



[Go to Product page](#)

Datasheet for ABIN1682671  
**anti-SF3A3 antibody (AA 292-501)**

8 Images

Overview

Quantity:	100 µg
Target:	SF3A3
Binding Specificity:	AA 292-501
Reactivity:	Human
Host:	Rabbit
Clonality:	Polyclonal
Conjugate:	This SF3A3 antibody is un-conjugated
Application:	Western Blotting (WB), Immunohistochemistry (IHC), Immunofluorescence (IF)

Product Details

Immunogen:	Recombinant fusion protein containing a sequence corresponding to amino acids 292-501 of human SF3A3 (NP_006793.1).
Sequence:	SLESLDTSLF AKNPKSKGTK RDTERNKDIA FLEAQIYEYV EILGEQRHLT HENVQRKQAR TGEEREEEEEQISESESED EENEIYNPK NLPLGWDGKP IPYWLYKLHG LNINYNCEIC GNYTYRGPKA FQRHFAEWRH AHGMRCLGIP NTAHFANVTQ IEDAVSLWAK LKLQKASERW QPDTEEEYED SSGNVVNKKT YEDLKRQGLL
Isotype:	IgG
Cross-Reactivity:	Human, Mouse, Rat
Characteristics:	Polyclonal Antibodies

## Target Details

---

Target:	SF3A3
Alternative Name:	SF3A3 ( <a href="#">SF3A3 Products</a> )
Background:	This gene encodes subunit 3 of the splicing factor 3a protein complex. The splicing factor 3a heterotrimer includes subunits 1, 2 and 3 and is necessary for the in vitro conversion of 15S U2 snRNP into an active 17S particle that performs pre-mRNA splicing. Subunit 3 interacts with subunit 1 through its amino-terminus while the zinc finger domain of subunit 3 plays a role in its binding to the 15S U2 snRNP. This gene has a pseudogene on chromosome 20. Alternative splicing results in multiple transcript variants.,SF3A3,PRP9,PRPF9,SAP61,SF3a60,Epigenetics & Nuclear Signaling,RNA Binding,SF3A3
Molecular Weight:	58 kDa
Gene ID:	10946
UniProt:	<a href="#">Q12874</a>
Pathways:	<a href="#">Ribonucleoprotein Complex Subunit Organization</a>

## Application Details

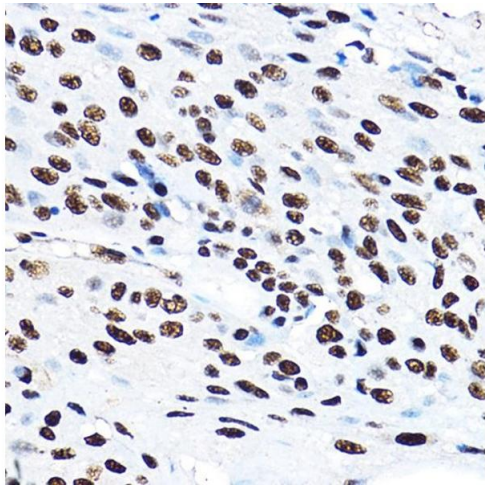
---

Application Notes:	WB,1:200 - 1:2000,IHC,1:50 - 1:200,IF,1:50 - 1:200
Restrictions:	For Research Use only

## Handling

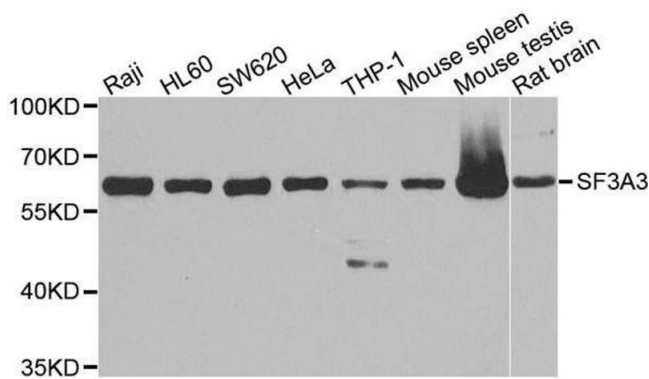
---

Buffer:	PBS with 0.02 % sodium azide,50 % glycerol, pH 7.3.
Preservative:	Sodium azide
Precaution of Use:	This product contains Sodium azide: a POISONOUS AND HAZARDOUS SUBSTANCE which should be handled by trained staff only.
Storage:	-20 °C
Storage Comment:	Store at -20°C. Avoid freeze / thaw cycles.



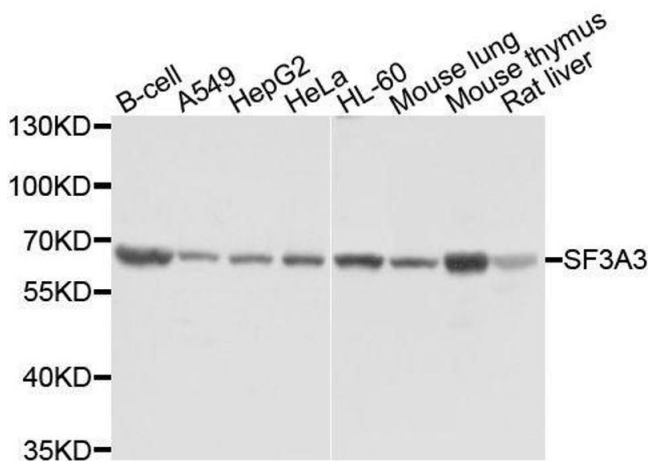
### Immunohistochemistry

**Image 1.** Immunohistochemistry of paraffin-embedded human esophageal cancer using SF3 Rabbit pAb (ABIN1682671, ABIN3018959, ABIN3018960 and ABIN6220644) at dilution of 1:100 (40x lens). Perform high pressure antigen retrieval with 10 mM citrate buffer pH 6.0 before commencing with IHC staining protocol.



### Western Blotting

**Image 2.** Western blot analysis of extracts of various cell lines, using SF3A3 antibody.



### Western Blotting

**Image 3.** Western blot analysis of extracts of various cell lines, using SF3A3 antibody.

Please check the [product details page](#) for more images. Overall 8 images are available for ABIN1682671.