

Datasheet for ABIN1682677  
**anti-SRSF2 antibody (AA 1-75)**[Go to Product page](#)

## 4 Images

## Overview

Quantity:	100 µg
Target:	SRSF2
Binding Specificity:	AA 1-75
Reactivity:	Human
Host:	Rabbit
Clonality:	Polyclonal
Conjugate:	This SRSF2 antibody is un-conjugated
Application:	Western Blotting (WB), Immunohistochemistry (IHC)

## Product Details

Immunogen:	Recombinant fusion protein containing a sequence corresponding to amino acids 1-75 of human SRSF2 (NP_003007.2).
Sequence:	MSYGRPPPDV EGMTSLKVDN LTYRTSPDTL RRVFEKYGRV GDVYIPDRDY TKESRGFAFV RFHDKRDAED AMDAM
Isotype:	IgG
Cross-Reactivity:	Human, Mouse, Rat
Characteristics:	Polyclonal Antibodies
Purification:	Affinity purification

## Target Details

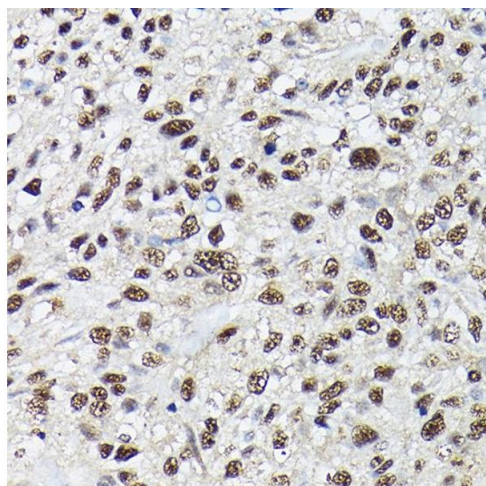
Target:	SRSF2
Alternative Name:	SRSF2 ( <a href="#">SRSF2 Products</a> )
Background:	The protein encoded by this gene is a member of the serine/arginine (SR)-rich family of pre-mRNA splicing factors, which constitute part of the spliceosome. Each of these factors contains an RNA recognition motif (RRM) for binding RNA and an RS domain for binding other proteins. The RS domain is rich in serine and arginine residues and facilitates interaction between different SR splicing factors. In addition to being critical for mRNA splicing, the SR proteins have also been shown to be involved in mRNA export from the nucleus and in translation. Two transcript variants encoding the same protein and one non-coding transcript variant have been found for this gene. In addition, a pseudogene of this gene has been found on chromosome 11.,SRSF2,PR264,SC-35,SC35,SFRS2,SFRS2A,SRp30b,Epigenetics & Nuclear Signaling,SRSF2
Molecular Weight:	24 kDa/25 kDa
Gene ID:	6427
UniProt:	<a href="#">Q01130</a>

## Application Details

Application Notes:	WB,1:500 - 1:2000,IHC,1:50 - 1:200
Restrictions:	For Research Use only

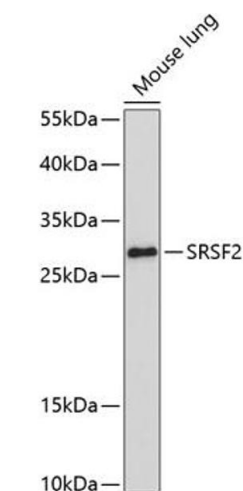
## Handling

Buffer:	PBS with 0.02 % sodium azide,50 % glycerol, pH 7.3.
Preservative:	Sodium azide
Precaution of Use:	This product contains Sodium azide: a POISONOUS AND HAZARDOUS SUBSTANCE which should be handled by trained staff only.
Storage:	-20 °C
Storage Comment:	Store at -20°C. Avoid freeze / thaw cycles.



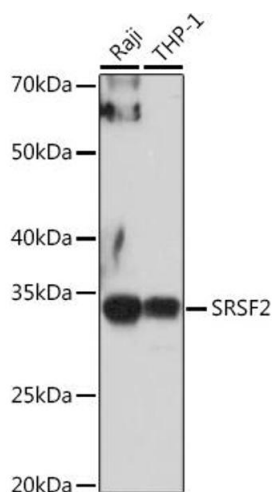
### Immunohistochemistry

**Image 1.** Immunohistochemistry of paraffin-embedded Human lung using SRSF2 antibody (ABIN1682677, ABIN3017915, ABIN3017916, ABIN5664377 and ABIN6220303) at dilution of 1:100 (40x lens). Perform high pressure antigen retrieval with 10 mM citrate buffer pH 6.0 before commencing with IHC staining protocol.



### Western Blotting

**Image 2.** Western blot analysis of extracts of mouse lung, using SRSF2 antibody (ABIN1682677, ABIN3017915, ABIN3017916, ABIN5664377 and ABIN6220303) at 1:1000 dilution. Secondary antibody: HRP Goat Anti-Rabbit IgG (H+L) (ABIN1684268 and ABIN3020597) at 1:10000 dilution. Lysates/proteins: 25 µg per lane. Blocking buffer: 3 % nonfat dry milk in TBST. Detection: ECL Enhanced Kit (RM00021). Exposure time: 90s.



### Western Blotting

**Image 3.** Western blot analysis of extracts of various cell lines, using SRSF2 antibody (ABIN1682677, ABIN3017915, ABIN3017916, ABIN5664377 and ABIN6220303) at 1:1000 dilution. Secondary antibody: HRP Goat Anti-Rabbit IgG (H+L) (ABIN1684268 and ABIN3020597) at 1:10000 dilution. Lysates/proteins: 25 µg per lane. Blocking buffer: 3 % nonfat dry milk in TBST. Detection: ECL Basic Kit (RM00020). Exposure time: 10s.

Please check the [product details page](#) for more images. Overall 4 images are available for ABIN1682677.