

Datasheet for ABIN1682693

**anti-PLAP antibody**

3 Images

[Go to Product page](#)

## Overview

Quantity:	100 µg
Target:	PLAP (ALPP)
Reactivity:	Human
Host:	Rabbit
Clonality:	Monoclonal
Application:	Western Blotting (WB), Immunohistochemistry (IHC)

## Product Details

Immunogen:	A synthesized peptide derived from human Placental alkaline phosphatase (PLAP)
Isotype:	IgG
Cross-Reactivity:	Human, Mouse, Rat
Characteristics:	Monoclonal Antibodies
Purification:	Affinity purification

## Target Details

Target:	PLAP (ALPP)
Alternative Name:	ALPP ( <a href="#">ALPP Products</a> )
Background:	The protein encoded by this gene is an alkaline phosphatase, a metalloenzyme that catalyzes the hydrolysis of phosphoric acid monoesters. It belongs to a multigene family composed of four alkaline phosphatase isoenzymes. The enzyme functions as a homodimer and has a catalytic site containing one magnesium and two zinc ions, which are required for its enzymatic

## Target Details

function. The protein is primarily expressed in placental and endometrial tissue, however, strong ectopic expression has been detected in ovarian adenocarcinoma, serous cystadenocarcinoma, and other ovarian cancer cells. [provided by RefSeq, Jan 2015],ALP, PALP, PLAP, PLAP-1,Stem Cells,ALPP

Molecular Weight: 70 kDa

Gene ID: 250

UniProt: [P05187](#)

## Application Details

Application Notes: WB,1:500 - 1:2000,IHC,1:50 - 1:200

Restrictions: For Research Use only

## Handling

Buffer: PBS with 0.02 % sodium azide,0.05 % BSA,50 % glycerol, pH 7.3.

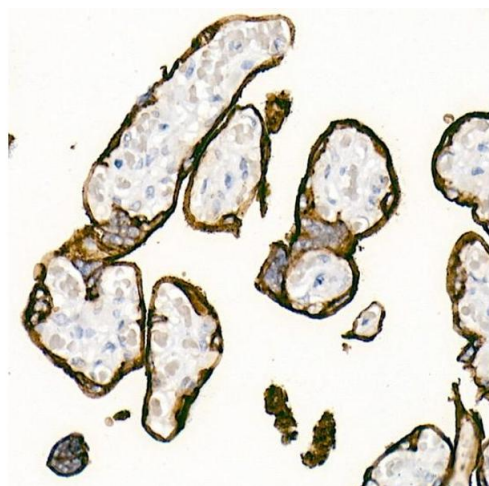
Preservative: Sodium azide

Precaution of Use: This product contains Sodium azide: a POISONOUS AND HAZARDOUS SUBSTANCE which should be handled by trained staff only.

Storage: -20 °C

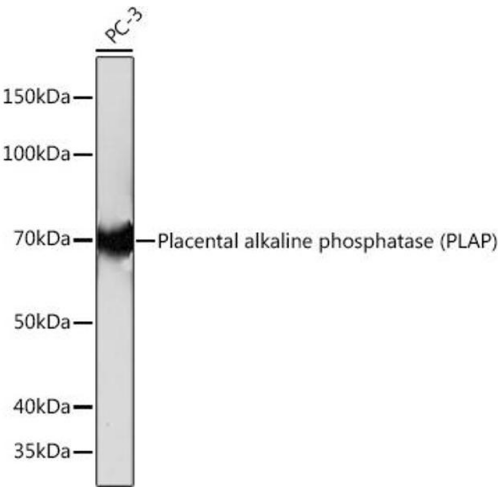
Storage Comment: Store at -20°C. Avoid freeze / thaw cycles.

## Images



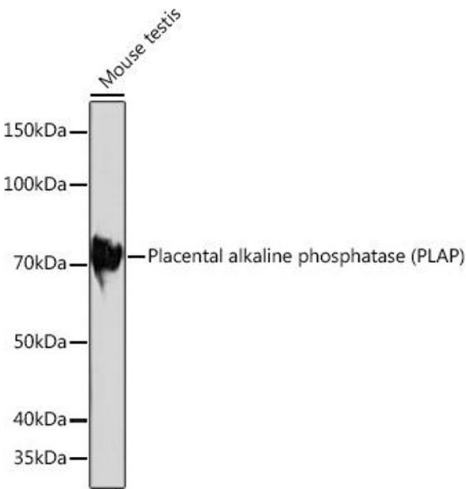
### Immunohistochemistry

**Image 1.** Immunohistochemistry of paraffin-embedded Human placenta using Placental alkaline phosphatase (PLAP) antibody (ABIN1682693, ABIN7101664, ABIN7101665 and ABIN7101666) at dilution of 1:1000 (40x lens). Perform high pressure antigen retrieval with 10 mM Tris/EDTA buffer pH 9.0 before commencing with IHC staining protocol.



#### Western Blotting

**Image 2.** Western blot analysis of extracts of PC-3 cells, using Placental alkaline phosphatase (PLAP) Rabbit mAb (ABIN1682693, ABIN7101664, ABIN7101665 and ABIN7101666) at 1:1000 dilution. Secondary antibody: HRP Goat Anti-Rabbit IgG (H+L) (ABIN1684268 and ABIN3020597) at 1:10000 dilution. Lysates/proteins: 25 µg per lane. Blocking buffer: 3 % nonfat dry milk in TBST. Detection: ECL Basic Kit (RM00020). Exposure time: 10s.



#### Western Blotting

**Image 3.** Western blot analysis of extracts of Mouse testis, using Placental alkaline phosphatase (PLAP) Rabbit mAb (ABIN1682693, ABIN7101664, ABIN7101665 and ABIN7101666) at 1:1000 dilution. Secondary antibody: HRP Goat Anti-Rabbit IgG (H+L) (ABIN1684268 and ABIN3020597) at 1:10000 dilution. Lysates/proteins: 25 µg per lane. Blocking buffer: 3 % nonfat dry milk in TBST. Detection: ECL Basic Kit (RM00020). Exposure time: 3 min.