

Datasheet for ABIN1682734
anti-SLC16A2/MCT8 antibody (AA 1-100)



[Go to Product page](#)

2 Images

Overview

Quantity:	100 µg
Target:	SLC16A2/MCT8 (SLC16A2)
Binding Specificity:	AA 1-100
Reactivity:	Human
Host:	Rabbit
Clonality:	Polyclonal
Application:	Western Blotting (WB)

Product Details

Immunogen:	Recombinant fusion protein containing a sequence corresponding to amino acids 1-100 of human SLC16A2 (NP_006508.2).
Sequence:	MALQSQASEE AKGPWQEQADQ EQQEPVGSPE PESEPEPEPE PEPVPVPPPE PQPEPQPLPD PAPLPELEFE SERVHEPEPT PTVETRGTAR GFQPPEGGFG
Isotype:	IgG
Cross-Reactivity:	Human, Mouse, Rat
Characteristics:	Polyclonal Antibodies

Target Details

Target:	SLC16A2/MCT8 (SLC16A2)
Alternative Name:	SLC16A2 (SLC16A2 Products)

Target Details

Background: This gene encodes an integral membrane protein that functions as a transporter of thyroid hormone. The encoded protein facilitates the cellular importation of thyroxine (T4), triiodothyronine (T3), reverse triiodothyronine (rT3) and diiodothyronine (T2). This gene is expressed in many tissues and likely plays an important role in the development of the central nervous system. Loss of function mutations in this gene are associated with psychomotor retardation in males while females exhibit no neurological defects and more moderate thyroid-deficient phenotypes. This gene is subject to X-chromosome inactivation. Mutations in this gene are the cause of Allan-Herndon-Dudley syndrome.,SLC16A2,AHDS,DXS128,DXS128E,MCT 7,MCT 8,MCT7,MCT8,MRX22,XPCT,Signal Transduction,Cell Biology & Developmental Biology,Growth factor,Endocrine & Metabolism,Neuroscience,SLC16A2

Molecular Weight: 59 kDa

Gene ID: 6567

UniProt: [P36021](#)

Pathways: [Hormone Transport](#)

Application Details

Application Notes: WB,1:500 - 1:2000

Restrictions: For Research Use only

Handling

Buffer: PBS with 0.02 % sodium azide,50 % glycerol, pH 7.3.

Preservative: Sodium azide

Precaution of Use: This product contains Sodium azide: a POISONOUS AND HAZARDOUS SUBSTANCE which should be handled by trained staff only.

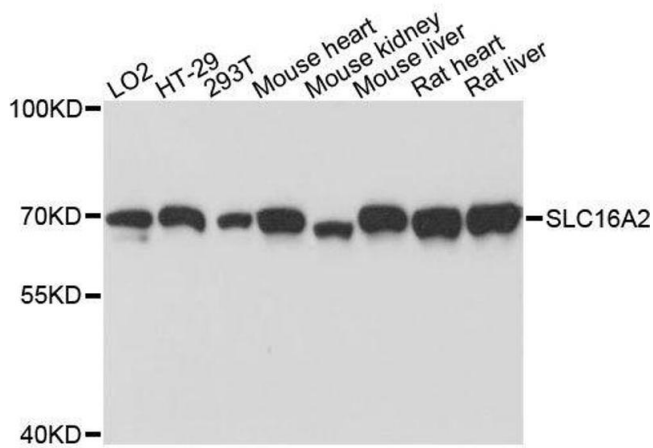
Storage: -20 °C

Storage Comment: Store at -20°C. Avoid freeze / thaw cycles.



Western Blotting

Image 1. Western blot analysis of extracts of various cell lines, using SLC16A2 antibody.



Western Blotting

Image 2. Western blot analysis of extracts of various cell lines, using SLC16A2 antibody.