



Datasheet for ABIN1682808
anti-SMAD5 antibody (AA 140-240)



[Go to Product page](#)

5 Images

Overview

Quantity:	100 µg
Target:	SMAD5
Binding Specificity:	AA 140-240
Reactivity:	Human
Host:	Rabbit
Clonality:	Polyclonal
Conjugate:	This SMAD5 antibody is un-conjugated
Application:	Western Blotting (WB), Immunohistochemistry (IHC)

Product Details

Immunogen:	A synthetic peptide corresponding to a sequence within amino acids 140-240 of human Smad5 (NP_005894.3).
Sequence:	LVPRHNEFNP QHSLLVQFRN LSHNEPHMPQ NATFPDSFHQ PNNTPFPLSP NSPYPPSPAS STYPNSPASS GPGSPFQLPA DTPPPAYMPP DDQMGQDNSQ P
Isotype:	IgG
Cross-Reactivity:	Human, Mouse, Rat
Characteristics:	Polyclonal Antibodies

Target Details

Target:	SMAD5
---------	-------

Target Details

Alternative Name: Smad5 ([SMAD5 Products](#))

Background: The protein encoded by this gene is involved in the transforming growth factor beta signaling pathway that results in an inhibition of the proliferation of hematopoietic progenitor cells. The encoded protein is activated by bone morphogenetic proteins type 1 receptor kinase, and may be involved in cancer. Alternative splicing results in multiple transcript variants.,DWFC,JV5-1,MADH5,SMAD5,Epigenetics & Nuclear Signaling,Signal Transduction,Cell Biology & Developmental Biology,TGF-b-Smad Signaling Pathway,ESC Pluripotency and Differentiation,Stem Cells,SMADs,Smad5

Molecular Weight: 52 kDa

Gene ID: 4090

UniProt: [Q99717](#)

Application Details

Application Notes: WB,1:500 - 1:2000,IHC,1:50 - 1:100

Restrictions: For Research Use only

Handling

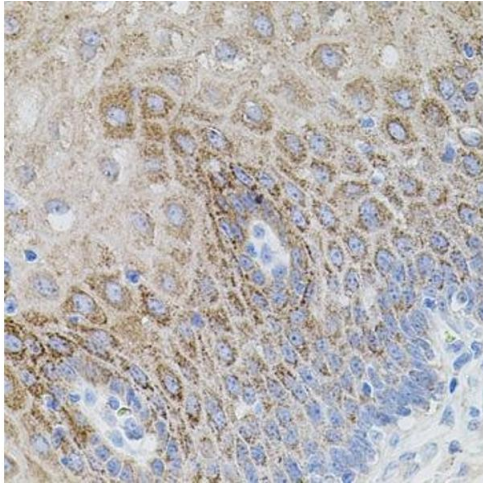
Buffer: PBS with 0.02 % sodium azide,50 % glycerol, pH 7.3.

Preservative: Sodium azide

Precaution of Use: This product contains Sodium azide: a POISONOUS AND HAZARDOUS SUBSTANCE which should be handled by trained staff only.

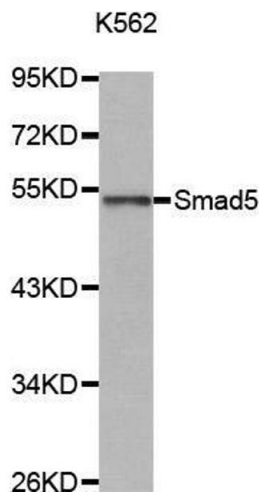
Storage: -20 °C

Storage Comment: Store at -20°C. Avoid freeze / thaw cycles.



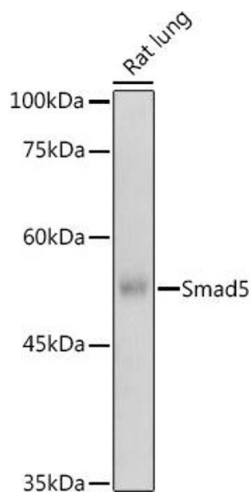
Immunohistochemistry

Image 1. Immunohistochemistry of paraffin-embedded human esophagus using SM antibody (ABIN1682808, ABIN5663732, ABIN5663734 and ABIN6213914) (40x lens). Perform microwave antigen retrieval with 10 mM PBS buffer pH 7.2 before commencing with IHC staining protocol.



Western Blotting

Image 2.



Western Blotting

Image 3. Western blot analysis of extracts of Rat lung, using Smad5 antibody (ABIN1682808, ABIN5663732, ABIN5663734 and ABIN6213914) at 1:500 dilution. Secondary antibody: HRP Goat Anti-Rabbit IgG (H+L) (ABIN1684268 and ABIN3020597) at 1:10000 dilution. Lysates/proteins: 25 µg per lane. Blocking buffer: 3 % nonfat dry milk in TBST. Detection: ECL Basic Kit (RM00020). Exposure time: 1s.

Please check the [product details page](#) for more images. Overall 5 images are available for ABIN1682808.