



[Go to Product page](#)

Datasheet for ABIN1682835  
**anti-SMYD4 antibody (AA 1-260)**

3 Images

Overview

Quantity:	100 µg
Target:	SMYD4
Binding Specificity:	AA 1-260
Reactivity:	Human
Host:	Rabbit
Clonality:	Polyclonal
Conjugate:	This SMYD4 antibody is un-conjugated
Application:	Western Blotting (WB), Immunofluorescence (IF), Immunoprecipitation (IP)

Product Details

Immunogen:	Recombinant fusion protein containing a sequence corresponding to amino acids 1-260 of human SMYD4 (NP_443160.2).
Sequence:	MDLPVDEWKS YLLQKWASLP TSVQVTISTA ETLRDIFLHS SLLQPEDEL FLKRLSKGYL VGKSDAPLF YREEGNKKFQ EKDYTGAAVL YSKGVSHSRP NTEMLSLCHA NRSAALFHLG QYETCLKDIN RAQTHGYPER LQPKIMLRKA ECLVALGRLQ EASQTISDLE RNFTATPALA DVLPTLQRN LHRLKMKMQE KDSLTFSPA ALAKTLEDA LRENEQLSN ASSIGLCVD PLKGRCLVAT KDILPGELLV
Isotype:	IgG
Cross-Reactivity:	Human, Mouse
Characteristics:	Polyclonal Antibodies

## Target Details

---

Target: SMYD4

Alternative Name: SMYD4 ([SMYD4 Products](#))

Background: Plays a critical role in cardiac development. Acts as a key epigenetic regulator of gene expression during cardiac development via its dual activities as a methyltransferase and negative regulator of HDAC1 (By similarity.,SMYD4,ZMYND21,Epigenetics & Nuclear Signaling,Cancer,Tumor suppressors,SMYD4

Molecular Weight: 89 kDa

Gene ID: 114826

UniProt: [Q8IYR2](#)

## Application Details

---

Application Notes: WB,1:500 - 1:2000,IF,1:50 - 1:200,IP,1:20 - 1:50

Restrictions: For Research Use only

## Handling

---

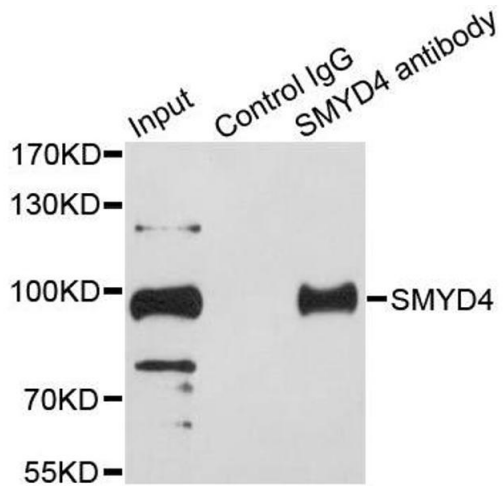
Buffer: PBS with 0.02 % sodium azide,50 % glycerol, pH 7.3.

Preservative: Sodium azide

Precaution of Use: This product contains Sodium azide: a POISONOUS AND HAZARDOUS SUBSTANCE which should be handled by trained staff only.

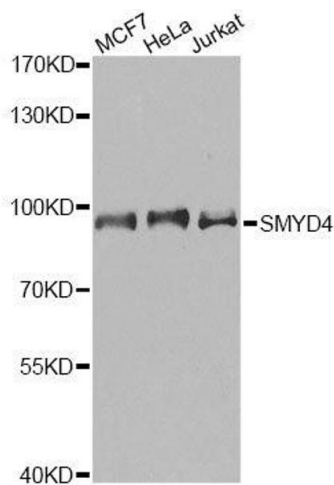
Storage: -20 °C

Storage Comment: Store at -20°C. Avoid freeze / thaw cycles.



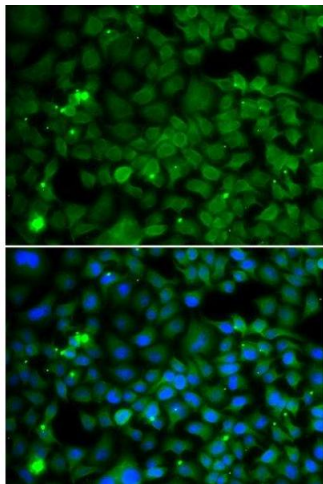
### Immunoprecipitation

**Image 1.** Immunoprecipitation analysis of 200ug extracts of HeLa cells using 1ug SMYD4 antibody.



### Western Blotting

**Image 2.** Western blot analysis of extracts of various cell lines, using SMYD4 antibody.



### Immunofluorescence

**Image 3.** Immunofluorescence analysis of MCF-7 cells using SMYD4 antibody.