



[Go to Product page](#)

Datasheet for ABIN1682903  
**anti-STAM antibody (AA 120-210)**

1 Image

### Overview

Quantity:	100 µg
Target:	STAM
Binding Specificity:	AA 120-210
Reactivity:	Human
Host:	Rabbit
Clonality:	Polyclonal
Conjugate:	This STAM antibody is un-conjugated
Application:	Western Blotting (WB), Immunohistochemistry (IHC)

### Product Details

Immunogen:	Recombinant fusion protein containing a sequence corresponding to amino acids 120-210 of human STAM (NP_003464.1).
Sequence:	KNDPQLSLIS AMIKNLKEQG VTFPAIGSQA AEQAKASPAL VAKDPGTVAN KKEEEDLAKA IELSLKEQRQ QSTTLSTLYP STSSLLTNHQ H
Isotype:	IgG
Cross-Reactivity:	Human, Mouse, Rat
Characteristics:	Polyclonal Antibodies

### Target Details

Target:	STAM
---------	------

## Target Details

---

Alternative Name:	STAM ( <a href="#">STAM Products</a> )
Background:	This gene encodes a member of the signal-transducing adaptor molecule family. These proteins mediate downstream signaling of cytokine receptors and also play a role in ER to Golgi trafficking by interacting with the coat protein II complex. The encoded protein also associates with hepatocyte growth factor-regulated substrate to form the endosomal sorting complex required for transport-0 (ESCRT-0), which sorts ubiquitinated membrane proteins to the ESCRT-1 complex for lysosomal degradation. Alternatively spliced transcript variants have been observed for this gene.,STAM,STAM-1,STAM1,Signal Transduction,Cell Biology & Developmental Biology,Cell Cycle,Cell differentiation,STAM
Molecular Weight:	44 kDa/59 kDa
Gene ID:	8027
UniProt:	<a href="#">Q92783</a>
Pathways:	<a href="#">EGFR Signaling Pathway</a> , <a href="#">EGFR Downregulation</a>

## Application Details

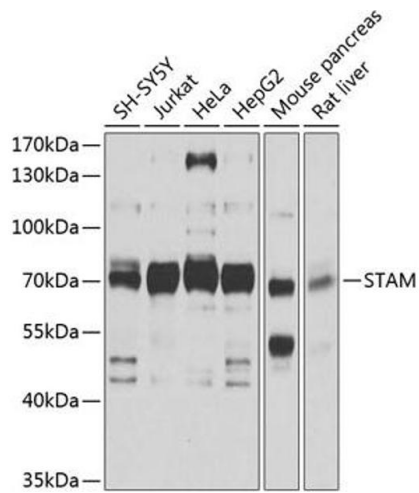
---

Application Notes:	WB,1:200 - 1:1000,IHC,1:20 - 1:100
Restrictions:	For Research Use only

## Handling

---

Buffer:	PBS with 0.02 % sodium azide,50 % glycerol, pH 7.3.
Preservative:	Sodium azide
Precaution of Use:	This product contains Sodium azide: a POISONOUS AND HAZARDOUS SUBSTANCE which should be handled by trained staff only.
Storage:	-20 °C
Storage Comment:	Store at -20°C. Avoid freeze / thaw cycles.



### Western Blotting

**Image 1.** Western blot analysis of extracts of various cell lines, using STAM antibody (ABIN1682903, ABIN3018681, ABIN3018682 and ABIN6220539) at 1:1000 dilution. Secondary antibody: HRP Goat Anti-Rabbit IgG (H+L) (ABIN1684268 and ABIN3020597) at 1:10000 dilution. Lysates/proteins: 25 µg per lane. Blocking buffer: 3 % nonfat dry milk in TBST. Detection: ECL Basic Kit (RM00020). Exposure time: 15s.