

Datasheet for ABIN1682917
anti-STAU1/Staufen antibody (AA 426-577)[Go to Product page](#)

2 Images

Overview

Quantity:	100 µg
Target:	STAU1/Staufen (STAU1)
Binding Specificity:	AA 426-577
Reactivity:	Human
Host:	Rabbit
Clonality:	Polyclonal
Conjugate:	This STAU1/Staufen antibody is un-conjugated
Application:	Western Blotting (WB), Immunohistochemistry (IHC)

Product Details

Immunogen:	Recombinant fusion protein containing a sequence corresponding to amino acids 426-577 of human Staufen (NP_059347.2).
Sequence:	QAVGVSQGHH TKDFTRAAPN PAKATVTAMI ARELLYGGTS PTAETILKNN ISSGHVPHGP LTRPSEQLDY LSRVQGFQVE YKDFPKNNKN EFVSLINCSS QPPLISHGIG KDVESCHDMA ALNILKLLSE LDQQSTEMPR TGNGPMSVCG RC
Isotype:	IgG
Cross-Reactivity:	Human, Mouse, Rat
Characteristics:	Polyclonal Antibodies

Target Details

Target:	STAU1/Staufen (STAU1)
---------	-----------------------

Target Details

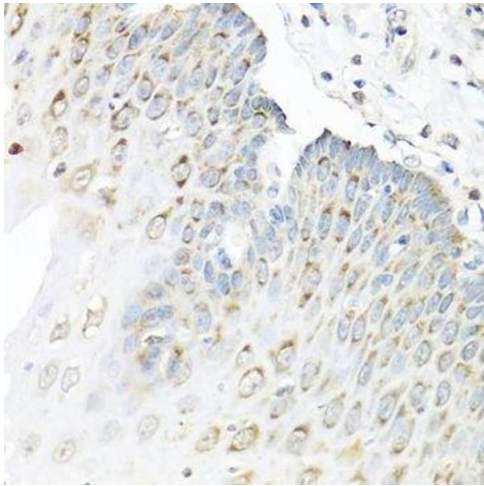
Alternative Name:	STAU1 (STAU1 Products)
Background:	<p>Staufen is a member of the family of double-stranded RNA (dsRNA)-binding proteins involved in the transport and/or localization of mRNAs to different subcellular compartments and/or organelles. These proteins are characterized by the presence of multiple dsRNA-binding domains which are required to bind RNAs having double-stranded secondary structures. The human homologue of staufen encoded by STAU, in addition contains a microtubule-binding domain similar to that of microtubule-associated protein 1B, and binds tubulin. The STAU gene product has been shown to be present in the cytoplasm in association with the rough endoplasmic reticulum (RER), implicating this protein in the transport of mRNA via the microtubule network to the RER, the site of translation. Five transcript variants resulting from alternative splicing of STAU gene and encoding three isoforms have been described. Three of these variants encode the same isoform, however, differ in their</p> <p>5'UTR.,STAU1,PPP1R150,STAU,Signal Transduction,Cell Biology & Developmental Biology,Cytoskeleton,Microtubules,Neuroscience,STAU1</p>
Molecular Weight:	54 kDa/55 kDa/63 kDa
Gene ID:	6780
UniProt:	O95793
Pathways:	Asymmetric Protein Localization

Application Details

Application Notes:	WB,1:500 - 1:2000,IHC,1:50 - 1:100
Restrictions:	For Research Use only

Handling

Buffer:	PBS with 0.02 % sodium azide,50 % glycerol, pH 7.3.
Preservative:	Sodium azide
Precaution of Use:	This product contains Sodium azide: a POISONOUS AND HAZARDOUS SUBSTANCE which should be handled by trained staff only.
Storage:	-20 °C
Storage Comment:	Store at -20°C. Avoid freeze / thaw cycles.



Immunohistochemistry (Paraffin-embedded Sections)

Image 1. Immunohistochemistry of paraffin-embedded human esophagus using STAU1 antibody.

Western Blotting

Image 2. Western blot analysis of extracts of various cell lines, using STAU1 antibody.

