

Datasheet for ABIN1682918
anti-Double-stranded RNA-binding protein Staufen homolog 2 (STAU2) (AA 300-400) antibody



[Go to Product page](#)

3 Images

Overview

Quantity:	100 µg
Target:	Double-stranded RNA-binding protein Staufen homolog 2 (STAU2)
Binding Specificity:	AA 300-400
Reactivity:	Human
Host:	Rabbit
Clonality:	Polyclonal
Application:	Western Blotting (WB), Immunofluorescence (IF)

Product Details

Immunogen:	A synthetic peptide corresponding to a sequence within amino acids 300-400 of human STAU2 (NP_001157852.1).
Sequence:	PEYGQGMNPI SRLAIQQAK KEKEPDYVLL SERGMPPRRRE FVMQVKVGNE VATGTGPNKK IAKKNAAEAM LLQLGYKAST NLQDQLEKTG ENKGWSGPKP G
Isotype:	IgG
Cross-Reactivity:	Human, Mouse, Rat
Characteristics:	Polyclonal Antibodies

Target Details

Target:	Double-stranded RNA-binding protein Staufen homolog 2 (STAU2)
Alternative Name:	STAU2 (STAU2 Products)

Target Details

Background: Staufen homolog 2 is a member of the family of double-stranded RNA (dsRNA)-binding proteins involved in the transport and/or localization of mRNAs to different subcellular compartments and/or organelles. These proteins are characterized by the presence of multiple dsRNA-binding domains which are required to bind RNAs having double-stranded secondary structures. Staufen homolog 2 shares 48.5 % and 59.9 % similarity with drosophila and human staufen, respectively. The exact function of Staufen homolog 2 is not known, but since it contains 3 copies of conserved dsRNA binding domain, it could be involved in double-stranded RNA binding events. Several transcript variants encoding different isoforms have been found for this gene.,STAU2,39K2,39K3,Epigenetics & Nuclear Signaling,RNA Binding,Cell Biology & Developmental Biology,Cell Adhesion,Microtubules,Neuroscience,STAU2

Molecular Weight: 11 kDa/34 kDa/43 kDa/52 kDa/55 kDa/59 kDa/62 kDa

Gene ID: 27067

UniProt: [Q9NUL3](#)

Application Details

Application Notes: WB,1:500 - 1:2000,IF,1:50 - 1:200

Restrictions: For Research Use only

Handling

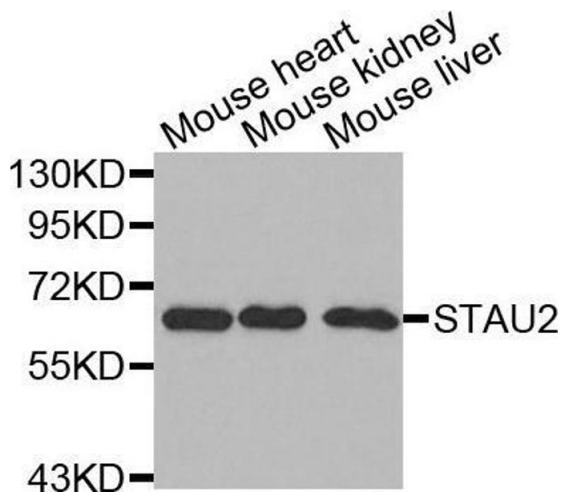
Buffer: PBS with 0.02 % sodium azide,50 % glycerol, pH 7.3.

Preservative: Sodium azide

Precaution of Use: This product contains Sodium azide: a POISONOUS AND HAZARDOUS SUBSTANCE which should be handled by trained staff only.

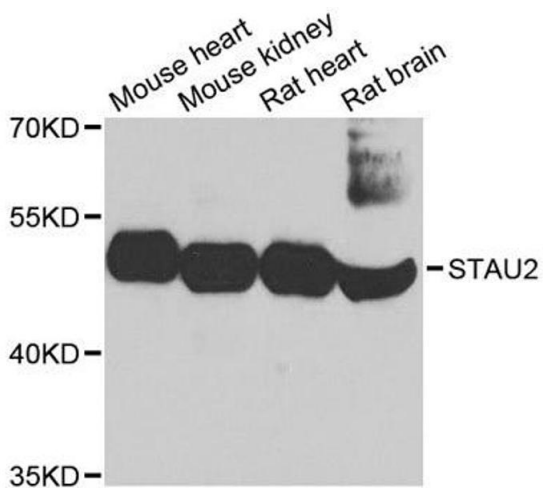
Storage: -20 °C

Storage Comment: Store at -20°C. Avoid freeze / thaw cycles.



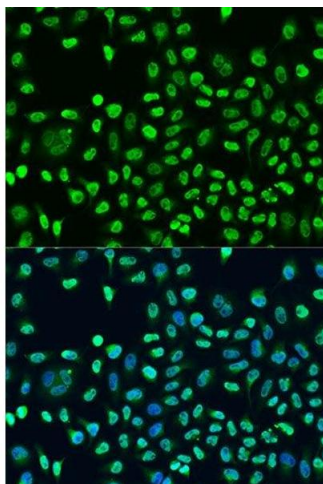
Western Blotting

Image 1. Western blot analysis of extracts of various cell lines, using STAU2 antibody.



Western Blotting

Image 2. Western blot analysis of extracts of various cell lines, using STAU2 antibody.



Immunofluorescence

Image 3. Immunofluorescence analysis of U2OS cells using STAU2 antibody.