

Datasheet for ABIN1682978
anti-TCF12 antibody (AA 443-682)



[Go to Product page](#)

1 Image

Overview

Quantity:	100 µg
Target:	TCF12
Binding Specificity:	AA 443-682
Reactivity:	Human
Host:	Rabbit
Clonality:	Polyclonal
Conjugate:	This TCF12 antibody is un-conjugated
Application:	Western Blotting (WB)

Product Details

Immunogen:	Recombinant fusion protein containing a sequence corresponding to amino acids 443-682 of human TCF12 (NP_003196.1).
Sequence:	PIGSLNSNYG GSSLVASSRS ASMVGTHRED SVSLNGNHSV LSSTVTTSSST DLNHKTQENY RGGLQSQSGT VVTEIKTEN KEKDENLHEP PSSDDMKSDS ESSQKDIKVS SRGRTSSSTNE DEDLNPEQKI EREKERRMAN NARERLRVRD INEAFKELGR MCQLHLKSEK PQTKLLILHQ AVAVILSLEQ QVRERNLNPK AACLRKREEE KSAVSAEPP TTLPGTHPGL SETTNPMGHM
Isotype:	IgG
Cross-Reactivity:	Human, Mouse, Rat
Characteristics:	Polyclonal Antibodies

Target Details

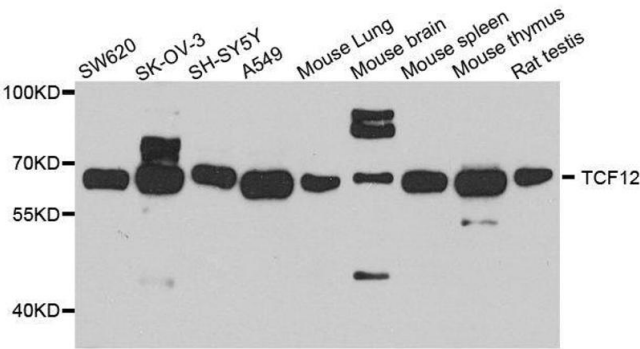
Target:	TCF12
Alternative Name:	TCF12 (TCF12 Products)
Background:	<p>The protein encoded by this gene is a member of the basic helix-loop-helix (bHLH) E-protein family that recognizes the consensus binding site (E-box) CANNTG. This encoded protein is expressed in many tissues, among them skeletal muscle, thymus, B- and T-cells, and may participate in regulating lineage-specific gene expression through the formation of heterodimers with other bHLH E-proteins. Several alternatively spliced transcript variants of this gene have been described, but the full-length nature of some of these variants has not been determined.,TCF12,CRS3,HEB,HTF4,HsT17266,TCF-12,bHLHb20,Epigenetics & Nuclear Signaling,Transcription Factors,TCF12</p>
Molecular Weight:	48 kDa/55 kDa/72 kDa/75 kDa
Gene ID:	6938
UniProt:	Q99081
Pathways:	SARS-CoV-2 Protein Interactome

Application Details

Application Notes:	WB,1:200 - 1:1000
Restrictions:	For Research Use only

Handling

Buffer:	PBS with 0.02 % sodium azide,50 % glycerol, pH 7.3.
Preservative:	Sodium azide
Precaution of Use:	This product contains Sodium azide: a POISONOUS AND HAZARDOUS SUBSTANCE which should be handled by trained staff only.
Storage:	-20 °C
Storage Comment:	Store at -20°C. Avoid freeze / thaw cycles.



Western Blotting

Image 1. Western blot analysis of extracts of various cell lines, using TCF12 antibody.