

Datasheet for ABIN1683015
anti-TGFB2 antibody (AA 20-160)

2 Images

[Go to Product page](#)

Overview

Quantity:	100 µg
Target:	TGFB2
Binding Specificity:	AA 20-160
Reactivity:	Human
Host:	Rabbit
Clonality:	Polyclonal
Conjugate:	This TGFB2 antibody is un-conjugated
Application:	Western Blotting (WB)

Product Details

Immunogen:	Recombinant fusion protein containing a sequence corresponding to amino acids 20-160 of human TGFB2 (NP_001129071.1).
Sequence:	SLSTCSTLDM DQFMRKRIEA IRGQILSKLK LTSPPEDYPE PEEVPPEVIS IYNSTRDLLQ EKASRRAAAC ERERSDEEYY AKEVYKIDMP PFFPSETVCP VVTTPSGSVG SLCSRQSQVL CGYLD AIPPT FYRPFYRIVR F
Isotype:	IgG
Cross-Reactivity:	Human, Mouse, Rat
Characteristics:	Polyclonal Antibodies

Target Details

Target:	TGFB2
---------	-------

Target Details

Alternative Name:	TGFB2 (TGFB2 Products)
Background:	<p>This gene encodes a member of the transforming growth factor beta (TGFB) family of cytokines, which are multifunctional peptides that regulate proliferation, differentiation, adhesion, migration, and other functions in many cell types by transducing their signal through combinations of transmembrane type I and type II receptors (TGFB1 and TGFB2) and their downstream effectors, the SMAD proteins. Disruption of the TGFB/SMAD pathway has been implicated in a variety of human cancers. The encoded protein is secreted and has suppressive effects of interleukin-2 dependent T-cell growth. Translocation t(1,7)(q41,p21) between this gene and HDAC9 is associated with Peters' anomaly, a congenital defect of the anterior chamber of the eye. The knockout mice lacking this gene show perinatal mortality and a wide range of developmental, including cardiac, defects. Alternatively spliced transcript variants encoding different isoforms have been identified.,TGFB2,G-TSF,LDS4,TGF-beta2,Cancer,Invasion and Metastasis,Signal Transduction,Cell Biology & Developmental Biology,Apoptosis,Growth factor,TGF-b-Smad Signaling Pathway,Wnt/β-Catenin Signaling Pathway,Endocrine & Metabolism,Stem Cells,Cardiovascular,Angiogenesis,Angiogenic growth factors,Ligand,TGFB2</p>
Molecular Weight:	47 kDa/50 kDa
Gene ID:	7042
UniProt:	P61812
Pathways:	Cell-Cell Junction Organization , Production of Molecular Mediator of Immune Response , Protein targeting to Nucleus

Application Details

Application Notes:	WB,1:200 - 1:2000
Restrictions:	For Research Use only

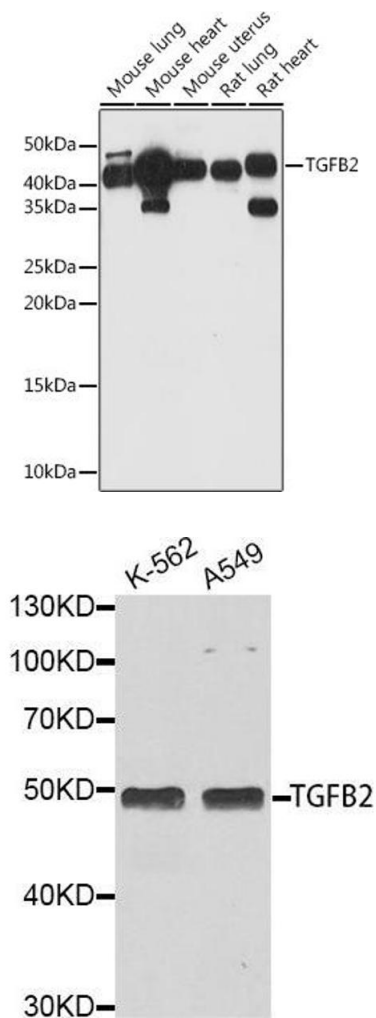
Handling

Buffer:	PBS with 0.02 % sodium azide,50 % glycerol, pH 7.3.
Preservative:	Sodium azide
Precaution of Use:	This product contains Sodium azide: a POISONOUS AND HAZARDOUS SUBSTANCE which should be handled by trained staff only.
Storage:	-20 °C

Handling

Storage Comment: Store at -20°C. Avoid freeze / thaw cycles.

Images



Western Blotting

Image 1. Western blot analysis of extracts of various cell lines, using TGFB2 antibody (ABIN1683015, ABIN3017925, ABIN3017926 and ABIN6220307) at 1:1000 dilution. Secondary antibody: HRP Goat Anti-Rabbit IgG (H+L) (ABIN1684268 and ABIN3020597) at 1:10000 dilution. Lysates/proteins: 25 µg per lane. Blocking buffer: 3 % nonfat dry milk in TBST. Detection: ECL Basic Kit (RM00020). Exposure time: 90s.

Western Blotting

Image 2. Western blot analysis of extracts of various cell lines, using TGFB2 antibody.