

Datasheet for ABIN1683037  
**anti-KAP1 antibody (AA 576-835)**



[Go to Product page](#)

8 Images

1 Publication

## Overview

Quantity:	100 µg
Target:	KAP1 (TRIM28)
Binding Specificity:	AA 576-835
Reactivity:	Human
Host:	Rabbit
Clonality:	Polyclonal
Conjugate:	This KAP1 antibody is un-conjugated
Application:	Western Blotting (WB), Immunohistochemistry (IHC), Immunofluorescence (IF), Immunoprecipitation (IP)

## Product Details

Immunogen:	Recombinant fusion protein containing a sequence corresponding to amino acids 576-835 of human KAP1/KAP1/TRIM28 (NP_005753.1).
Sequence:	PVLMALAE GP GAEGPRLASP SGSTSSGLE V VAPEGTSAPG GPGTLDDSA TICRVCQKPG DLVMCNQCEF CFHLDCHLPA LQDVPGE EWS CSLCHVLPDL KEEDGSLSLD GADSTGVVAK LSPANQRKCE RVLLALFCHE PCRPLHQLAT DSTFSLDQPG GTLDLTLIRA RLQEKLSPPY SSPQEFAQDV GRMFKQFNKL TEDKADVQSI IGLQRFFETR MNEAFGDTKF SAVLVEPPPM SLPGAGLSSQ ELSSGGPGDGP
Isotype:	IgG
Cross-Reactivity:	Human, Mouse, Rat
Characteristics:	Polyclonal Antibodies

## Product Details

---

Purification: Affinity purification

## Target Details

---

Target: KAP1 (TRIM28)

Alternative Name: TRIM28 ([TRIM28 Products](#))

Background: The protein encoded by this gene mediates transcriptional control by interaction with the Kruppel-associated box repression domain found in many transcription factors. The protein localizes to the nucleus and is thought to associate with specific chromatin regions. The protein is a member of the tripartite motif family. This tripartite motif includes three zinc-binding domains, a RING, a B-box type 1 and a B-box type 2, and a coiled-coil region.,KAP1,PPP1R157,RNF96,TF1B,TIF1B,TRIM28,Epigenetics & Nuclear Signaling,Transcription Factors,Cancer,Invasion and Metastasis,Cell Biology & Developmental Biology,Apoptosis,Ubiquitin,TRIM28

Molecular Weight: 79 kDa/88 kDa

Gene ID: 10155

UniProt: [Q13263](#)

Pathways: [Hedgehog Signaling](#), [Positive Regulation of Response to DNA Damage Stimulus](#)

## Application Details

---

Application Notes: WB,1:1000 - 1:3000,IHC,1:100 - 1:200,IF,1:50 - 1:200,IP,1:50 - 1:200

Restrictions: For Research Use only

## Handling

---

Buffer: PBS with 0.02 % sodium azide,50 % glycerol, pH 7.3.

Preservative: Sodium azide

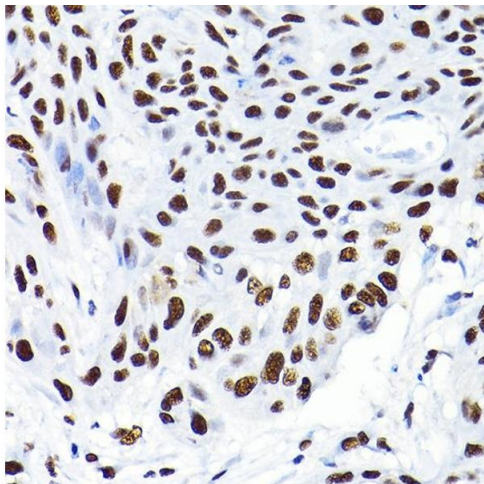
Precaution of Use: This product contains Sodium azide: a POISONOUS AND HAZARDOUS SUBSTANCE which should be handled by trained staff only.

Storage: -20 °C

Storage Comment: Store at -20°C. Avoid freeze / thaw cycles.

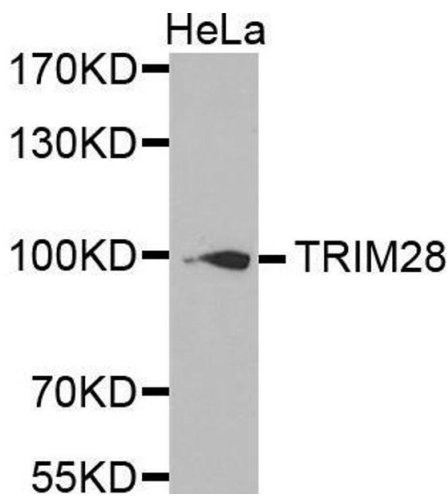
Product cited in: Han, Cai, Gao, Meng, Gao, Wu, Duan, Wang, Dinislam, Lin, Kang, Jiang: "Loss of ATRX suppresses ATM dependent DNA damage repair by modulating H3K9me3 to enhance temozolomide sensitivity in glioma." in: **Cancer letters**, Vol. 419, pp. 280-290, (2019) ([PubMed](#)).

Images



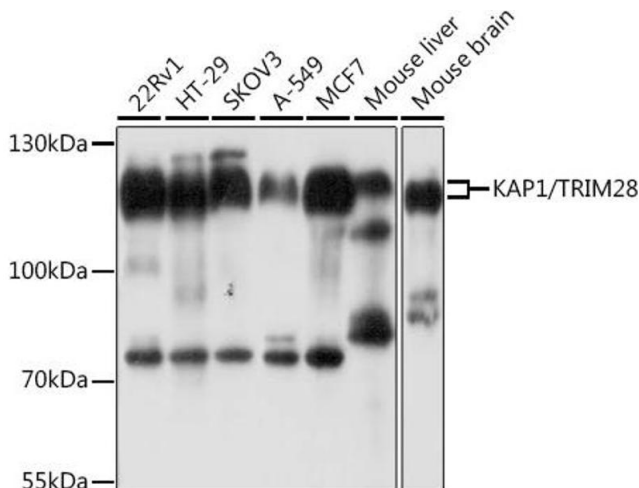
**Immunohistochemistry**

**Image 1.** Immunohistochemistry of paraffin-embedded human esophageal cancer using K/K/TRIM28 Rabbit pAb at dilution of 1:200 (40x lens). Perform high pressure antigen retrieval with 10 mM citrate buffer pH 6.0 before commencing with IHC staining protocol.



**Western Blotting**

**Image 2.**



**Western Blotting**

**Image 3.** Western blot analysis of extracts of various cell lines, using K/K/TRIM28 antibody at 1:1000 dilution. Secondary antibody: HRP Goat Anti-Rabbit IgG (H+L) (ABIN1684268 and ABIN3020597) at 1:10000 dilution. Lysates/proteins: 25 µg per lane. Blocking buffer: 3 % nonfat dry milk in TBST. Detection: ECL Basic Kit (RM00020). Exposure time: 5s.

## Images

---

Please check the [product details page](#) for more images. Overall 8 images are available for ABIN1683037.