

Datasheet for ABIN1683115 anti-TPSAB1 antibody (AA 19-210)



[Go to Product page](#)

4 Images

Overview

Quantity:	100 µg
Target:	TPSAB1
Binding Specificity:	AA 19-210
Reactivity:	Human
Host:	Rabbit
Clonality:	Polyclonal
Conjugate:	This TPSAB1 antibody is un-conjugated
Application:	Western Blotting (WB)

Product Details

Immunogen:	Recombinant fusion protein containing a sequence corresponding to amino acids 19-210 of human TPSAB1 (NP_003285.2).
Sequence:	APAPGQALQR VGIVGGQEAP RSKWPWQVSL RVHGPYWMHF CGGSLIHPQW VLTAACHCVGP DVKDLAALRV QLREQHLYYQ DQLLPVSRII VHPQFYTAQI GADIALLELE EPNVNSSHVH TVTLPPASET FPPGMPCWVT GWGDVDNDR LPPPFPLKQV KVPIMENHIC DAKYHLGAYT GDDVRIVRDD ML
Isotype:	IgG
Cross-Reactivity:	Human, Mouse, Rat
Characteristics:	Polyclonal Antibodies

Target Details

Target:	TPSAB1
Alternative Name:	TPSAB1 (TPSAB1 Products)
Background:	<p>Tryptases comprise a family of trypsin-like serine proteases, the peptidase family S1. Tryptases are enzymatically active only as heparin-stabilized tetramers, and they are resistant to all known endogenous proteinase inhibitors. Several tryptase genes are clustered on chromosome 16p13.3. These genes are characterized by several distinct features. They have a highly conserved 3' UTR and contain tandem repeat sequences at the 5' flank and 3' UTR which are thought to play a role in regulation of the mRNA stability. These genes have an intron immediately upstream of the initiator Met codon, which separates the site of transcription initiation from protein coding sequence. This feature is characteristic of tryptases but is unusual in other genes. The alleles of this gene exhibit an unusual amount of sequence variation, such that the alleles were once thought to represent two separate genes, alpha and beta 1. Beta tryptases appear to be the main isoenzymes expressed in mast cells, whereas in basophils, alpha tryptases predominate. Tryptases have been implicated as mediators in the pathogenesis of asthma and other allergic and inflammatory disorders.,TPSAB1,TPS1,TPS2,TPSB1,Signal Transduction,Endocrine & Metabolism,Amino acid metabolism,Immunology & Inflammation,Cell Intrinsic Innate Immunity Signaling Pathway,TPSAB1</p>
Molecular Weight:	29 kDa/30 kDa
Gene ID:	7177
UniProt:	Q15661

Application Details

Application Notes:	WB,1:500 - 1:2000
Restrictions:	For Research Use only

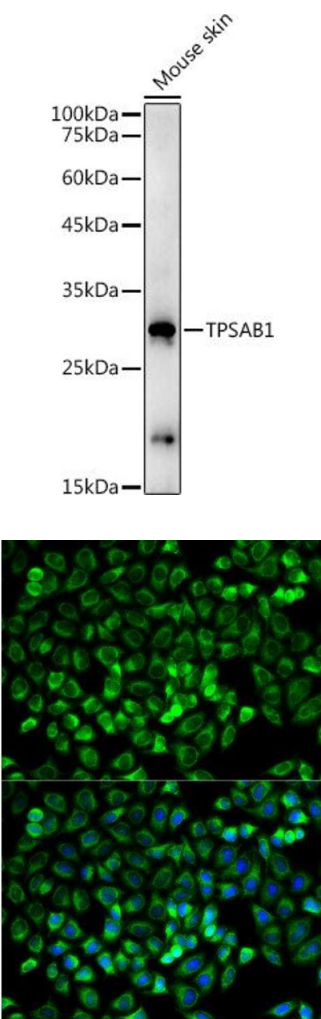
Handling

Buffer:	PBS with 0.02 % sodium azide,50 % glycerol, pH 7.3.
Preservative:	Sodium azide
Precaution of Use:	This product contains Sodium azide: a POISONOUS AND HAZARDOUS SUBSTANCE which should be handled by trained staff only.
Storage:	-20 °C

Handling

Storage Comment: Store at -20°C. Avoid freeze / thaw cycles.

Images



Western Blotting

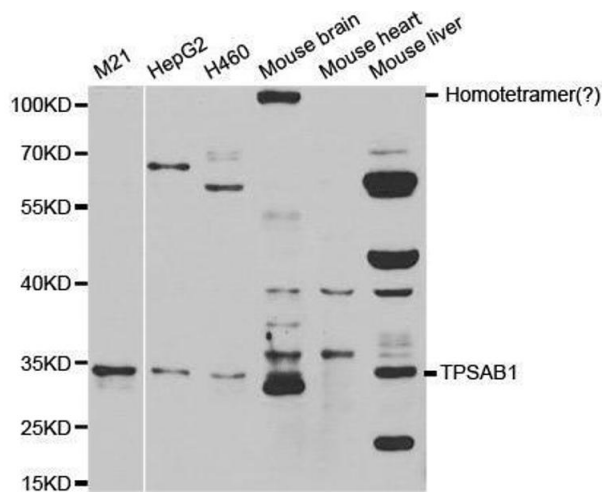
Image 1. Western blot analysis of extracts of Mouse skin, using TPS antibody (ABIN3015852, ABIN3015853, ABIN1683115 and ABIN6219192) at 1:1000 dilution. Secondary antibody: HRP Goat Anti-Rabbit IgG (H+L) (ABIN1684268 and ABIN3020597) at 1:10000 dilution. Lysates/proteins: 25 µg per lane. Blocking buffer: 3 % nonfat dry milk in TBST. Detection: ECL Enhanced Kit (RM00021). Exposure time: 180s.

Immunofluorescence

Image 2. Immunofluorescence analysis of HeLa cell using TPSAB1 antibody. Blue: DAPI for nuclear staining.

Western Blotting

Image 3. Western blot analysis of extracts of various cell lines, using TPSAB1 antibody.



Please check the [product details page](#) for more images. Overall 4 images are available for ABIN1683115.