



[Go to Product page](#)

Datasheet for ABIN1683178
anti-TUBGCP3 antibody (AA 1-250)

3 Images

Overview

Quantity:	100 µg
Target:	TUBGCP3
Binding Specificity:	AA 1-250
Reactivity:	Human
Host:	Rabbit
Clonality:	Polyclonal
Conjugate:	This TUBGCP3 antibody is un-conjugated
Application:	Western Blotting (WB)

Product Details

Immunogen:	Recombinant fusion protein containing a sequence corresponding to amino acids 1-250 of human TUBGCP3 (NP_001273207.1).
Sequence:	MATPDQKSPN VLLQNLCCRI LGRSEADVAQ QFQYAVRVIG SNFAPTVERD EFLVAEKIKK ELIRQRREAD AALFSELHRK LHSQGV LKNK WSILYLLLSL SEDPRRQPSK VSSYATLFAQ ALPRDAHSTP YYYARPQ TLP LSYQDRSAQS AQSSGSVGS SGISSIGLCAL SGPAPAPQSL LPGQSNQAPG VGDCLRQLG SRLAWTLTAN QPSSQATT SK GVPSAVSRNM TRSRREGDTG GTMEITEAAL
Isotype:	IgG
Cross-Reactivity:	Human, Mouse, Rat
Characteristics:	Polyclonal Antibodies

Target Details

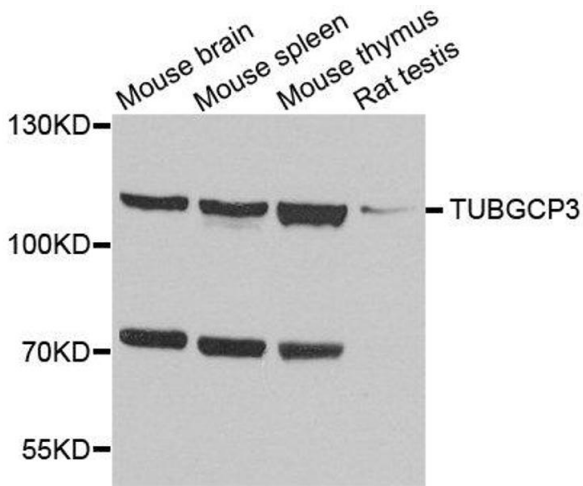
Target:	TUBGCP3
Alternative Name:	TUBGCP3 (TUBGCP3 Products)
Background:	Gamma-tubulin complex is necessary for microtubule nucleation at the centrosome.,TUBGCP3,104p,GCP3,Grip104,SPBC98,Spc98,Spc98p,Signal Transduction,Cell Biology & Developmental Biology,Cell Cycle,Centrosome,Cytoskeleton,Microtubules,Immunology & Inflammation,CD markers,TUBGCP3
Molecular Weight:	48 kDa/93 kDa/103 kDa
Gene ID:	10426
UniProt:	Q96CW5
Pathways:	M Phase , SARS-CoV-2 Protein Interactome

Application Details

Application Notes:	WB,1:500 - 1:2000
Restrictions:	For Research Use only

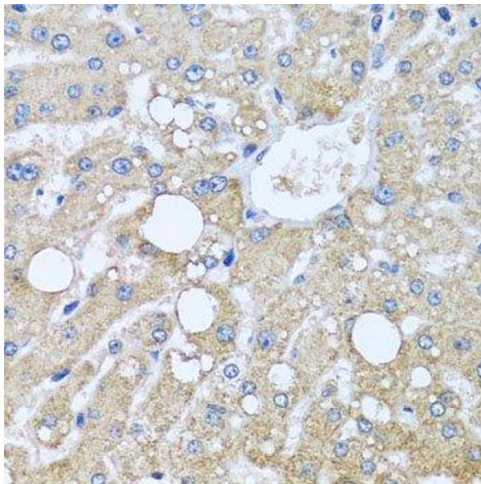
Handling

Buffer:	PBS with 0.02 % sodium azide,50 % glycerol, pH 7.3.
Preservative:	Sodium azide
Precaution of Use:	This product contains Sodium azide: a POISONOUS AND HAZARDOUS SUBSTANCE which should be handled by trained staff only.
Storage:	-20 °C
Storage Comment:	Store at -20°C. Avoid freeze / thaw cycles.



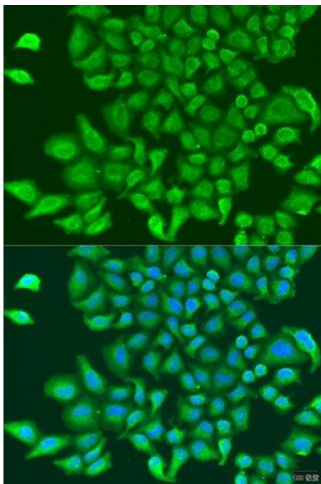
Western Blotting

Image 1. Western blot analysis of extracts of various cell lines, using TUBGCP3 antibody.



Immunohistochemistry (Paraffin-embedded Sections)

Image 2. Immunohistochemistry of paraffin-embedded human liver injury using TUBGCP3 antibody.



Immunofluorescence

Image 3. Immunofluorescence analysis of U2OS cells using TUBGCP3 antibody.