



Datasheet for ABIN1683196
anti-UBE2L3 antibody (AA 73-212)



[Go to Product page](#)

6 Images

Overview

Quantity:	100 µg
Target:	UBE2L3
Binding Specificity:	AA 73-212
Reactivity:	Human
Host:	Rabbit
Clonality:	Polyclonal
Conjugate:	This UBE2L3 antibody is un-conjugated
Application:	Western Blotting (WB), Immunohistochemistry (IHC), Immunofluorescence (IF)

Product Details

Immunogen:	Recombinant fusion protein containing a sequence corresponding to amino acids 73-212 of human UBE2L3 (NP_001243284.1).
Sequence:	RKCGMKNFRN IQVDEANLLT WQGLIVDPNP PYDKGAFRIE INFPAEYPFK PPKITFKTKI YHPNIDEKGQ VCLPVISAEN WKPATKTDQV IQSLIALVND PQPEHPLRAD LAEEYSKDRK KFCKNAEEFT KKYGEKRPVD
Isotype:	IgG
Cross-Reactivity:	Human, Mouse, Rat
Characteristics:	Polyclonal Antibodies

Target Details

Target:	UBE2L3
---------	--------

Target Details

Alternative Name: UBE2L3 ([UBE2L3 Products](#))

Background: The modification of proteins with ubiquitin is an important cellular mechanism for targeting abnormal or short-lived proteins for degradation. Ubiquitination involves at least three classes of enzymes: ubiquitin-activating enzymes (E1s), ubiquitin-conjugating enzymes (E2s) and ubiquitin-protein ligases (E3s). This gene encodes a member of the E2 ubiquitin-conjugating enzyme family. This enzyme is demonstrated to participate in the ubiquitination of p53, c-Fos, and the NF- κ B precursor p105 in vitro. Several alternatively spliced transcript variants have been found for this gene.,UBE2L3,E2-F1,L-UBC,UBCH7,UbcM4,Epigenetics & Nuclear Signaling,RNA Binding,Cell Biology & Developmental Biology,Ubiquitin,Ubiquitin-Proteasome Signaling Pathway,Neuroscience,Neurodegenerative Diseases,UBE2L3

Molecular Weight: 14 kDa/17 kDa/24 kDa

Gene ID: 7332

UniProt: [P68036](#)

Application Details

Application Notes: WB,1:1000 - 1:2000,IHC,1:50 - 1:100,IF,1:50 - 1:200

Restrictions: For Research Use only

Handling

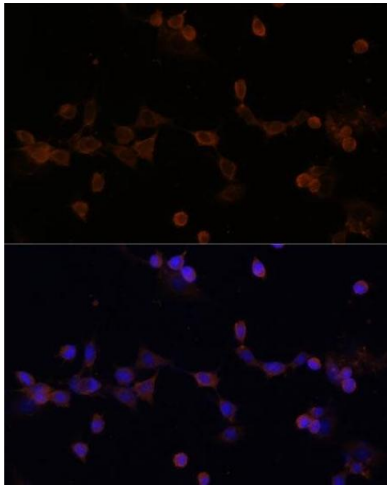
Buffer: PBS with 0.02 % sodium azide,50 % glycerol, pH 7.3.

Preservative: Sodium azide

Precaution of Use: This product contains Sodium azide: a POISONOUS AND HAZARDOUS SUBSTANCE which should be handled by trained staff only.

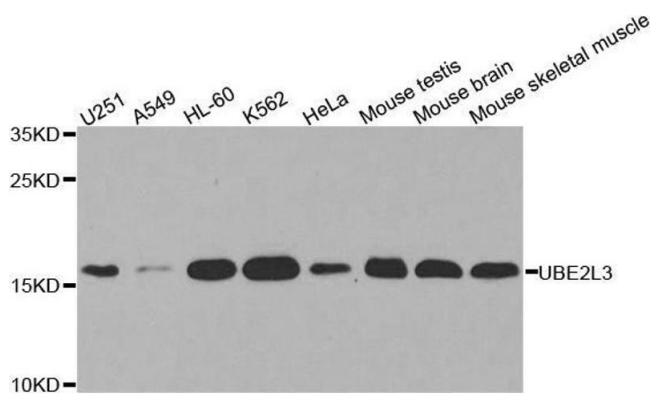
Storage: -20 °C

Storage Comment: Store at -20°C. Avoid freeze / thaw cycles.



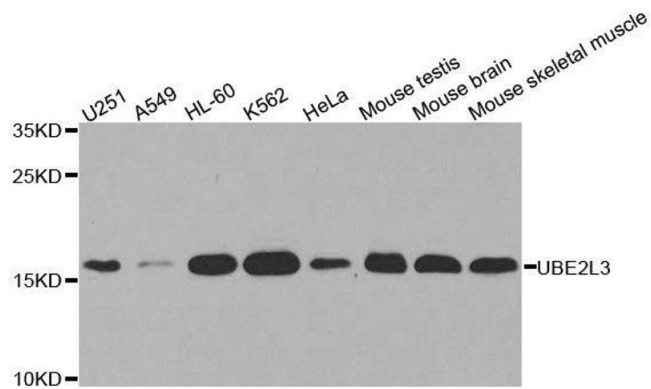
Immunofluorescence

Image 1. Immunofluorescence analysis of NIH-3T3 cells using UBE2L3 Polyclonal Antibody (ABIN1683196, ABIN3018653, ABIN3018655 and ABIN6220527) at dilution of 1:100 (40x lens). Blue: DAPI for nuclear staining.



Western Blotting

Image 2. Western blot analysis of extracts of various cell lines, using UBE2L3 antibody.



Western Blotting

Image 3. Western blot analysis of extracts of various cell lines, using UBE2L3 antibody.

Please check the [product details page](#) for more images. Overall 6 images are available for ABIN1683196.