

Datasheet for ABIN1683300
anti-XRCC1 antibody (AA 1-320)



[Go to Product page](#)

5 Images

Overview

Quantity:	100 µg
Target:	XRCC1
Binding Specificity:	AA 1-320
Reactivity:	Human
Host:	Rabbit
Clonality:	Polyclonal
Conjugate:	This XRCC1 antibody is un-conjugated
Application:	Western Blotting (WB), Immunohistochemistry (IHC), Immunofluorescence (IF)

Product Details

Immunogen:	Recombinant fusion protein containing a sequence corresponding to amino acids 1-320 of human XRCC1 (NP_006288.2).
Sequence:	MPEIRLRHVV SCSSQDSTHC AENLLKADTY RKWRAAKAGE KTISVVLQLE KEEQIHSVDI GNDGSAFVEV LVGSSAGGAG EQDYEVLLVT SSFMSPSES SRSGSNPNRVRM FGPDKLVRAA AEKRWDRVKI VCSQPYSKDS PFGLSFVRFH SPPDKDEAEA PSQKVTVTKL GQFRVKEEDE SANSLRPGAL FFSRINKTSP VTASDPAGPS YAAATLQASS AASSASPVSR AIGSTSKPQE SPKGGKRKLDL NQEEKKTPSK PPAQLSPSVP KRPKLPAPTR TPATAPV PAR AQQAVTGKPR GEGTEPRRPR AGPEELGKIL
Isotype:	IgG
Cross-Reactivity:	Human, Mouse, Rat
Characteristics:	Polyclonal Antibodies

Target Details

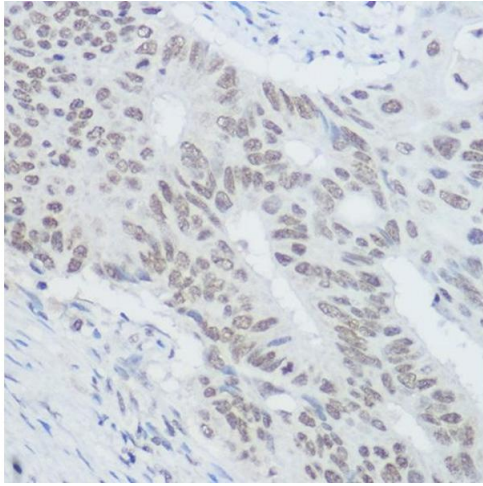
Target:	XRCC1
Alternative Name:	XRCC1 (XRCC1 Products)
Background:	The protein encoded by this gene is involved in the efficient repair of DNA single-strand breaks formed by exposure to ionizing radiation and alkylating agents. This protein interacts with DNA ligase III, polymerase beta and poly (ADP-ribose) polymerase to participate in the base excision repair pathway. It may play a role in DNA processing during meiosis and recombination in germ cells. A rare microsatellite polymorphism in this gene is associated with cancer in patients of varying radiosensitivity.,XRCC1,RCC,Epigenetics & Nuclear Signaling,DNA Damage & Repair,Cancer,Endocrine & Metabolism,Nucleotide metabolism,Purine and pyrimidine synthesis,XRCC1
Molecular Weight:	69 kDa
Gene ID:	7515
UniProt:	P18887
Pathways:	DNA Damage Repair

Application Details

Application Notes:	WB,1:1000 - 1:2000,IHC,1:50 - 1:200,IF,1:50 - 1:200
Restrictions:	For Research Use only

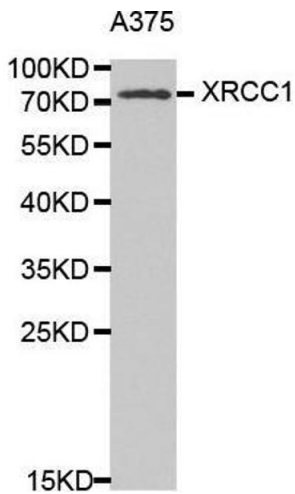
Handling

Buffer:	PBS with 0.02 % sodium azide,50 % glycerol, pH 7.3.
Preservative:	Sodium azide
Precaution of Use:	This product contains Sodium azide: a POISONOUS AND HAZARDOUS SUBSTANCE which should be handled by trained staff only.
Storage:	-20 °C
Storage Comment:	Store at -20°C. Avoid freeze / thaw cycles.



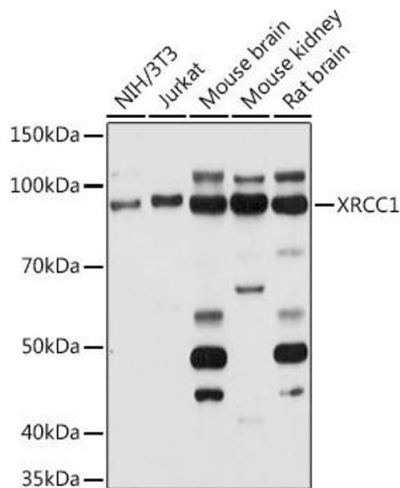
Immunohistochemistry

Image 1. Immunohistochemistry of paraffin-embedded human colon carcinoma using XRCC1 Rabbit pAb (ABIN1683300, ABIN5663662, ABIN5663663, ABIN5663664 and ABIN6213850) at dilution of 1:300 (40x lens). Perform high pressure antigen retrieval with 10 mM citrate buffer pH 6.0 before commencing with IHC staining protocol.



Western Blotting

Image 2.



Western Blotting

Image 3. Western blot analysis of extracts of various cell lines, using XRCC1 antibody (ABIN1683300, ABIN5663662, ABIN5663663, ABIN5663664 and ABIN6213850) at 1:1000 dilution. Secondary antibody: HRP Goat Anti-Rabbit IgG (H+L) (ABIN1684268 and ABIN3020597) at 1:10000 dilution. Lysates/proteins: 25 µg per lane. Blocking buffer: 3 % nonfat dry milk in TBST. Detection: ECL Basic Kit (RM00020). Exposure time: 10s.

Please check the [product details page](#) for more images. Overall 5 images are available for ABIN1683300.