

Datasheet for ABIN1686727  
**AHSA1 Protein (His tag)**



[Go to Product page](#)

1 Image

Overview

Quantity:	100 µg
Target:	AHSA1
Origin:	Human
Source:	Escherichia coli (E. coli)
Protein Type:	Recombinant
Purification tag / Conjugate:	This AHSA1 protein is labelled with His tag.
Application:	Western Blotting (WB), SDS-PAGE (SDS), Functional Studies (Func)

Product Details

Sequence:	SHMAKWGEGD PRWIVEERAD ATNVNNWHWT ERDASNWSTD KLKTLFLAVQ VQNEEGKCEV TEVSKLDGEA SINNRKGLI FFYEWSVKLN WTGTSKSGVQ YKGVHVEIPNL SDENSVDEVE ISVSLAKDEP DTNLVALMKE EGVKLLREAM GIYISTLKTE FTQGMILPTM NGESVDPVGQ PALKTEERKA KPAPSKTQAR PVGVKIPTCK ITLKETFLTS PEELYRVFTT QELVQAFTHA PATLEADRGK KFHMVDGNVS GEFTDLVPEK HIVMKWRFKS WPEGHFATIT LTFIDKNGET ELCMEGRGIP APEEERTRQG WQRYYFEGIK QTFGYGARLF
Specificity:	~38 kDa
Characteristics:	2 µM ABIN1686726 generated a 9-fold ATPase activation of 2 µM Hsp90 (His-tagged Hsp90 beta) in 33 mM Hepes pH 7.2, 30 mM NaCl, 5 mM MgCl <sub>2</sub> , 1 mM DTT, 1.5 mM ATP in a 100 µL reaction at 37 degrees C. (This is an enzyme-linked ATP regeneration assay tracking loss of NADH absorbance at 340nm.)
Purification:	Affinity Purified

## Product Details

---

Purity: >90%

## Target Details

---

Target: AHSA1

Alternative Name: Aha1 ([AHSA1 Products](#))

Background: Aha1 is a member of the HSP90 cochaperone family, and is thought to stimulate HSP90 ATPase activity by competing with p23 and other co-chaperones for HSP90 binding (1, 2). It may affect a step in the endoplasmic reticulum to Golgi trafficking. Aha1 also interacts with HSPCA/HSP90 and with the cytoplasmic tail of the vesicular stomatitis virus glycoproteins (VSV G) (3). Aha1 is expressed in numerous tissues, including the brain, heart, skeletal muscle, and kidney, and at low levels, the liver and placenta. Aha1 might be a potential therapeutic strategy to increase sensitivity to HSP inhibitors (4).

Molecular Weight: approx. 38 kDa

Gene ID: 10598

NCBI Accession: [NP\\_036243](#)

UniProt: [O95433](#)

## Application Details

---

Application Notes: Optimal working dilution should be determined by the investigator.

Comment: This product has been certified >90% pure using SDS PAGE analysis. 2uM ABIN1686726 generated a 9-fold ATPase activation of 2uM HSP90 (His-tagged HSP90 beta) in 33mM Hepes pH7.2, 30mM NaCl, 5mM MgCl<sub>2</sub>, 1mM DTT, 1.5mM ATP in a 100ul reaction at 37 degrees C. (This is an enzyme-linked ATP regeneration assay tracking loss of NADH absorbance at 340nm.)

Restrictions: For Research Use only

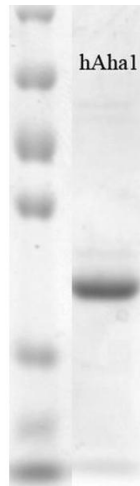
## Handling

---

Concentration: Lot specific

Buffer: 20 mM HEPES buffer pH 7.2, 80 mM NaCl, 10 % glycerol

Storage: -20 °C



### SDS-PAGE

**Image 1.** SDS PAGE of human his-tagged Aha1 protein (ABIN1686726, ABIN1686727 and ABIN1686728).