

Datasheet for ABIN1686736

HA2 Protein (His tag)[Go to Product page](#)**1** Image

Overview

Quantity:	100 µg
Target:	HA2
Origin:	Human
Source:	Escherichia coli (E. coli)
Protein Type:	Recombinant
Purification tag / Conjugate:	This HA2 protein is labelled with His tag.
Application:	SDS-PAGE (SDS), Western Blotting (WB)

Product Details

Specificity:	~38 kDa
Purification:	Affinity Purified
Purity:	>90%

Target Details

Target:	HA2
Alternative Name:	Aha2 (HA2 Products)
Background:	Aha2 shares 45 % sequence homology with Aha1, however, little is known about the functional protein. Aha1 is a member of the HSP90 cochaperone family, and is thought to stimulate HSP90 ATPase activity by competing with p23 and other co-chaperones for HSP90 binding (1, 2). It may affect a step in the endoplasmic reticulum to Golgi trafficking. Aha1 also interacts with HSPCA/HSP90 and with the cytoplasmic tail of the vesicular stomatitis virus

Target Details

glycoproteins (VSV G) (3). Aha1 is expressed in numerous tissues, including the brain, heart, skeletal muscle, and kidney, and at low levels, the liver and placenta. Aha1 might be a potential therapeutic strategy to increase sensitivity to HSP inhibitors (4).

Molecular Weight:	approx. 38 kDa
Gene ID:	130872
NCBI Accession:	NP_036243
UniProt:	Q71910
Pathways:	Cellular Glucan Metabolic Process , Proton Transport

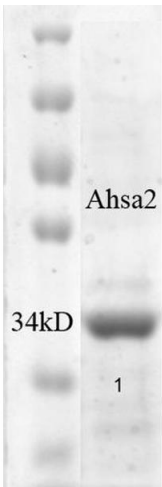
Application Details

Application Notes:	Optimal working dilution should be determined by the investigator.
Comment:	This product has been certified >90% pure using SDS - PAGE analysis.
Restrictions:	For Research Use only

Handling

Concentration:	Lot specific
Buffer:	100 mM NaH ₂ PO ₄ pH 4.5, 10 mM Tris buffer with 8M urea
Storage:	-20 °C

Images



SDS-PAGE

Image 1. SDS-PAGE of ~38 kDa his-tagged human Aha2 protein (ABIN1686735, ABIN1686736 and ABIN1686737).