



[Go to Product page](#)

Datasheet for ABIN1686782

anti-Cadherin 13 antibody (AA 285-297)

1 Image

Overview

| | |
|----------------------|--|
| Quantity: | 100 µg |
| Target: | Cadherin 13 (CDH13) |
| Binding Specificity: | AA 285-297 |
| Reactivity: | Human |
| Host: | Goat |
| Clonality: | Polyclonal |
| Conjugate: | This Cadherin 13 antibody is un-conjugated |
| Application: | Western Blotting (WB), ELISA |

Product Details

| | |
|-------------------|---|
| Purpose: | CDH13 / H cadherin (aa285-297) |
| Sequence: | NIRQQTPDKP SPN |
| Isotype: | IgG |
| Specificity: | This antibody is expected to recognize isoform 1, 2, 3 and 4 (NP_001248.1, NP_001207417.1, NP_001207418.1, NP_001207419.1). |
| Cross-Reactivity: | Cow, Dog, Human, Mouse, Rat |
| Purification: | Purified from goat serum by ammonium sulphate precipitation followed by antigen affinity chromatography using the immunizing peptide. |
| Grade: | Verified |

Target Details

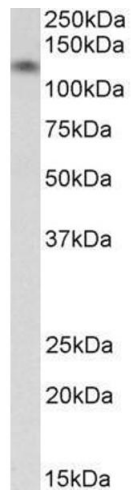
| | |
|-------------------|--|
| Target: | Cadherin 13 (CDH13) |
| Alternative Name: | CDH13 (CDH13 Products) |
| Background: | CDH13, cadherin 13, H-cadherin (heart), CDHH, P105, H-cadherin, T-cad, T-cadherin, cadherin-13, heart cadherin |
| Molecular Weight: | 125 kDa |
| Gene ID: | 1012, 12554, 192248 |
| NCBI Accession: | NP_001248 , NP_001207417 , NP_001207418 , NP_001207419 |
| Pathways: | EGFR Signaling Pathway , Cell-Cell Junction Organization |

Application Details

| | |
|--------------------|---|
| Application Notes: | Western Blot: Approx 125 kDa band observed in Human Heart lysates (calculated MW of 83.4 kDa according to NP_001207417.1). The observed molecular weight corresponds to earlier findings in literature with different antibodies (Zhong et al, Clin Cancer Res. Peptide ELISA: antibody detection limit dilution 1:128000. |
| Restrictions: | For Research Use only |

Handling

| | |
|--------------------|--|
| Format: | Liquid |
| Concentration: | 0.5 mg/mL |
| Buffer: | Supplied at 0.5 mg/mL in Tris saline, 0.02 % sodium azide, pH 7.3 with 0.5 % bovine serum albumin. |
| Preservative: | Sodium azide |
| Precaution of Use: | This product contains Sodium azide: a POISONOUS AND HAZARDOUS SUBSTANCE which should be handled by trained staff only. |
| Handling Advice: | Minimize freezing and thawing. |
| Storage: | -20 °C |
| Storage Comment: | Aliquot and store at -20°C, with minimal freeze/thawing. A working aliquot may be refrigerated at 4°C for a few weeks and still remain viable. |



Western Blotting

Image 1. ABIN1686782 (0.03 μ g/ml) staining of Human Heart lysate (35 μ g protein in RIPA buffer). Primary incubation was 1 hour. Detected by chemiluminescence.