

Datasheet for ABIN1686783
anti-CSTF2 antibody (Internal Region)

2 Images

[Go to Product page](#)

Overview

Quantity:	100 µg
Target:	CSTF2
Binding Specificity:	Internal Region
Reactivity:	Human, Mouse
Host:	Goat
Clonality:	Polyclonal
Conjugate:	This CSTF2 antibody is un-conjugated
Application:	ELISA, Immunohistochemistry (IHC), Immunoprecipitation (IP)

Product Details

Purpose:	betaCstF-64 variant 1/ betaCstF-64 variant 3 (mouse)
Sequence:	PASIERVQQG RT
Isotype:	IgG
Specificity:	This antibody recognizes mouse variants 1 and 3 of the reported beta isoform (ACF05702.1, ACF05700.1).
Cross-Reactivity:	Mouse
Purification:	Purified from goat serum by ammonium sulphate precipitation followed by antigen affinity chromatography using the immunizing peptide.
Grade:	Verified

Target Details

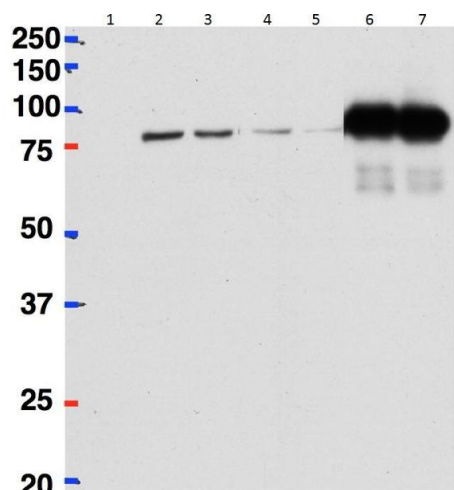
Target:	CSTF2
Alternative Name:	Cstf2 (CSTF2 Products)
Background:	Cstf2, cleavage stimulation factor, 3' pre-RNA subunit 2, 64 kDa, C630034J23Rik, Cstf64, CF-1 64 kDa subunit, CSTF 64 kDa subunit, alphaCstF-64 variant 4, betaCstF-64 variant 1, betaCstF-64 variant 3, cleavage stimulation factor 64 kDa subunit, cleavage st
Molecular Weight:	80 kDa,75 kDa
Gene ID:	108062

Application Details

Application Notes:	<p>Immunohistochemistry: Paraffin embedded Human Tonsil. Recommended concentration: 5 µg/mL.</p> <p>Western Blot: Immunoprecipitation: In transfected HeLa transiently expressing Mouse βCstf-64 ((DYKDDDDK tagged), a band of approx. 80 kDa was observed using anti-DYKDDDDK antibody in Western blot after immunoprecipitation with EB11838. No</p> <p>Peptide ELISA: antibody detection limit dilution 1:128000.</p>
Restrictions:	For Research Use only

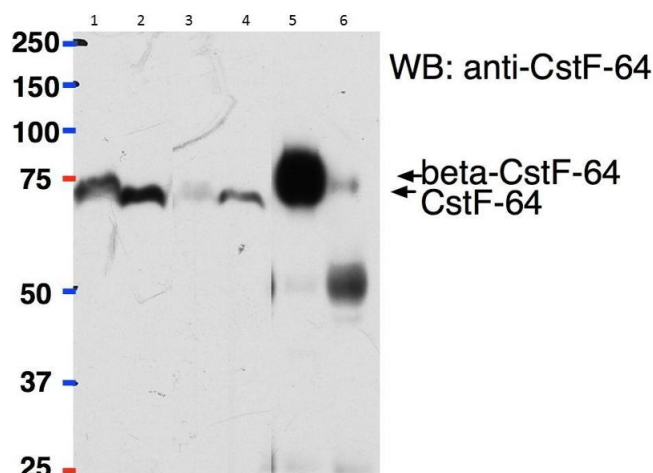
Handling

Format:	Liquid
Concentration:	0.5 mg/mL
Buffer:	Supplied at 0.5 mg/mL in Tris saline, 0.02 % sodium azide, pH 7.3 with 0.5 % bovine serum albumin.
Preservative:	Sodium azide
Precaution of Use:	This product contains Sodium azide: a POISONOUS AND HAZARDOUS SUBSTANCE which should be handled by trained staff only.
Handling Advice:	Minimize freezing and thawing.
Storage:	-20 °C
Storage Comment:	Aliquot and store at -20°C, with minimal freeze/thawing. A working aliquot may be refrigerated at 4°C for a few weeks and still remain viable.



Western Blotting

Image 1. HeLa lysate either in RIPA buffer (lanes 1, 2, 4, 6) or TX100 buffer (lanes 3, 5, 7) overexpressing Mouse CSTF2 (64 kDa) (DYKDDDDK tagged) immunoprecipitated using ABIN1686783 (2 µg) with Protein G-coated magnetic beads in lanes 6 and 7 and probed with anti-DYKDDDDK (1/1000). Mock-transfected HeLa in Lane 1. A 1/40th part of the lysate was loaded in lanes 2 and 3 before IP and in lanes 4 and 5 after IP. Primary incubations were for 1 hour. Detected by chemiluminescence. Data obtained from Dr P Grozdanov, Texas Tech University Health Sciences Center, USA.



Immunoprecipitation

Image 2. ABIN1686783 (2µg) used to pull down β Cstf-64 from Mouse Brain (lane 5) lysate (500ug protein) while it cannot pull down Cstf-64 from Mouse Liver (lane 6) lysate (500ug) protein) using Protein G-coated magnetic beads. A 1/40th part of the lysates were loaded in lanes 1 (Brain) and 2 (Liver) before IP and in lanes 3 (Brain) and 4 (Liver) after IP. Western blot probed with mouse anti- β Cstf-64/Cstf-64 antibody and detected by chemiluminescence. Data obtained from Dr P Grozdanov, Texas Tech University Health Sciences Center, USA.