

Datasheet for ABIN1686789  
**anti-RNF13 antibody (Internal Region)**[Go to Product page](#)

## 1 Image

## Overview

Quantity:	100 µg
Target:	RNF13
Binding Specificity:	Internal Region
Reactivity:	Mouse, Rat
Host:	Goat
Clonality:	Polyclonal
Conjugate:	This RNF13 antibody is un-conjugated
Application:	ELISA, Western Blotting (WB)

## Product Details

Purpose:	RNF13 / RZF
Sequence:	HKFKKGDEYD VC
Isotype:	IgG
Specificity:	This antibody is expected to recognize all reported isoforms (NP_009213.1, NP_899239.2, NP_899240.2).
Predicted Reactivity:	Human, Mouse, Rat, Dog, Cow
Purification:	Purified from goat serum by ammonium sulphate precipitation followed by antigen affinity chromatography using the immunizing peptide.
Grade:	Verified

## Target Details

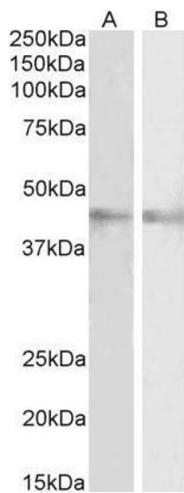
Target:	RNF13
Alternative Name:	RNF13 ( <a href="#">RNF13 Products</a> )
Background:	RNF13, ring finger protein 13, MGC13689, RZF, RING zinc finger protein
Molecular Weight:	45 kDa
Gene ID:	11342
NCBI Accession:	<a href="#">NP_009213</a> , <a href="#">NP_899237</a> , <a href="#">NP_899239</a> , <a href="#">NP_899240</a>

## Application Details

Application Notes:	DS WB Results: Approx 45 kDa band observed in Mouse Eye and in Rat Retina lysates (calculated MW of 42.8 kDa according to NP_009213.1). Recommended concentration: 2-4 µg/mL.  Peptide ELISA: antibody detection limit dilution 1:2000.
Restrictions:	For Research Use only

## Handling

Format:	Liquid
Concentration:	0.5 mg/mL
Buffer:	Supplied at 0.5 mg/mL in Tris saline, 0.02 % sodium azide, pH 7.3 with 0.5 % bovine serum albumin.
Preservative:	Sodium azide
Precaution of Use:	This product contains Sodium azide: a POISONOUS AND HAZARDOUS SUBSTANCE which should be handled by trained staff only.
Handling Advice:	Minimize freezing and thawing.
Storage:	-20 °C
Storage Comment:	Aliquot and store at -20°C, with minimal freeze/thawing. A working aliquot may be refrigerated at 4°C for a few weeks and still remain viable.



Western Blotting

**Image 1.** ABIN1686789 (2µg/ml) staining of Mouse (A) and Rat (B) Eye lysates (35µg protein in RIPA buffer). Primary incubation was 1 hour. Detected by chemiluminescence