

Datasheet for ABIN1699781

anti-CD200R1L antibody (AA 151-250) (AbBy Fluor® 647)[Go to Product page](#)**1** Image

Overview

Quantity:	100 µL
Target:	CD200R1L
Binding Specificity:	AA 151-250
Reactivity:	Human
Host:	Rabbit
Clonality:	Polyclonal
Conjugate:	This CD200R1L antibody is conjugated to AbBy Fluor® 647
Application:	Western Blotting (WB), Flow Cytometry (FACS), Immunofluorescence (Cultured Cells) (IF (cc)), Immunofluorescence (Paraffin-embedded Sections) (IF (p))

Product Details

Immunogen:	KLH conjugated synthetic peptide derived from human CD200R2
Isotype:	IgG
Cross-Reactivity:	Human
Purification:	Purified by Protein A.

Target Details

Target:	CD200R1L
Alternative Name:	CD200R2 (CD200R1L Products)
Background:	Synonyms: CD200R2, CD200RLa, Cell surface glycoprotein CD200 receptor 2, CD200 cell

Target Details

surface glycoprotein receptor-like 2, CD200 receptor-like 2, HuCD200R2, CD200 cell surface glycoprotein receptor-like a, Cell surface glycoprotein CD200 receptor 1-like, Cell surface glycoprotein OX2 receptor 2, CD200R1L

Background: May be a receptor for the CD200/OX2 cell surface glycoprotein.

Gene ID: 344807

UniProt: [Q6Q8B3](#)

Application Details

Application Notes: FCM 1:20-100
IF(IHC-P) 1:50-200
IF(IHC-F) 1:50-200
IF(ICC) 1:50-200

Restrictions: For Research Use only

Handling

Format: Liquid

Concentration: 1 µg/µL

Buffer: Aqueous buffered solution containing 0.01M TBS (pH 7.4) with 1 % BSA, 0.03 % Proclin300 and 50 % Glycerol.

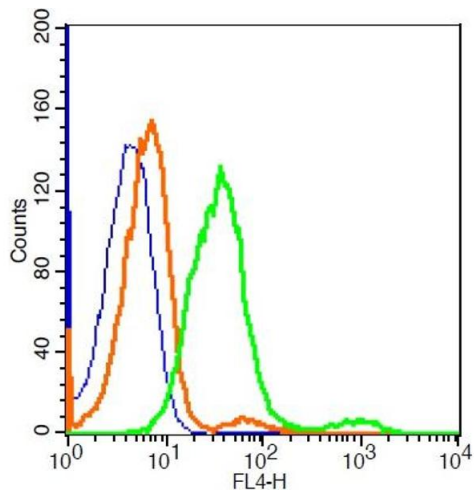
Preservative: ProClin

Precaution of Use: This product contains ProClin: a POISONOUS AND HAZARDOUS SUBSTANCE, which should be handled by trained staff only.

Storage: -20 °C

Storage Comment: Store at -20°C. Aliquot into multiple vials to avoid repeated freeze-thaw cycles.

Expiry Date: 12 months



Flow Cytometry

Image 1. HepG2 cells probed with Rabbit Anti-CD200R2 Polyclonal Antibody, A647 Conjugated (bs-7351R-A647) at 5ug for 30 minutes (green) compared to control cells (blue) and isotype control (orange).