



[Go to Product page](#)

Datasheet for ABIN1713370
anti-B7-H6 antibody (AA 51-150)

1 Image

Overview

Quantity:	100 µL
Target:	B7-H6 (NCR3LG1)
Binding Specificity:	AA 51-150
Reactivity:	Human, Mouse
Host:	Rabbit
Clonality:	Polyclonal
Conjugate:	This B7-H6 antibody is un-conjugated
Application:	Western Blotting (WB), ELISA, Immunofluorescence (Cultured Cells) (IF (cc)), Immunofluorescence (Paraffin-embedded Sections) (IF (p)), Immunohistochemistry (Paraffin-embedded Sections) (IHC (p)), Immunocytochemistry (ICC), Immunohistochemistry (Frozen Sections) (IHC (fro))

Product Details

Immunogen:	KLH conjugated synthetic peptide derived from human B7-H6
Isotype:	IgG
Cross-Reactivity:	Human, Mouse
Purification:	Purified by Protein A.

Target Details

Target:	B7-H6 (NCR3LG1)
Alternative Name:	B7-H6 (NCR3LG1 Products)

Target Details

Background: Synonyms: B7H6, B7-H6, DKFZp686O24166, Natural cytotoxicity triggering receptor 3 ligand 1, B7 homolog 6, NCR3LG1
Background: Triggers NCR3-dependent natural killer cell activation.

Gene ID: 374383

UniProt: [Q68D85](#)

Application Details

Application Notes: WB 1:300-5000
ELISA 1:500-1000
IHC-P 1:200-400
IHC-F 1:100-500
IF(IHC-P) 1:50-200
IF(IHC-F) 1:50-200
IF(ICC) 1:50-200
ICC 1:100-500

Restrictions: For Research Use only

Handling

Format: Liquid

Concentration: 1 µg/µL

Buffer: 0.01M TBS(pH 7.4) with 1 % BSA, 0.02 % Proclin300 and 50 % Glycerol.

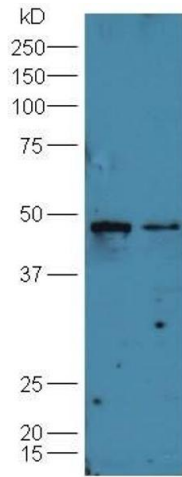
Preservative: ProClin

Precaution of Use: This product contains ProClin: a POISONOUS AND HAZARDOUS SUBSTANCE, which should be handled by trained staff only.

Storage: 4 °C, -20 °C

Storage Comment: Shipped at 4°C. Store at -20°C for one year. Avoid repeated freeze/thaw cycles.

Expiry Date: 12 months



Western Blotting

Image 1. Lane 1:Huh7 cell lysate Lane 2: A549 cell lysates probed with Rabbit Anti-B7-H6 Polyclonal Antibody, Unconjugated (ABIN1713370) at 1:300 overnight at 4 °C. Followed by conjugation to secondary antibody at 15000 for 90 min at 37 °C.