

Datasheet for ABIN1713405  
**anti-C2ORF16 antibody (AA 1901-1984)**



[Go to Product page](#)

1 Image

### Overview

Quantity:	100 µL
Target:	C2ORF16
Binding Specificity:	AA 1901-1984
Reactivity:	Human
Host:	Rabbit
Clonality:	Polyclonal
Conjugate:	This C2ORF16 antibody is un-conjugated
Application:	Immunofluorescence (Cultured Cells) (IF (cc)), Immunofluorescence (Paraffin-embedded Sections) (IF (p)), ELISA, Immunohistochemistry (Frozen Sections) (IHC (fro)), Immunohistochemistry (Paraffin-embedded Sections) (IHC (p)), Immunocytochemistry (ICC)

### Product Details

Immunogen:	KLH conjugated synthetic peptide derived from human C2orf16
Isotype:	IgG
Cross-Reactivity:	Human
Purification:	Purified by Protein A.

### Target Details

Target:	C2ORF16
Alternative Name:	C2orf16 ( <a href="#">C2ORF16 Products</a> )

## Target Details

---

**Background:** Synonyms: Uncharacterized protein C2orf16, C2orf16

Background: C2orf16 (chromosome 2 open reading frame 16), also known as DKFZp434G118 or DKFZp781D2023, is a 1,984 amino acid protein encoded by a gene that maps to human chromosome 2p23.3. As the second largest human chromosome, chromosome 2 makes up approximately 8 % of the human genome and contains 237 million bases encoding over 1,400 genes. A number of genetic diseases are linked to genes on chromosome 2. Harlequin ichthyosis, a rare skin deformity, is associated with mutations in the ABCA12 gene. The lipid metabolic disorder sitosterolemia is associated with ABCG5 and ABCG8. An extremely rare recessive genetic disorder, Alstr syndrome, is related to mutations in the ALMS1 gene. Chromosome 2 contains a probable vestigial second centromere as well as vestigial telomeres, which gives credence to the hypothesis that human chromosome 2 formed as a result of an ancient fusion of two ancestral chromosomes, which are still present in modern day apes.

---

**Gene ID:** 84226

---

**UniProt:** [Q68DN1](#)

## Application Details

---

**Application Notes:** ELISA 1:500-1000  
IHC-P 1:200-400  
IHC-F 1:100-500  
IF(IHC-P) 1:50-200  
IF(IHC-F) 1:50-200  
IF(ICC) 1:50-200  
ICC 1:100-500

---

**Restrictions:** For Research Use only

## Handling

---

**Format:** Liquid

---

**Concentration:** 1 µg/µL

---

**Buffer:** 0.01M TBS( pH 7.4) with 1 % BSA, 0.02 % Proclin300 and 50 % Glycerol.

---

**Preservative:** ProClin

---

**Precaution of Use:** This product contains ProClin: a POISONOUS AND HAZARDOUS SUBSTANCE, which should be handled by trained staff only.

---

## Handling

---

Storage: 4 °C, -20 °C

---

Storage Comment: Shipped at 4°C. Store at -20°C for one year. Avoid repeated freeze/thaw cycles.

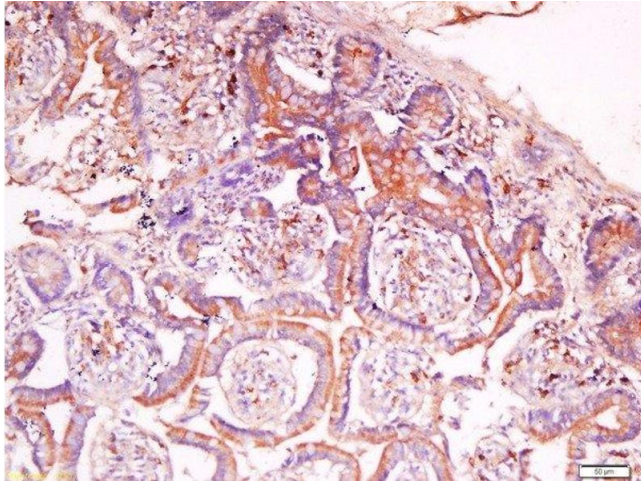
---

Expiry Date: 12 months

---

## Images

---



### Immunohistochemistry (Paraffin-embedded Sections)

**Image 1.** Paraformaldehyde-fixed, paraffin embedded human colon carcinoma, Antigen retrieval by boiling in sodium citrate buffer (pH6) for 15min, Block endogenous peroxidase by 3% hydrogen peroxide for 30 minutes, Blocking buffer (normal goat serum) at 37°C for 20min, Antibody incubation with Rabbit Anti-C2orf16 Polyclonal Antibody at 1:200 overnight at 4°C, followed by a conjugated secondary and DAB staining.