



[Go to Product page](#)

Datasheet for ABIN1713514  
**anti-GM2A antibody (AA 131-193)**

1 Image

Overview

Quantity:	100 µL
Target:	GM2A
Binding Specificity:	AA 131-193
Reactivity:	Human, Rat
Host:	Rabbit
Clonality:	Polyclonal
Conjugate:	This GM2A antibody is un-conjugated
Application:	Western Blotting (WB), ELISA, Immunofluorescence (Cultured Cells) (IF (cc)), Immunofluorescence (Paraffin-embedded Sections) (IF (p)), Immunohistochemistry (Paraffin- embedded Sections) (IHC (p)), Immunocytochemistry (ICC), Immunohistochemistry (Frozen Sections) (IHC (fro))

Product Details

Immunogen:	KLH conjugated synthetic peptide derived from human GM2A/SAP3
Isotype:	IgG
Cross-Reactivity:	Human, Rat
Purification:	Purified by Protein A.

Target Details

Target:	GM2A
Alternative Name:	GM2A ( <a href="#">GM2A Products</a> )

## Target Details

---

**Background:** Synonyms: SAP-3, GM2-AP, Ganglioside GM2 activator, Cerebroside sulfate activator protein, Sphingolipid activator protein 3, GM2A

Background: The large binding pocket can accommodate several single chain phospholipids and fatty acids, GM2A also exhibits some calcium-independent phospholipase activity (By similarity). Binds gangliosides and stimulates ganglioside GM2 degradation. It stimulates only the breakdown of ganglioside GM2 and glycolipid GA2 by beta-hexosaminidase A. It extracts single GM2 Molecules from membranes and presents them in soluble form to beta-hexosaminidase A for cleavage of N-acetyl-D-galactosamine and conversion to GM3.

---

**Gene ID:** 2760

---

**UniProt:** [P17900](#)

## Application Details

---

**Application Notes:** WB 1:300-5000  
ELISA 1:500-1000  
IHC-P 1:200-400  
IHC-F 1:100-500  
IF(IHC-P) 1:50-200  
IF(IHC-F) 1:50-200  
IF(ICC) 1:50-200  
ICC 1:100-500

---

**Restrictions:** For Research Use only

## Handling

---

**Format:** Liquid

---

**Concentration:** 1 µg/µL

---

**Buffer:** 0.01M TBS( pH 7.4) with 1 % BSA, 0.02 % Proclin300 and 50 % Glycerol.

---

**Preservative:** ProClin

---

**Precaution of Use:** This product contains ProClin: a POISONOUS AND HAZARDOUS SUBSTANCE, which should be handled by trained staff only.

---

**Storage:** 4 °C,-20 °C

---

**Storage Comment:** Shipped at 4°C. Store at -20°C for one year. Avoid repeated freeze/thaw cycles.

---

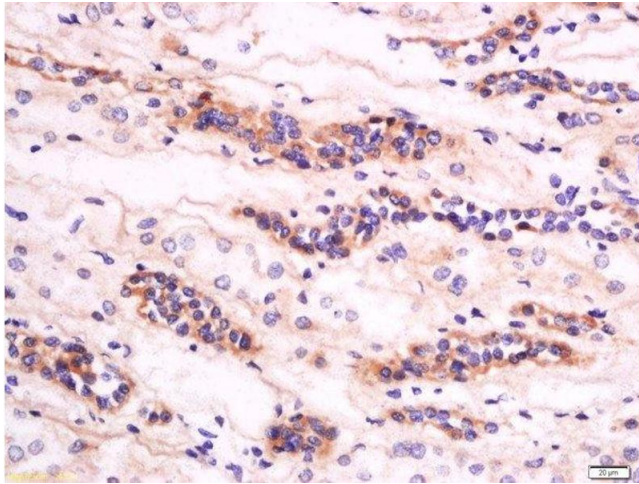
Handling

---

Expiry Date: 12 months

Images

---



#### Immunohistochemistry (Paraffin-embedded Sections)

**Image 1.** Formalin-fixed and paraffin embedded human kidney labeled with Anti-GM2A Polyclonal Antibody, Unconjugated at 1:200 followed by conjugation to the secondary antibody and DAB staining