

Datasheet for ABIN1713572
anti-SECTM1 antibody (AA 42-150)

2 Images

[Go to Product page](#)

Overview

Quantity:	100 µL
Target:	SECTM1
Binding Specificity:	AA 42-150
Reactivity:	Rat
Host:	Rabbit
Clonality:	Polyclonal
Conjugate:	This SECTM1 antibody is un-conjugated
Application:	Western Blotting (WB), ELISA, Immunofluorescence (Cultured Cells) (IF (cc)), Immunofluorescence (Paraffin-embedded Sections) (IF (p)), Immunocytochemistry (ICC), Immunohistochemistry (Frozen Sections) (IHC (fro)), Immunohistochemistry (Paraffin-embedded Sections) (IHC (p))

Product Details

Immunogen:	KLH conjugated synthetic peptide derived from human SECTM1
Isotype:	IgG
Cross-Reactivity:	Rat
Predicted Reactivity:	Human
Purification:	Purified by Protein A.

Target Details

Target:	SECTM1
---------	--------

Target Details

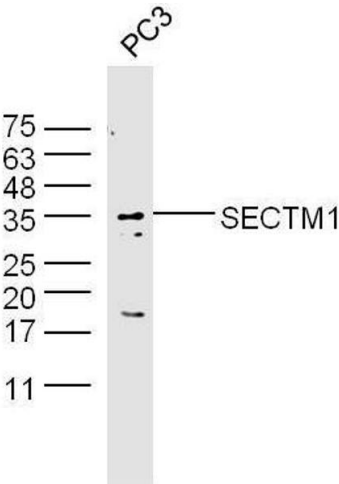
Alternative Name:	SECTM1 (SECTM1 Products)
Background:	Synonyms: K12, Secreted and transmembrane protein 1, Protein K-12, SECTM1 Background: Detected at the highest levels in peripheral blood leukocytes and breast cancer cell lines. Found in leukocytes of the myeloid lineage, with the strongest expression observed in granulocytes and no detectable expression in lymphocytes. Expressed in thymic epithelial cells and fibroblasts.Belongs to the SECTM family.
Gene ID:	6398
UniProt:	Q8WVN6

Application Details

Application Notes:	WB 1:300-5000 ELISA 1:500-1000 IHC-P 1:200-400 IHC-F 1:100-500 IF(IHC-P) 1:50-200 IF(IHC-F) 1:50-200 IF(ICC) 1:50-200 ICC 1:100-500
Restrictions:	For Research Use only

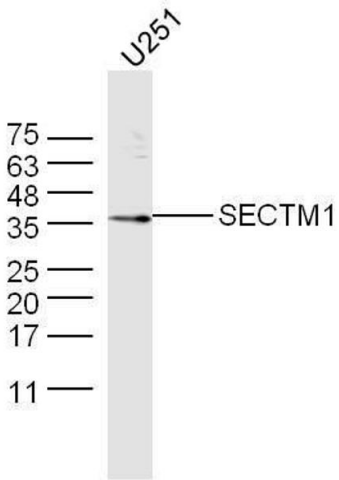
Handling

Format:	Liquid
Concentration:	1 µg/µL
Buffer:	0.01M TBS(pH 7.4) with 1 % BSA, 0.02 % Proclin300 and 50 % Glycerol.
Preservative:	ProClin
Precaution of Use:	This product contains ProClin: a POISONOUS AND HAZARDOUS SUBSTANCE, which should be handled by trained staff only.
Storage:	4 °C,-20 °C
Storage Comment:	Shipped at 4°C. Store at -20°C for one year. Avoid repeated freeze/thaw cycles.
Expiry Date:	12 months



Western Blotting

Image 1. PC3 lysates probed with Anti-SECTM1 Polyclonal Antibody at 1:5000 90min in 37°C.



Western Blotting

Image 2. U251 lysate probed with Anti-SECTM1 Polyclonal Antibody at 1:5000 90min in 37°C.