

Datasheet for ABIN1713588
anti-CHI3L2 antibody (AA 121-220)[Go to Product page](#)

1 Image

Overview

Quantity:	100 µL
Target:	CHI3L2
Binding Specificity:	AA 121-220
Reactivity:	Human
Host:	Rabbit
Clonality:	Polyclonal
Conjugate:	This CHI3L2 antibody is un-conjugated
Application:	Western Blotting (WB), ELISA, Immunofluorescence (Cultured Cells) (IF (cc)), Immunofluorescence (Paraffin-embedded Sections) (IF (p)), Immunohistochemistry (Paraffin- embedded Sections) (IHC (p)), Immunohistochemistry (Frozen Sections) (IHC (fro)), Immunocytochemistry (ICC)

Product Details

Immunogen:	KLH conjugated synthetic peptide derived from human YKL39/CHI3L2
Isotype:	IgG
Cross-Reactivity:	Human
Purification:	Purified by Protein A.

Target Details

Target:	CHI3L2
Alternative Name:	YKL39/CHI3L2 (CHI3L2 Products)

Target Details

Background:	<p>Synonyms: CH3L2_HUMAN, CHI3L2, Chitinase 3 like 2, Chitinase-3-like protein 2, Chondrocyte protein 39, OTTHUMP00000014028, YKL 39, YKL-39, YKL39.</p> <p>Background: YKL-39 is a 390 amino acid cartilage protein that belongs to the chitinase family of chitin-fragmenting hydrolases. Highly expressed in chondrocytes (cartilage cells) and synoviocytes (fibroblastic cells that line joint cavities), YKL-39 binds glycan structures with high affinity. Although related to bacterial chitinases, YKL-39 lacks the characteristic glutamate active site and, thus, does not have enzymatic chitinase activity. Patients affected with rheumatoid arthritis (RA) have autoimmunity against YKL-39, suggesting that YKL-39 is involved in osteoarthritic and/or rheumatoid joint disease. Additionally, YKL-39 is upregulated in early degenerative cartilage diseases (such as RA) and may be a marker of chondrocyte activation in these autoimmune conditions.</p>
-------------	---

Gene ID:	7690
----------	------

Application Details

Application Notes:	WB 1:300-5000
	ELISA 1:500-1000
	IHC-P 1:200-400
	IHC-F 1:100-500
	IF(IHC-P) 1:50-200
	IF(IHC-F) 1:50-200
	IF(ICC) 1:50-200
	ICC 1:100-500

Restrictions:	For Research Use only
---------------	-----------------------

Handling

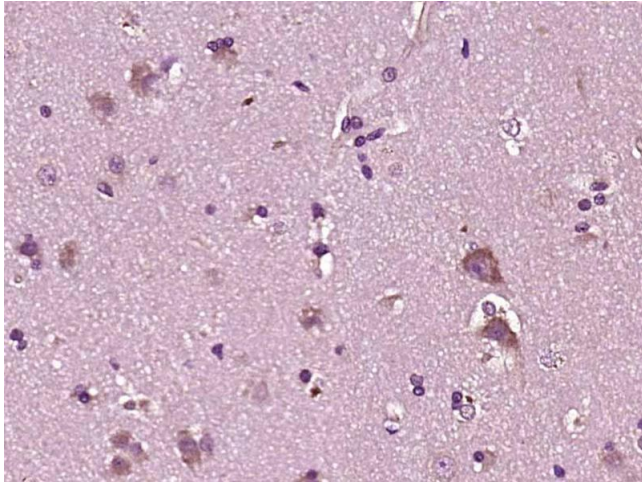
Format:	Liquid
Concentration:	1 µg/µL
Buffer:	0.01M TBS(pH 7.4) with 1 % BSA, 0.02 % Proclin300 and 50 % Glycerol.
Preservative:	ProClin
Precaution of Use:	This product contains ProClin: a POISONOUS AND HAZARDOUS SUBSTANCE, which should be handled by trained staff only.
Storage:	4 °C, -20 °C

Handling

Storage Comment: Shipped at 4°C. Store at -20°C for one year. Avoid repeated freeze/thaw cycles.

Expiry Date: 12 months

Images



Immunohistochemistry (Paraffin-embedded Sections)

Image 1. Paraformaldehyde-fixed, paraffin embedded human brain glioma; Antigen retrieval by boiling in sodium citrate buffer (pH6) for 15min; Block endogenous peroxidase by 3% hydrogen peroxide for 30 minutes; Blocking buffer (normal goat serum) at 37°C for 20min; Antibody incubation with YKL39/CHI3L2 Polyclonal Antibody, Unconjugated (bs-1238R) at 1:200 overnight at 4°C, followed by a conjugated secondary and DAB staining.