

Datasheet for ABIN1713639
anti-CMKLR1 antibody (AA 171-280)[Go to Product page](#)

1 Image

Overview

Quantity:	100 µL
Target:	CMKLR1
Binding Specificity:	AA 171-280
Reactivity:	Human, Mouse
Host:	Rabbit
Clonality:	Polyclonal
Conjugate:	This CMKLR1 antibody is un-conjugated
Application:	Western Blotting (WB), ELISA, Immunofluorescence (Cultured Cells) (IF (cc)), Immunofluorescence (Paraffin-embedded Sections) (IF (p)), Immunohistochemistry (Paraffin-embedded Sections) (IHC (p)), Immunocytochemistry (ICC), Immunohistochemistry (Frozen Sections) (IHC (fro))

Product Details

Immunogen:	KLH conjugated synthetic peptide derived from human CMKLR1
Isotype:	IgG
Cross-Reactivity:	Human, Mouse
Predicted Reactivity:	Dog, Sheep
Purification:	Purified by Protein A.

Target Details

Target:	CMKLR1
---------	--------

Target Details

Alternative Name:	CMKLR1 (CMKLR1 Products)
Background:	<p>Synonyms: Chemokine receptor-like 1, CHEMR23, ChemR23, DEZ, Chemokine like receptor 1, G protein coupled receptor ChemR23, G protein coupled receptor DEZ, CML1_HUMAN , Orphan G protein coupled receptor.</p> <p>Background: Chemokine-Like Receptor 1 (CMKLR1) is a serpentine transmembrane G-protein linked receptor. It is an orphan chemoattractant receptor, also known as ChemR23 or DEZ. CMKLR1 is expressed on the surface of monocyte-derived immature dendritic cells and peripheral plamacytoid dendritic (pDC) cells, but not on myeloid dendritic (mDC) cells, monocytes and lymphocytes. The expression of CMKLR1 on pDC is down-regulated after activation. Chemerin (TIG2) is a natural ligand of CMKLR1. The interaction of CMKLR1 with Chemerin induces pDC activation and chemotaxis. It has been shown that CMKLR1 is a coreceptor for several strains of SIV and HIV-1. CMKLR1 is a potential useful marker for distinguishing pDCs and mDCs.</p>
Gene ID:	1240

Application Details

Application Notes:	WB 1:300-5000 ELISA 1:500-1000 IHC-P 1:200-400 IHC-F 1:100-500 IF(IHC-P) 1:50-200 IF(IHC-F) 1:50-200 IF(ICC) 1:50-200 ICC 1:100-500
Restrictions:	For Research Use only

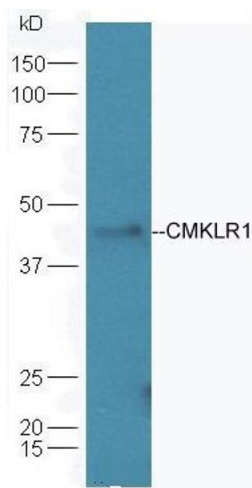
Handling

Format:	Liquid
Concentration:	1 µg/µL
Buffer:	0.01M TBS(pH 7.4) with 1 % BSA, 0.02 % Proclin300 and 50 % Glycerol.
Preservative:	ProClin
Precaution of Use:	This product contains ProClin: a POISONOUS AND HAZARDOUS SUBSTANCE, which should be

Handling

	handled by trained staff only.
Storage:	4 °C,-20 °C
Storage Comment:	Shipped at 4°C. Store at -20°C for one year. Avoid repeated freeze/thaw cycles.
Expiry Date:	12 months

Images



Western Blotting

Image 1. Mouse brain lysates probed with Anti-CMKLR1 Polyclonal Antibody (ABIN1713639) at 1:300 overnight in 4°C. Followed by conjugation to the secondary antibody at 1:5000 90min in 37°C.