

Datasheet for ABIN1713640
anti-DIAPH2 antibody (AA 901-1101)[Go to Product page](#)

1 Image

Overview

Quantity:	100 µL
Target:	DIAPH2
Binding Specificity:	AA 901-1101
Reactivity:	Rat
Host:	Rabbit
Clonality:	Polyclonal
Conjugate:	This DIAPH2 antibody is un-conjugated
Application:	Western Blotting (WB), ELISA, Immunofluorescence (Cultured Cells) (IF (cc)), Immunofluorescence (Paraffin-embedded Sections) (IF (p)), Immunohistochemistry (Paraffin- embedded Sections) (IHC (p)), Immunohistochemistry (Frozen Sections) (IHC (fro)), Immunocytochemistry (ICC)

Product Details

Immunogen:	KLH conjugated synthetic peptide derived from human DIAPH2/Dia2
Isotype:	IgG
Cross-Reactivity:	Rat
Predicted Reactivity:	Human,Dog,Horse,Rabbit
Purification:	Purified by Protein A.

Target Details

Target:	DIAPH2
---------	--------

Target Details

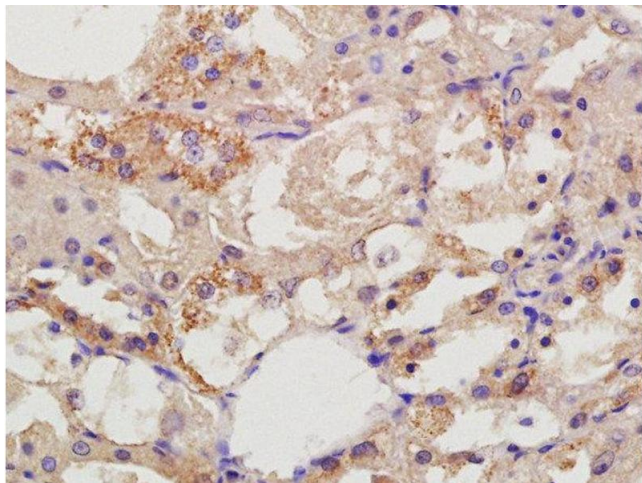
Alternative Name:	DIAPH2/Dia2 (DIAPH2 Products)
Background:	<p>Synonyms: DIA, POF, DIA2, DRF2, POF2, Protein diaphanous homolog 2, Diaphanous-related formin-2, DIAPH2</p> <p>Background: Could be involved in oogenesis. Involved in the regulation of endosome dynamics. Implicated in a novel signal transduction pathway, in which isoform 3 and CSK are sequentially activated by RHOD to regulate the motility of early endosomes through interactions with the actin cytoskeleton.</p>
Gene ID:	1730
UniProt:	O60879

Application Details

Application Notes:	<p>WB 1:300-5000</p> <p>ELISA 1:500-1000</p> <p>IHC-P 1:200-400</p> <p>IHC-F 1:100-500</p> <p>IF(IHC-P) 1:50-200</p> <p>IF(IHC-F) 1:50-200</p> <p>IF(ICC) 1:50-200</p> <p>ICC 1:100-500</p>
Restrictions:	For Research Use only

Handling

Format:	Liquid
Concentration:	1 µg/µL
Buffer:	0.01M TBS(pH 7.4) with 1 % BSA, 0.02 % Proclin300 and 50 % Glycerol.
Preservative:	ProClin
Precaution of Use:	This product contains ProClin: a POISONOUS AND HAZARDOUS SUBSTANCE, which should be handled by trained staff only.
Storage:	4 °C,-20 °C
Storage Comment:	Shipped at 4°C. Store at -20°C for one year. Avoid repeated freeze/thaw cycles.
Expiry Date:	12 months



Immunohistochemistry (Paraffin-embedded Sections)

Image 1. Formalin-fixed and paraffin embedded rat kidney labeled with Rabbit Anti-DIAPH2/Dia2 Polyclonal Antibody, Unconjugated at 1:200 followed by conjugation to the secondary antibody and DAB staining