

Datasheet for ABIN1713662

**anti-G Protein-Coupled Receptor 110 antibody (AA 51-150)**[Go to Product page](#)**3** Images

## Overview

Quantity:	100 µL
Target:	G Protein-Coupled Receptor 110 (GPR110)
Binding Specificity:	AA 51-150
Reactivity:	Human, Mouse
Host:	Rabbit
Clonality:	Polyclonal
Conjugate:	This G Protein-Coupled Receptor 110 antibody is un-conjugated
Application:	Western Blotting (WB), ELISA, Immunofluorescence (Cultured Cells) (IF (cc)), Immunofluorescence (Paraffin-embedded Sections) (IF (p)), Flow Cytometry (FACS), Immunohistochemistry (Paraffin-embedded Sections) (IHC (p)), Immunohistochemistry (Frozen Sections) (IHC (fro)), Immunocytochemistry (ICC)

## Product Details

Immunogen:	KLH conjugated synthetic peptide derived from human G protein coupled receptor 110
Isotype:	IgG
Cross-Reactivity:	Human, Mouse
Purification:	Purified by Protein A.

## Target Details

Target:	G Protein-Coupled Receptor 110 (GPR110)
Alternative Name:	GPR110 ( <a href="#">GPR110 Products</a> )

## Target Details

Background:	<p>Synonyms: PGR19, GPR110, KPG_012, hGPCR36, Adhesion G-protein coupled receptor F1, G-protein coupled receptor 110, G-protein coupled receptor KPG_012, G-protein coupled receptor PGR19, ADGRF1</p> <p>Background: G protein-coupled receptors (GPRs), also known as seven transmembrane receptors, heptahelical receptors or 7TM receptors, comprise a superfamily of proteins that play a role in many different stimulus-response pathways. G protein coupled receptors translate extracellular signals into intracellular signals (G protein activation) and they respond to a variety of signaling molecules, such as hormones and neurotransmitters. GPR110 (G protein-coupled receptor 110), also known as PGR19, is a 911 amino acid protein that belongs to the G-protein coupled receptor 2 family and LN-TM7 subfamily. Characterized as an adhesion GPCR, GPR110 is a multipass membrane-bound protein with a long amino-terminus that contains multiple domains. One of these domains is the GPCR proteolytic site (GPS), which is essential for proteolytic cleavage of the amino-terminus and for cell surface expression.</p>
Gene ID:	266977
UniProt:	<a href="#">Q5T601</a>

## Application Details

Application Notes:	WB 1:300-5000 ELISA 1:500-1000 FCM 1:20-100 IHC-P 1:200-400 IHC-F 1:100-500 IF(IHC-P) 1:50-200 IF(IHC-F) 1:50-200 IF(ICC) 1:50-200 ICC 1:100-500
Restrictions:	For Research Use only

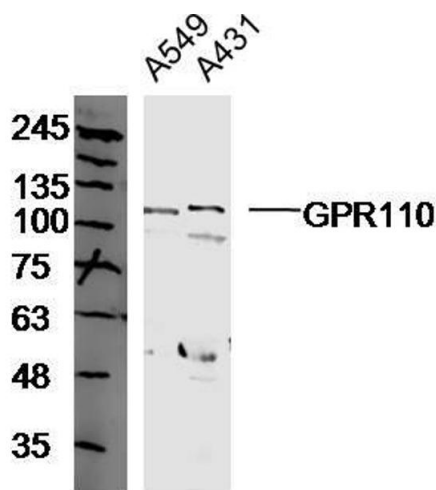
## Handling

Format:	Liquid
Concentration:	1 µg/µL
Buffer:	0.01M TBS( pH 7.4) with 1 % BSA, 0.02 % Proclin300 and 50 % Glycerol.
Preservative:	ProClin

Handling

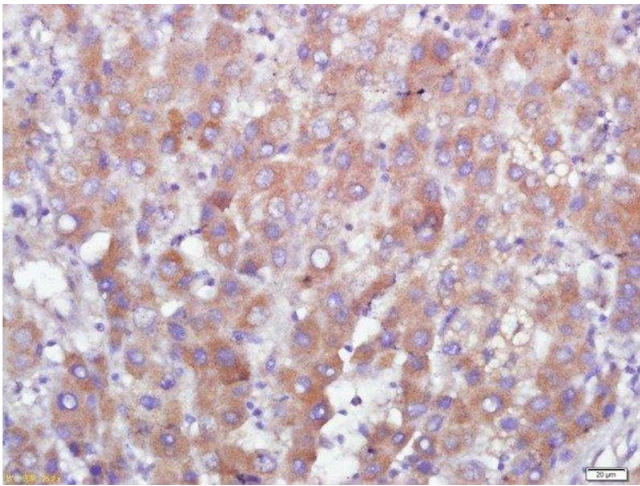
Precaution of Use:	This product contains ProClin: a POISONOUS AND HAZARDOUS SUBSTANCE, which should be handled by trained staff only.
Storage:	4 °C,-20 °C
Storage Comment:	Shipped at 4°C. Store at -20°C for one year. Avoid repeated freeze/thaw cycles.
Expiry Date:	12 months

Images



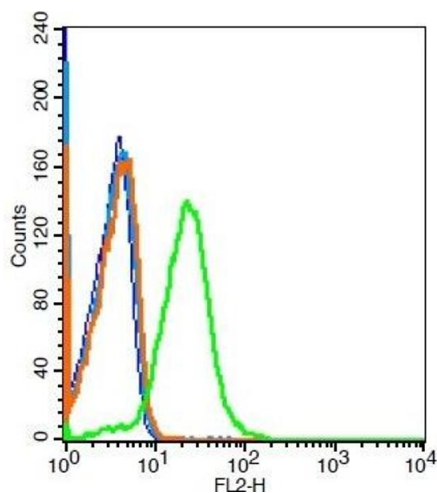
Western Blotting

**Image 1.** Human A549 and A431 cell lysates probed with GPR110 Polyclonal Antibody, unconjugated at 1:300 overnight at 4°C followed by a conjugated secondary antibody at 1:10000 for 90 minutes at 37°C.



Immunohistochemistry (Paraffin-embedded Sections)

**Image 2.** Paraformaldehyde-fixed, paraffin embedded human liver carcinoma tissue, Antigen retrieval by boiling in sodium citrate buffer(pH6) for 15min, Block endogenous peroxidase by 3% hydrogen peroxide for 30 minutes, Blocking buffer (normal goat serum) at 37°C for 20min, Antibody incubation with GPR110 Polyclonal Antibody, Unconjugated at 1:500 overnight at 4°C, followed by a conjugated secondary and DAB staining



### Flow Cytometry

**Image 3.** Mouse kidney cells probed with GPR110 Polyclonal Antibody, Unconjugated at 1:100 for 30 minutes followed by incubation with a conjugated secondary -PE (green) for 30 minutes compared to control cells (blue), secondary only (light blue) and isotype control (orange).