

Datasheet for ABIN1713713
anti-C1ORF106 antibody (AA 601-663)[Go to Product page](#)

1 Image

Overview

Quantity:	100 µL
Target:	C1ORF106
Binding Specificity:	AA 601-663
Reactivity:	Human, Mouse, Rat
Host:	Rabbit
Clonality:	Polyclonal
Conjugate:	This C1ORF106 antibody is un-conjugated
Application:	Immunofluorescence (Paraffin-embedded Sections) (IF (p)), Immunohistochemistry (Paraffin-embedded Sections) (IHC (p))

Product Details

Immunogen:	KLH conjugated synthetic peptide derived from human C1orf106
Isotype:	IgG
Cross-Reactivity:	Human, Mouse, Rat
Purification:	Purified by Protein A.

Target Details

Target:	C1ORF106
Alternative Name:	C1orf106 (C1ORF106 Products)
Background:	Synonyms: Uncharacterized protein C1orf106, C1orf106

Target Details

Background: Chromosome 1 is the largest human chromosome spanning about 260 million base pairs and making up 8 % of the human genome. There are about 3,000 genes on chromosome 1, and considering the great number of genes there are also a large number of diseases associated with chromosome 1. Notably, the rare aging disease Hutchinson-Gilford progeria is associated with the LMNA gene which encodes lamin A. When defective, the LMNA gene product can build up in the nucleus and cause characteristic nuclear blebs. The mechanism of rapidly enhanced aging is unclear and is a topic of continuing exploration. The MUTYH gene is located on chromosome 1 and is partially responsible for familial adenomatous polyposis. Stickler syndrome, Parkinsons, Gaucher disease and Usher syndrome are also associated with chromosome 1. A breakpoint has been identified in 1q which disrupts the DISC1 gene and is linked to schizophrenia. Aberrations in chromosome 1 are found in a variety of cancers including head and neck cancer, malignant melanoma and multiple myeloma. The C1orf106 gene product has been provisionally designated C1orf106 pending further characterization.

Gene ID: 55765

UniProt: [Q3KP66](#)

Application Details

Application Notes: IHC-P 1:200-400
IF(IHC-P) 1:50-200

Restrictions: For Research Use only

Handling

Format: Liquid

Concentration: 1 µg/µL

Buffer: 0.01M TBS(pH 7.4) with 1 % BSA, 0.02 % Proclin300 and 50 % Glycerol.

Preservative: ProClin

Precaution of Use: This product contains ProClin: a POISONOUS AND HAZARDOUS SUBSTANCE, which should be handled by trained staff only.

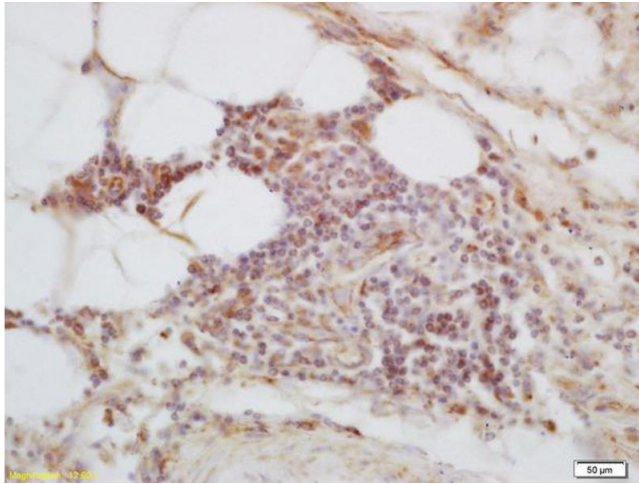
Storage: 4 °C,-20 °C

Storage Comment: Shipped at 4°C. Store at -20°C for one year. Avoid repeated freeze/thaw cycles.

Handling

Expiry Date: 12 months

Images



Immunohistochemistry

Image 1. Formalin-fixed and paraffin embedded human lung carcinoma labeled with Anti-C1orf106 Polyclonal Antibody, Unconjugated (ABIN1713713) at 1:200 followed by conjugation to the secondary antibody and DAB staining