

Datasheet for ABIN1713782
anti-Adipsin antibody (AA 21-120)[Go to Product page](#)

1 Image

Overview

Quantity:	100 µL
Target:	Adipsin (CFD)
Binding Specificity:	AA 21-120
Reactivity:	Human, Mouse
Host:	Rabbit
Clonality:	Polyclonal
Conjugate:	This Adipsin antibody is un-conjugated
Application:	Western Blotting (WB), ELISA, Immunocytochemistry (ICC), Immunofluorescence (Cultured Cells) (IF (cc)), Immunofluorescence (Paraffin-embedded Sections) (IF (p)), Immunohistochemistry (Paraffin-embedded Sections) (IHC (p)), Immunohistochemistry (Frozen Sections) (IHC (fro))

Product Details

Immunogen:	KLH conjugated synthetic peptide derived from human Factor D/Adipsin
Isotype:	IgG
Cross-Reactivity:	Human, Mouse
Predicted Reactivity:	Rat
Purification:	Purified by Protein A.

Target Details

Target:	Adipsin (CFD)
---------	---------------

Target Details

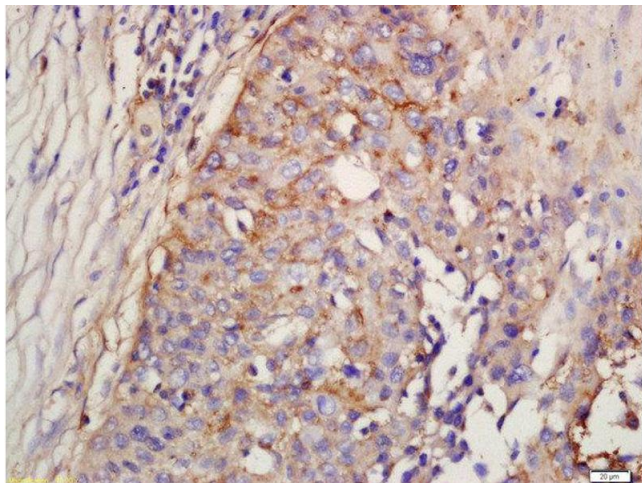
Abstract:	CFD Products
Background:	<p>Synonyms: DF, ADN, PFD, ADIPSIN, Complement factor D, C3 convertase activator, Properdin factor D, CFD</p> <p>Background: Factor D cleaves factor B when the latter is complexed with factor C3b, activating the C3bbb complex, which then becomes the C3 convertase of the alternate pathway. Its function is homologous to that of C1s in the classical pathway.</p>
Gene ID:	1675
UniProt:	P00746
Pathways:	Complement System

Application Details

Application Notes:	<p>WB 1:300-5000</p> <p>ELISA 1:500-1000</p> <p>IHC-P 1:200-400</p> <p>IHC-F 1:100-500</p> <p>IF(IHC-P) 1:50-200</p> <p>IF(IHC-F) 1:50-200</p> <p>IF(ICC) 1:50-200</p> <p>ICC 1:100-500</p>
Restrictions:	For Research Use only

Handling

Format:	Liquid
Concentration:	1 µg/µL
Buffer:	0.01M TBS(pH 7.4) with 1 % BSA, 0.02 % Proclin300 and 50 % Glycerol.
Preservative:	ProClin
Precaution of Use:	This product contains ProClin: a POISONOUS AND HAZARDOUS SUBSTANCE, which should be handled by trained staff only.
Storage:	4 °C,-20 °C
Storage Comment:	Shipped at 4°C. Store at -20°C for one year. Avoid repeated freeze/thaw cycles.
Expiry Date:	12 months



Immunohistochemistry (Paraffin-embedded Sections)

Image 1. Formalin-fixed and paraffin embedded human lung carcinoma labeled with Rabbit Anti-Factor D/Adipsin Polyclonal Antibody, Unconjugated (ABIN1713782) at 1:200 followed by conjugation to the secondary antibody and DAB staining