

Datasheet for ABIN1713827
anti-GPR45 antibody (AA 251-350)[Go to Product page](#)

1 Image

Overview

Quantity:	100 µL
Target:	GPR45
Binding Specificity:	AA 251-350
Reactivity:	Mouse
Host:	Rabbit
Clonality:	Polyclonal
Conjugate:	This GPR45 antibody is un-conjugated
Application:	Western Blotting (WB), Immunohistochemistry (Paraffin-embedded Sections) (IHC (p)), ELISA, Immunocytochemistry (ICC), Immunofluorescence (Cultured Cells) (IF (cc)), Immunofluorescence (Paraffin-embedded Sections) (IF (p)), Immunohistochemistry (Frozen Sections) (IHC (fro))

Product Details

Immunogen:	KLH conjugated synthetic peptide derived from human GPR45
Isotype:	IgG
Cross-Reactivity:	Mouse
Predicted Reactivity:	Human
Purification:	Purified by Protein A.

Target Details

Target:	GPR45
---------	-------

Target Details

Alternative Name: GPR45 ([GPR45 Products](#))

Background: Synonyms: G protein coupled receptor 45, High affinity lysophosphatidic acid receptor, Probable G protein coupled receptor 45, GPCR 45, PSP24 1, PSP24 alpha, PSP24, PSP24ALPHA, PSP241, PSP24A.

Background: G protein-coupled receptors (GPCRs), also designated seven transmembrane (7TM) receptors and heptahelical receptors, are a protein family which interact with G proteins (heterotrimeric GTPases) to synthesize intracellular second messengers such as diacylglycerol, cyclic AMP, inositol phosphates, and calcium ions. Their diverse biological functions range from vision and olfaction to neuronal and endocrine signaling and are involved in many pathological conditions. G protein receptor 54 (GPR54), a member of the rhodopsin family of GPCRs, is the receptor for the Kiss1 gene product, metastin. Mutations in GPCR54 are associated with a lack of puberty onset and autosomal recessive idiopathic hypogonadotropic hypogonadism, a deficient or decreased function of the gonads. Proper function of GRP54 is essential for puberty. In the rat, GRP54 is expressed in the liver, intestine and most areas of the brain, while in the human it is expressed in the placenta, pituitary, pancreas and spinal cord.

Gene ID: 11250

Application Details

Application Notes: WB 1:300-5000
ELISA 1:500-1000
IHC-P 1:200-400
IHC-F 1:100-500
IF(IHC-P) 1:50-200
IF(IHC-F) 1:50-200
IF(ICC) 1:50-200
ICC 1:100-500

Restrictions: For Research Use only

Handling

Format: Liquid

Concentration: 1 µg/µL

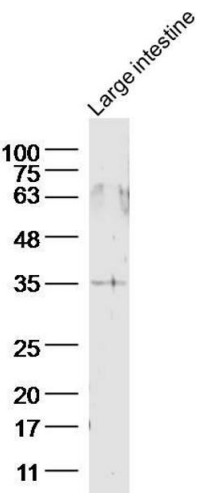
Buffer: 0.01M TBS(pH 7.4) with 1 % BSA, 0.02 % Proclin300 and 50 % Glycerol.

Preservative: ProClin

Handling

Precaution of Use:	This product contains ProClin: a POISONOUS AND HAZARDOUS SUBSTANCE, which should be handled by trained staff only.
Storage:	4 °C,-20 °C
Storage Comment:	Shipped at 4°C. Store at -20°C for one year. Avoid repeated freeze/thaw cycles.
Expiry Date:	12 months

Images



Western Blotting

Image 1. Mouse large intestine lysates, probed with GPR45 Polyclonal Antibody, unconjugated at 1:300 overnight at 4°C followed by a conjugated secondary antibody for 60 minutes at 37°C.