

Datasheet for ABIN1713842 anti-MHC Class II antibody (AA 111-200)

[Go to Product page](#)

2 Images

Overview

Quantity:	100 µL
Target:	MHC Class II (MHC2)
Binding Specificity:	AA 111-200
Reactivity:	Mouse, Human
Host:	Rabbit
Clonality:	Polyclonal
Conjugate:	This MHC Class II antibody is un-conjugated
Application:	Western Blotting (WB), Immunohistochemistry (Frozen Sections) (IHC (fro)), Immunohistochemistry (Paraffin-embedded Sections) (IHC (p)), Immunofluorescence (Paraffin-embedded Sections) (IF (p)), Immunofluorescence (Cultured Cells) (IF (cc)), ELISA, Immunocytochemistry (ICC)

Product Details

Immunogen:	KLH conjugated synthetic peptide derived from human HLA class II histocompatibility antigen DM beta chain
Isotype:	IgG
Cross-Reactivity:	Human, Mouse
Predicted Reactivity:	Rat
Purification:	Purified by Protein A.

Target Details

Target:	MHC Class II (MHC2)
Alternative Name:	MHC Class II (MHC2 Products)
Background:	<p>Synonyms: RING7, D6S221E, HLA class II histocompatibility antigen, DM beta chain, MHC class II antigen DMB, Really interesting new gene 7 protein, HLA-DMB, DMB</p> <p>Background: Plays a critical role in catalyzing the release of class II-associated invariant chain peptide (CLIP) from newly synthesized MHC class II molecules and freeing the peptide binding site for acquisition of antigenic peptides. In B-cells, the interaction between HLA-DM and MHC class II molecules is regulated by HLA-DO.</p>
Gene ID:	3109
UniProt:	P28068

Application Details

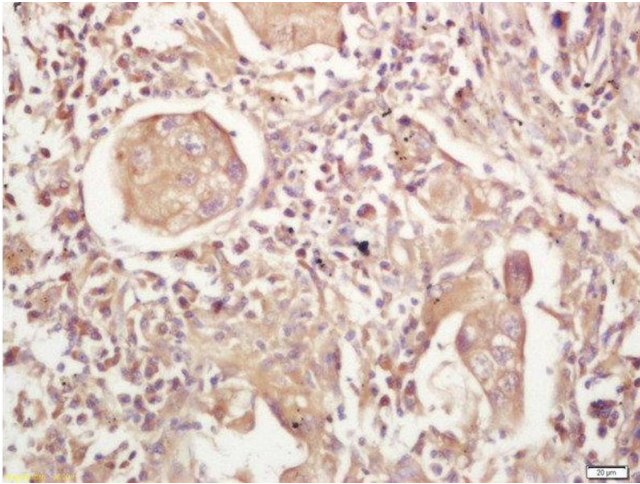
Application Notes:	WB 1:300-5000 ELISA 1:500-1000 IHC-P 1:200-400 IHC-F 1:100-500 IF(IHC-P) 1:50-200 IF(IHC-F) 1:50-200 IF(ICC) 1:50-200 ICC 1:100-500
Restrictions:	For Research Use only

Handling

Format:	Liquid
Concentration:	1 µg/µL
Buffer:	0.01M TBS(pH 7.4) with 1 % BSA, 0.02 % Proclin300 and 50 % Glycerol.
Preservative:	ProClin
Precaution of Use:	This product contains ProClin: a POISONOUS AND HAZARDOUS SUBSTANCE, which should be handled by trained staff only.
Storage:	4 °C,-20 °C
Storage Comment:	Shipped at 4°C. Store at -20°C for one year. Avoid repeated freeze/thaw cycles.

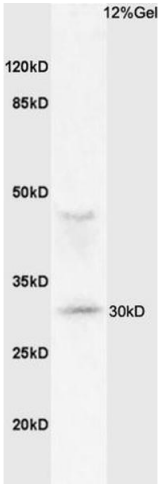
Expiry Date: 12 months

Images



Immunohistochemistry (Paraffin-embedded Sections)

Image 1. Formalin-fixed and paraffin embedded human lung carcinoma labeled with Rabbit Anti-MHC Class II Polyclonal Antibody, Unconjugated at 1:200 followed by conjugation to the secondary antibody and DAB staining



SDS-PAGE

Image 2. Mouse lung lysates probed with Anti MHC Class II Polyclonal Antibody, Unconjugated (ABIN1713842) at 1:200 overnight at 4 °C. Followed by conjugation to secondary antibody at 1:3000 for 90 min at 37 °C. Predicted band 27kD. Observed band size: 30kD