

Datasheet for ABIN1713878
anti-PAG1 antibody (AA 331-432)[Go to Product page](#)

2 Images

Overview

Quantity:	100 µL
Target:	PAG1
Binding Specificity:	AA 331-432
Reactivity:	Mouse, Rat
Host:	Rabbit
Clonality:	Polyclonal
Conjugate:	This PAG1 antibody is un-conjugated
Application:	Western Blotting (WB), ELISA, Immunohistochemistry (Paraffin-embedded Sections) (IHC (p)), Flow Cytometry (FACS), Immunofluorescence (Cultured Cells) (IF (cc)), Immunofluorescence (Paraffin-embedded Sections) (IF (p)), Immunocytochemistry (ICC), Immunohistochemistry (Frozen Sections) (IHC (fro))

Product Details

Immunogen:	KLH conjugated synthetic peptide derived from human PAG1
Isotype:	IgG
Cross-Reactivity:	Mouse, Rat
Predicted Reactivity:	Human,Dog,Horse,Rabbit
Purification:	Purified by Protein A.

Target Details

Target:	PAG1
---------	------

Target Details

Alternative Name:	PAG1 (PAG1 Products)
Background:	<p>Synonyms: CBP, PAG, Phosphoprotein associated with glycosphingolipid-enriched microdomains 1, Csk-binding protein, Transmembrane adapter protein PAG, Transmembrane phosphoprotein Cbp, PAG1</p> <p>Background: Negatively regulates TCR (T-cell antigen receptor)-mediated signaling in T-cells and FCER1 (high affinity immunoglobulin epsilon receptor)-mediated signaling in mast cells. Promotes CSK activation and recruitment to lipid rafts, which results in LCK inhibition. Inhibits immunological synapse formation by preventing dynamic arrangement of lipid raft proteins. May be involved in cell adhesion signaling.</p>
Gene ID:	55824
UniProt:	Q9NWX8
Pathways:	p53 Signaling , TCR Signaling , EGFR Signaling Pathway , CXCR4-mediated Signaling Events

Application Details

Application Notes:	WB 1:300-5000 ELISA 1:500-1000 FCM 1:20-100 IHC-P 1:200-400 IHC-F 1:100-500 IF(IHC-P) 1:50-200 IF(IHC-F) 1:50-200 IF(ICC) 1:50-200 ICC 1:100-500
Restrictions:	For Research Use only

Handling

Format:	Liquid
Concentration:	1 µg/µL
Buffer:	0.01M TBS(pH 7.4) with 1 % BSA, 0.02 % Proclin300 and 50 % Glycerol.
Preservative:	ProClin
Precaution of Use:	This product contains ProClin: a POISONOUS AND HAZARDOUS SUBSTANCE, which should be handled by trained staff only.

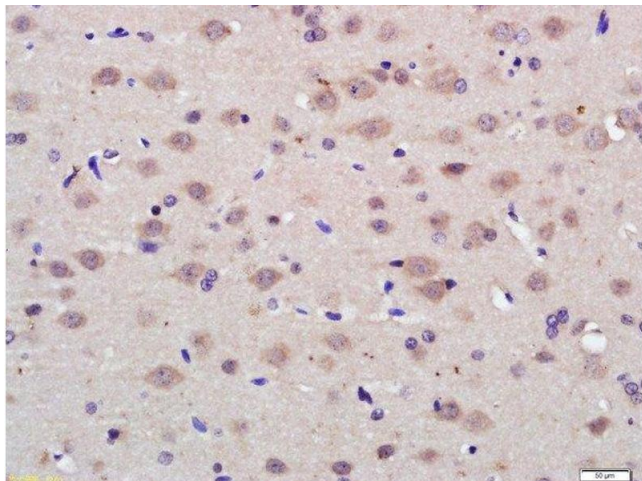
Handling

Storage: 4 °C, -20 °C

Storage Comment: Shipped at 4°C. Store at -20°C for one year. Avoid repeated freeze/thaw cycles.

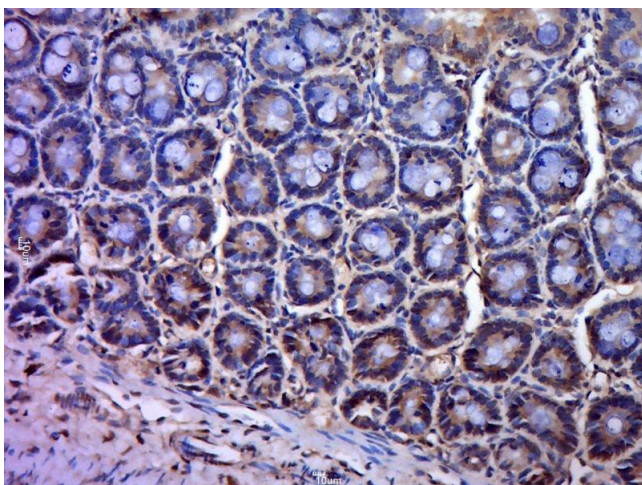
Expiry Date: 12 months

Images



Immunohistochemistry (Paraffin-embedded Sections)

Image 1. Paraformaldehyde-fixed, paraffin embedded rat brain tissue, Antigen retrieval by boiling in sodium citrate buffer(pH6) for 15min, Block endogenous peroxidase by 3% hydrogen peroxide for 30 minutes, Blocking buffer (normal goat serum) at 37°C for 20min, Antibody incubation with Rabbit Anti-PAG1 Polyclonal Antibody, Unconjugated at 1:200 overnight at 4°C, followed by a conjugated secondary and DAB staining



Immunohistochemistry (Paraffin-embedded Sections)

Image 2. Paraformaldehyde-fixed, paraffin embedded mouse small intestine, Antigen retrieval by boiling in sodium citrate buffer(pH6) for 15min, Block endogenous peroxidase by 3% hydrogen peroxide for 30 minutes, Blocking buffer (normal goat serum) at 37°C for 20min, Antibody incubation with Rabbit Anti-PAG1 Polyclonal Antibody, Unconjugated at 1:400 overnight at 4°C, followed by a conjugated secondary and DAB staining