

Datasheet for ABIN1713901
anti-SLAP2 antibody (AA 101-200)[Go to Product page](#)

1 Image

Overview

Quantity:	100 µL
Target:	SLAP2 (SLA2)
Binding Specificity:	AA 101-200
Reactivity:	Mouse, Rat
Host:	Rabbit
Clonality:	Polyclonal
Conjugate:	This SLAP2 antibody is un-conjugated
Application:	Western Blotting (WB), Immunohistochemistry (Paraffin-embedded Sections) (IHC (p)), ELISA, Immunocytochemistry (ICC), Immunofluorescence (Cultured Cells) (IF (cc)), Immunofluorescence (Paraffin-embedded Sections) (IF (p)), Immunohistochemistry (Frozen Sections) (IHC (fro))

Product Details

Immunogen:	KLH conjugated synthetic peptide derived from human SLAP2
Isotype:	IgG
Cross-Reactivity:	Mouse, Rat
Predicted Reactivity:	Human,Dog,Cow,Sheep,Rabbit
Purification:	Purified by Protein A.

Target Details

Target:	SLAP2 (SLA2)
---------	--------------

Target Details

Alternative Name: SLAP2 ([SLA2 Products](#))

Background: Synonyms: A930009E21Rik, A1430952, C20orf156, FLJ21992, MARS, MGC49845, Modulator of antigen receptor signaling, RGD1562071, SLA 2, SLA2, SLAP 2, SLAP-2, SLAP2, SLAP2_HUMAN, Src like adapter protein 2, Src like adaptor 2, Src-like adapter protein 2, Src-like-adaptor 2.

Background: SLA2 is a 261 amino acid protein that exists as four alternatively spliced isoforms which localize to either the cytoplasm or to the cell membrane and contain one SH2 domain and one SH3 domain. Expressed predominately in tissues of the immune system, including thymus, spleen and lymph nodes, SLA2 functions as an adaptor protein that negatively regulates T-cell receptor (TCR) signaling and may inhibit T-cell activation. SLA2 interacts with Zap-70 and is subject to post-translational phosphorylation. The gene encoding SLA2 maps to human chromosome 20. Comprising approximately 2 % of the human genome, chromosome 20 contains nearly 63 million bases that encode over 600 genes, some of which are associated with Creutzfeldt-Jakob disease, amyotrophic lateral sclerosis, spinal muscular atrophy, ring chromosome 20 epilepsy syndrome and Alagille syndrome.

Application Details

Application Notes: WB 1:300-5000
ELISA 1:500-1000
IHC-P 1:200-400
IHC-F 1:100-500
IF(IHC-P) 1:50-200
IF(IHC-F) 1:50-200
IF(ICC) 1:50-200
ICC 1:100-500

Restrictions: For Research Use only

Handling

Format: Liquid

Concentration: 1 µg/µL

Buffer: 0.01M TBS(pH 7.4) with 1 % BSA, 0.02 % Proclin300 and 50 % Glycerol.

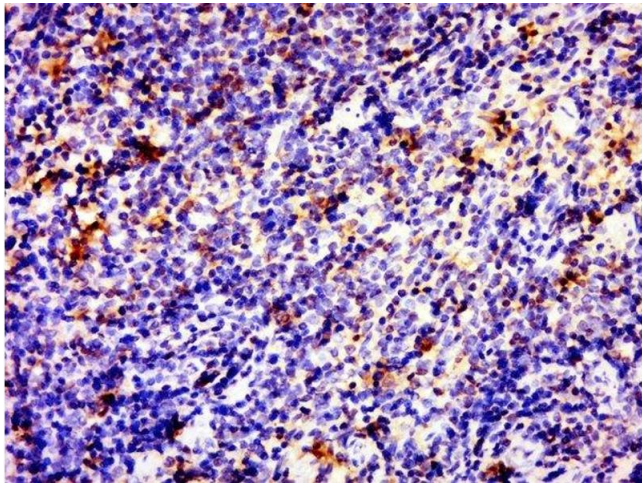
Preservative: ProClin

Precaution of Use: This product contains ProClin: a POISONOUS AND HAZARDOUS SUBSTANCE, which should be handled by trained staff only.

Handling

Storage:	4 °C,-20 °C
Storage Comment:	Shipped at 4°C. Store at -20°C for one year. Avoid repeated freeze/thaw cycles.
Expiry Date:	12 months

Images



Immunohistochemistry (Paraffin-embedded Sections)

Image 1. Paraformaldehyde-fixed, paraffin embedded rat spleen tissue, Antigen retrieval by boiling in sodium citrate buffer(pH6) for 15min, Block endogenous peroxidase by 3% hydrogen peroxide for 30 minutes, Blocking buffer (normal goat serum) at 37°C for 20min, Antibody incubation with Rabbit Anti-SLAP2 Polyclonal Antibody, Unconjugated at 1:500 overnight at 4°C, followed by a conjugated secondary and DAB staining