

Datasheet for ABIN1714019
anti-ANKK1 antibody (AA 101-200)

2 Images

[Go to Product page](#)

Overview

Quantity:	100 µL
Target:	ANKK1
Binding Specificity:	AA 101-200
Reactivity:	Mouse, Rat
Host:	Rabbit
Clonality:	Polyclonal
Conjugate:	This ANKK1 antibody is un-conjugated
Application:	Western Blotting (WB), ELISA, Immunofluorescence (Cultured Cells) (IF (cc)), Immunofluorescence (Paraffin-embedded Sections) (IF (p)), Immunohistochemistry (Paraffin- embedded Sections) (IHC (p)), Immunohistochemistry (Frozen Sections) (IHC (fro)), Immunocytochemistry (ICC)

Product Details

Immunogen:	KLH conjugated synthetic peptide derived from human ANKK1
Isotype:	IgG
Cross-Reactivity:	Mouse, Rat
Predicted Reactivity:	Human,Dog,Horse,Chicken
Purification:	Purified by Protein A.

Target Details

Target:	ANKK1
---------	-------

Target Details

Alternative Name: ANKK1 ([ANKK1 Products](#))

Background: Synonyms: Ankyrin repeat and kinase domain containing 1, Ankyrin repeat and protein kinase domain containing protein 1, EC 2.7.11.1, PKK2, Protein kinase PKK2, SGK288, Sugen kinase 288, X kinase, ANKK1_HUMAN.

Background: The phosphorylation and dephosphorylation of proteins on serine and threonine residues is an essential means of regulating a broad range of cellular functions in eukaryotes, including cell division, homeostasis and apoptosis. A group of proteins that are intimately involved in this process are the serine/threonine (Ser/Thr) protein kinases. ANKK1 (ankyrin repeat and kinase domain containing 1), also known as PKK2 or SGK288, is a 765 amino acid protein that belongs to the Ser/Thr protein kinase family and contains 12 ANK repeats and one protein kinase domain. Highly expressed in brain tissue and present in lower amounts in placenta and spinal cord, ANKK1 functions to catalyze the ATP-dependent phosphorylation of target proteins and is thought to play a role in alcohol and nicotine dependence. The gene encoding ANKK1 maps to human chromosome 11, which houses over 1,400 genes and comprises nearly 4 % of the human genome.

Gene ID: 255239

Application Details

Application Notes: WB 1:300-5000
ELISA 1:500-1000
IHC-P 1:200-400
IHC-F 1:100-500
IF(IHC-P) 1:50-200
IF(IHC-F) 1:50-200
IF(ICC) 1:50-200
ICC 1:100-500

Restrictions: For Research Use only

Handling

Format: Liquid

Concentration: 1 µg/µL

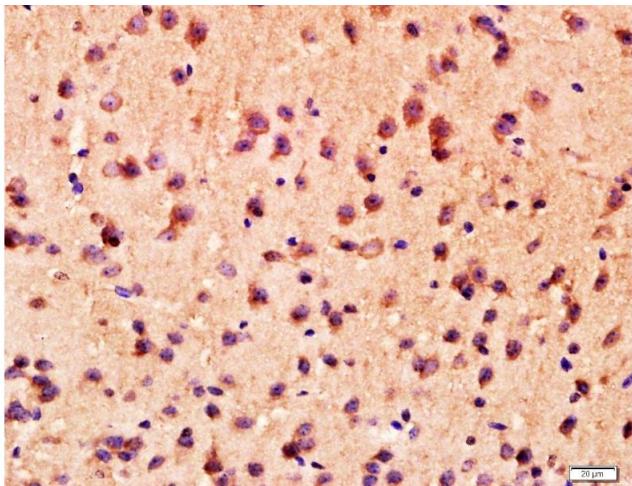
Buffer: 0.01M TBS(pH 7.4) with 1 % BSA, 0.02 % Proclin300 and 50 % Glycerol.

Preservative: ProClin

Handling

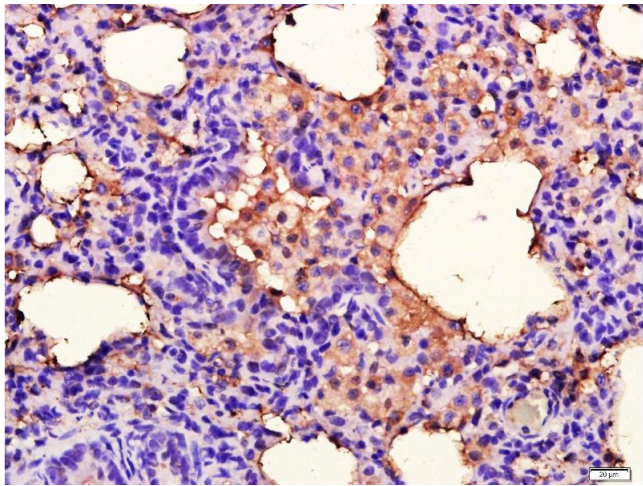
Precaution of Use:	This product contains ProClin: a POISONOUS AND HAZARDOUS SUBSTANCE, which should be handled by trained staff only.
Storage:	4 °C,-20 °C
Storage Comment:	Shipped at 4°C. Store at -20°C for one year. Avoid repeated freeze/thaw cycles.
Expiry Date:	12 months

Images



Immunohistochemistry (Paraffin-embedded Sections)

Image 1. Mouse brain lysates probed with ANKK1 Polyclonal Antibody, unconjugated at 1:400 overnight at 4°C followed by a conjugated secondary antibody for 20 minutes at 37°C.



Immunohistochemistry (Paraffin-embedded Sections)

Image 2. Rat lung lysates probed with ANKK1 Polyclonal Antibody, unconjugated at 1:400 overnight at 4°C followed by a conjugated secondary antibody for 20 minutes at 37°C.