

Datasheet for ABIN1714036

anti-14-3-3 theta antibody (AA 31-130)[Go to Product page](#)**1** Image

Overview

Quantity:	100 µL
Target:	14-3-3 theta (YWHAQ)
Binding Specificity:	AA 31-130
Reactivity:	Human, Mouse, Rat
Host:	Rabbit
Clonality:	Polyclonal
Conjugate:	This 14-3-3 theta antibody is un-conjugated
Application:	Western Blotting (WB), ELISA, Immunohistochemistry (Paraffin-embedded Sections) (IHC (p)), Flow Cytometry (FACS), Immunofluorescence (Cultured Cells) (IF (cc)), Immunofluorescence (Paraffin-embedded Sections) (IF (p)), Immunocytochemistry (ICC), Immunohistochemistry (Frozen Sections) (IHC (fro))

Product Details

Immunogen:	KLH conjugated synthetic peptide derived from human 14-3-3 Tau
Isotype:	IgG
Cross-Reactivity:	Human, Mouse, Rat
Predicted Reactivity:	Dog,Cow,Sheep,Pig
Purification:	Purified by Protein A.

Target Details

Target:	14-3-3 theta (YWHAQ)
---------	----------------------

Target Details

Alternative Name:	14-3-3 Tau (YWHAQ Products)
Background:	<p>Synonyms: 14 3 3 protein T cell, 14 3 3 protein tau, 14 3 3 protein theta, 14 3 3 tau, 14 3 3 theta, 14-3-3 protein T-cell, 14-3-3 protein tau, 14-3-3 protein theta, 1433T_HUMAN, 1C5, HS1, KCIP1, Protein HS1, Protein kinase C inhibitor protein 1, Protein tau, tyr3/trp5 monooxygenase activation protein, theta, Tyrosine 3 monooxygenase/tryptophan 5 monooxygenase activation protein, theta polypeptide, YWHAQ.</p> <p>Background: Adapter protein implicated in the regulation of a large spectrum of both general and specialized signaling pathways. Binds to a large number of partners, usually by recognition of a phosphoserine or phosphothreonine motif. Binding generally results in the modulation of the activity of the binding partner. Negatively regulates the kinase activity of PDPK1. This antibody is reactive with 14-3-3 Alpha/Beta/Gamma/Delta/Epsilon.</p>
Gene ID:	10971
Pathways:	Apoptosis , Myometrial Relaxation and Contraction

Application Details

Application Notes:	WB 1:300-5000 ELISA 1:500-1000 FCM 1:20-100 IHC-P 1:200-400 IHC-F 1:100-500 IF(IHC-P) 1:50-200 IF(IHC-F) 1:50-200 IF(ICC) 1:50-200 ICC 1:100-500
Restrictions:	For Research Use only

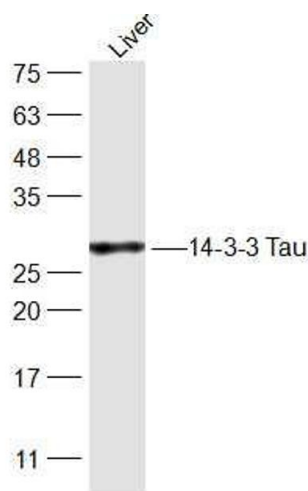
Handling

Format:	Liquid
Concentration:	1 µg/µL
Buffer:	0.01M TBS(pH 7.4) with 1 % BSA, 0.02 % Proclin300 and 50 % Glycerol.
Preservative:	ProClin
Precaution of Use:	This product contains ProClin: a POISONOUS AND HAZARDOUS SUBSTANCE, which should be

Handling

	handled by trained staff only.
Storage:	4 °C,-20 °C
Storage Comment:	Shipped at 4°C. Store at -20°C for one year. Avoid repeated freeze/thaw cycles.
Expiry Date:	12 months

Images



Western Blotting

Image 1. Rat Liver lysates probed with 14-3-3 Tau Polyclonal Antibody, Unconjugated at 1:300 dilution and 4°C overnight incubation. Followed by conjugated secondary antibody incubation at 1:10000 for 60 min at 37°C.