



[Go to Product page](#)

Datasheet for ABIN1714045  
**anti-C7orf64 antibody (AA 1-100)**

2 Images

Overview

Quantity:	100 µL
Target:	C7orf64
Binding Specificity:	AA 1-100
Reactivity:	Human
Host:	Rabbit
Clonality:	Polyclonal
Conjugate:	This C7orf64 antibody is un-conjugated
Application:	Western Blotting (WB), Immunofluorescence (Cultured Cells) (IF (cc)), Immunofluorescence (Paraffin-embedded Sections) (IF (p)), ELISA, Immunohistochemistry (Paraffin-embedded Sections) (IHC (p)), Immunohistochemistry (Frozen Sections) (IHC (fro)), Immunocytochemistry (ICC)

Product Details

Immunogen:	KLH conjugated synthetic peptide derived from human C7orf64
Isotype:	IgG
Cross-Reactivity:	Human
Predicted Reactivity:	Mouse,Rat,Dog,Cow,Sheep,Horse,Chicken,Rabbit
Purification:	Purified by Protein A.

Target Details

Target:	C7orf64
---------	---------

## Target Details

---

Alternative Name: C7orf64 ([C7orf64 Products](#))

---

Background: Synonyms: C7orf64, RBM48\_HUMAN, DKFZP564O0523, DKFZp686D1651, HSPC304, Hypothetical protein LOC84060, OTTHUMP00000215752, UPF0712 protein C7orf64.  
Background: Chromosome 7 has been linked to Osteogenesis imperfecta, Pendred syndrome, Lissencephaly, Citrullinemia and Shwachman-Diamond syndrome. The deletion of a portion of the q arm of chromosome 7 is associated with Williams-Beuren syndrome, a condition characterized by mild mental retardation, an unusual comfort and friendliness with strangers and an elfin appearance. Deletions of portions of the q arm of chromosome 7 are also seen in a number of myeloid disorders including cases of acute myelogenous leukemia and myelodysplasia. The C7orf64 gene product has been provisionally designated C7orf64 pending further characterization.

---

Gene ID: 84060

---

## Application Details

---

Application Notes: WB 1:300-5000  
ELISA 1:500-1000  
IHC-P 1:200-400  
IHC-F 1:100-500  
IF(IHC-P) 1:50-200  
IF(IHC-F) 1:50-200  
IF(ICC) 1:50-200  
ICC 1:100-500

---

Restrictions: For Research Use only

---

## Handling

---

Format: Liquid

---

Concentration: 1 µg/µL

---

Buffer: 0.01M TBS( pH 7.4) with 1 % BSA, 0.02 % Proclin300 and 50 % Glycerol.

---

Preservative: ProClin

---

Precaution of Use: This product contains ProClin: a POISONOUS AND HAZARDOUS SUBSTANCE, which should be handled by trained staff only.

---

Storage: 4 °C, -20 °C

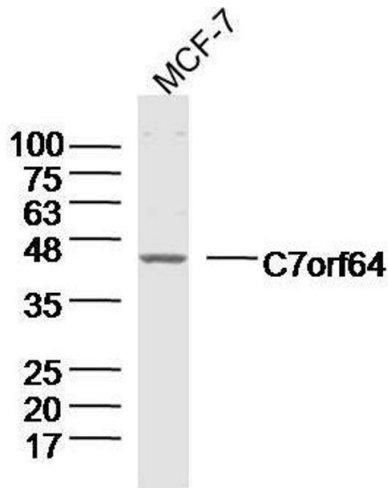
---

## Handling

Storage Comment: Shipped at 4°C. Store at -20°C for one year. Avoid repeated freeze/thaw cycles.

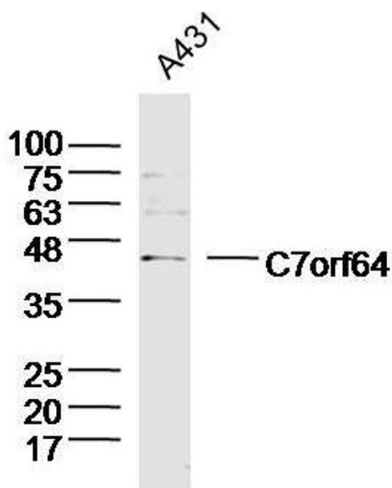
Expiry Date: 12 months

## Images



### Western Blotting

**Image 1.** Lane 1: MCF-7 lysates probed with C7orf64 Polyclonal Antibody, Unconjugated at 1:300 overnight at 4°C. Followed by a conjugated secondary antibody at 1:20000 for 60 min at 37°C.



### Western Blotting

**Image 2.** Lane 1: A431 lysates probed with C7orf64 Polyclonal Antibody, Unconjugated at 1:300 overnight at 4°C. Followed by a conjugated secondary antibody at 1:20000 for 60 min at 37°C.