

Datasheet for ABIN1714070
anti-SCXA antibody (AA 165-200)



[Go to Product page](#)

1 Image

Overview

Quantity:	100 µL
Target:	SCXA
Binding Specificity:	AA 165-200
Reactivity:	Human, Mouse, Rat
Host:	Rabbit
Clonality:	Polyclonal
Conjugate:	This SCXA antibody is un-conjugated
Application:	Western Blotting (WB), Immunohistochemistry (Paraffin-embedded Sections) (IHC (p)), Immunofluorescence (Paraffin-embedded Sections) (IF (p))

Product Details

Immunogen:	KLH conjugated synthetic peptide derived from human SCXA/Scleraxis
Isotype:	IgG
Purification:	Purified by Protein A.

Target Details

Target:	SCXA
Abstract:	SCXA Products
Background:	Plays an early essential role in mesoderm formation, as well as a later role in formation of somite-derived chondrogenic lineages. Subcellular location: Nucleus

Target Details

Synonyms: SCXA, SCXB, bHLHa48, Basic helix-loop-helix transcription factor scleraxis, Class A basic helix-loop-helix protein 41, bHLHa41, Class A basic helix-loop-helix protein 48, SCX

Gene ID: 642658

UniProt: [Q7RTU7](#)

Application Details

Application Notes: WB(1:100-1000), IHC-P(1:100-500), IF(IHC-P)(1:50-200)

Restrictions: For Research Use only

Handling

Format: Liquid

Concentration: 1 µg/µL

Buffer: Aqueous buffered solution containing 100 µg/mL BSA, 50 % glycerol and 0.09 % sodium azide.

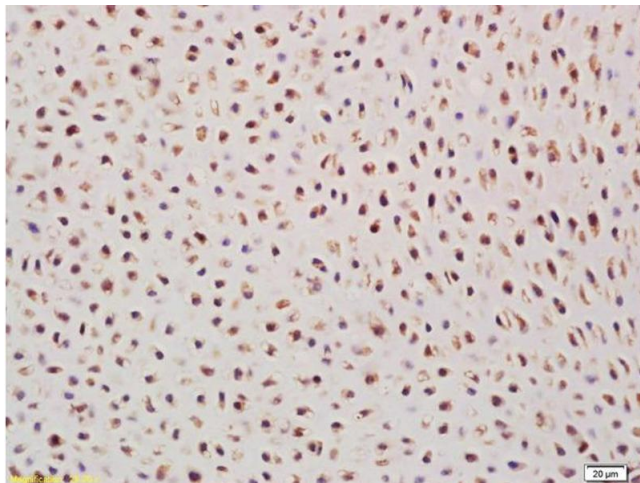
Preservative: Sodium azide

Precaution of Use: This product contains Sodium azide: a POISONOUS AND HAZARDOUS SUBSTANCE which should be handled by trained staff only.

Storage: -20 °C

Storage Comment: Store at -20°C

Expiry Date: 12 months



Immunohistochemistry

Image 1. Formalin-fixed and paraffin embedded mouse embryo labeled with Anti-SCXA/Scleraxis Polyclonal Antibody, Unconjugated (ABIN1714070) at 1:200 followed by conjugation to the secondary antibody and DAB staining