

Datasheet for ABIN1714077

anti-alpha Adducin antibody (pSer436)



[Go to Product page](#)

1 Image

Overview

Quantity:	100 µL
Target:	alpha Adducin (ADD1)
Binding Specificity:	pSer436
Reactivity:	Human, Mouse, Rat
Host:	Rabbit
Clonality:	Polyclonal
Conjugate:	This alpha Adducin antibody is un-conjugated
Application:	Western Blotting (WB), ELISA, Immunohistochemistry (Paraffin-embedded Sections) (IHC (p)), Immunofluorescence (Cultured Cells) (IF (cc)), Immunofluorescence (Paraffin-embedded Sections) (IF (p)), Immunocytochemistry (ICC), Immunohistochemistry (Frozen Sections) (IHC (fro))

Product Details

Immunogen:	KLH conjugated synthetic phosphopeptide derived from human alpha Adducin around the phosphorylation site of Ser436
Isotype:	IgG
Cross-Reactivity:	Human, Mouse, Rat
Predicted Reactivity:	Dog,Cow,Horse,Chicken
Purification:	Purified by Protein A.

Target Details

Target:	alpha Adducin (ADD1)
Alternative Name:	alpha Adducin (ADD1 Products)
Background:	<p>Synonyms: alpha Adducinphospho S436, alpha Adducinphospho Ser436, p-alpha AdducinS436, p-alpha AdducinSer436, ADD 1, ADD A, ADD1, ADD1 protein, ADDA, ADDA_HUMAN, Adducin 1 alpha, Adducin 1 alpha, Alpha adducin, Alpha-adducin, Erythrocyte adducin alpha subunit, Erythrocyte hosphor subunit alpha, Erythrocyte adducin subunit alpha.</p> <p>Background: Adducins are a family of cytoskeleton proteins encoded by three genes (Alpha, Beta, Gamma). Adducin is a protein associated with the inner leaflet of the plasma membrane and is one of the proteins localized at the spectrin-actin junction of the membrane skeleton. The cortical actin cytoskeletal network is lost during apoptosis and Adducins are central in the cortical actin network organization. Adducin Alpha is a cytoskeletal protein involved with sodium-pump activity in the renal tubule and is associated with hypertension. The expression of Adducin Alpha and Adducin Gamma is ubiquitous in contrast to the restricted expression of Adducin Beta. Adducin Beta is expressed at high levels in brain and hematopoietic tissues, such as bone marrow, in humans, and in spleen in mice.</p>
Gene ID:	118
Pathways:	Negative Regulation of Hormone Secretion , Regulation of Actin Filament Polymerization , Regulation of Lipid Metabolism by PPARalpha , ER-Nucleus Signaling

Application Details

Application Notes:	WB 1:300-5000 ELISA 1:500-1000 IHC-P 1:200-400 IHC-F 1:100-500 IF(IHC-P) 1:50-200 IF(IHC-F) 1:50-200 IF(ICC) 1:50-200 ICC 1:100-500
Restrictions:	For Research Use only

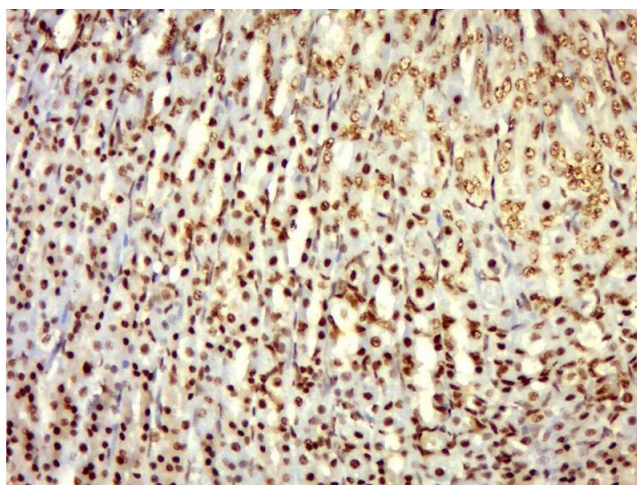
Handling

Format:	Liquid
Concentration:	1 µg/µL

Handling

Buffer:	0.01M TBS(pH 7.4) with 1 % BSA, 0.02 % Proclin300 and 50 % Glycerol.
Preservative:	ProClin
Precaution of Use:	This product contains ProClin: a POISONOUS AND HAZARDOUS SUBSTANCE, which should be handled by trained staff only.
Storage:	4 °C,-20 °C
Storage Comment:	Shipped at 4°C. Store at -20°C for one year. Avoid repeated freeze/thaw cycles.
Expiry Date:	12 months

Images



Immunohistochemistry (Paraffin-embedded Sections)

Image 1. Paraformaldehyde-fixed, paraffin embedded rat stomach, Antigen retrieval by boiling in sodium citrate buffer (pH6.0) for 15min, Block endogenous peroxidase by 3% hydrogen peroxide for 20 minutes, Blocking buffer (normal goat serum) at 37°C for 30min, Antibody incubation with alpha Adducin(Ser436) Polyclonal Antibody, Unconjugated at 1:400 overnight at 4°C, followed by a conjugated secondary for 20 minutes and DAB staining.