

Datasheet for ABIN1714082  
**anti-Cofilin antibody (pSer24)**



[Go to Product page](#)

1 Image

## Overview

Quantity:	100 µL
Target:	Cofilin (CFL1)
Binding Specificity:	pSer24
Reactivity:	Rat
Host:	Rabbit
Clonality:	Polyclonal
Conjugate:	This Cofilin antibody is un-conjugated
Application:	ELISA, Immunohistochemistry (Paraffin-embedded Sections) (IHC (p)), Immunofluorescence (Cultured Cells) (IF (cc)), Immunofluorescence (Paraffin-embedded Sections) (IF (p)), Immunocytochemistry (ICC), Immunohistochemistry (Frozen Sections) (IHC (fro))

## Product Details

Immunogen:	KLH conjugated synthetic phosphopeptide derived from human CFL1/CFL2 around the phosphorylation site of Ser24
Isotype:	IgG
Cross-Reactivity:	Rat
Predicted Reactivity:	Human,Mouse,Dog,Cow,Pig,Chicken,Guinea Pig
Purification:	Purified by Protein A.

## Target Details

Target:	Cofilin (CFL1)
---------	----------------

## Target Details

Alternative Name:	Cofilin ( <a href="#">CFL1 Products</a> )
Background:	<p>Synonyms: Cofilin/CFL1 Ser24, 18 kDa phosphoprotein, CFL 1, CFL, CFL1, Cofilin 1, Cofilin 1 non muscle, Cofilin non muscle isoform, p18, COF1_HUMAN.</p> <p>Background: The protein encoded by this gene can polymerize and depolymerize F-actin and G-actin in a pH -dependent manner. Increased phosphorylation of this protein by LIM kinase aids in Rho-induced reorganization of the actin cytoskeleton. Cofilin is a widely distributed intracellular actin-modulating protein that binds and depolymerizes filamentous F-actin and inhibits the polymerization of monomeric G-actin in a pH -dependent manner. It is involved in the translocation of actin-cofilin complex from cytoplasm to nucleus.</p>
Gene ID:	1072
Pathways:	<a href="#">Regulation of Cell Size</a> , <a href="#">Tube Formation</a> , <a href="#">Protein targeting to Nucleus</a> , <a href="#">CXCR4-mediated Signaling Events</a>

## Application Details

Application Notes:	ELISA 1:500-1000 IHC-P 1:200-400 IHC-F 1:100-500 IF(IHC-P) 1:50-200 IF(IHC-F) 1:50-200 IF(ICC) 1:50-200 ICC 1:100-500
Restrictions:	For Research Use only

## Handling

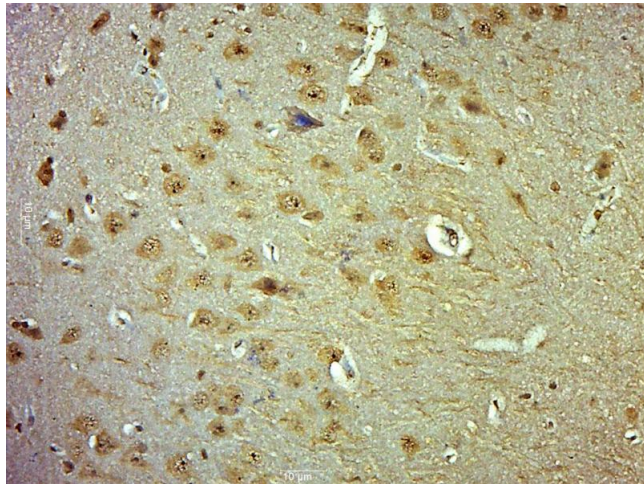
Format:	Liquid
Concentration:	1 µg/µL
Buffer:	0.01M TBS( pH 7.4) with 1 % BSA, 0.02 % Proclin300 and 50 % Glycerol.
Preservative:	ProClin
Precaution of Use:	This product contains ProClin: a POISONOUS AND HAZARDOUS SUBSTANCE, which should be handled by trained staff only.
Storage:	4 °C,-20 °C

## Handling

Storage Comment: Shipped at 4°C. Store at -20°C for one year. Avoid repeated freeze/thaw cycles.

Expiry Date: 12 months

## Images



### Immunohistochemistry (Paraffin-embedded Sections)

**Image 1.** Paraformaldehyde-fixed, paraffin embedded rat brain; Antigen retrieval by boiling in sodium citrate buffer (pH6.0) for 15min; Block endogenous peroxidase by 3% hydrogen peroxide for 20 minutes; Blocking buffer (normal goat serum) at 37°C for 30min; Antibody incubation with Cofilin (Ser24) Polyclonal Antibody, Unconjugated (bs-10252R) at 1:500 overnight at 4°C, followed by a conjugated secondary for 20 minutes and DAB staining.