



[Go to Product page](#)

Datasheet for ABIN1714093
anti-GFPT1 antibody (AA 601-699)

1 Image

Overview

Quantity:	100 µL
Target:	GFPT1
Binding Specificity:	AA 601-699
Reactivity:	Human
Host:	Rabbit
Clonality:	Polyclonal
Conjugate:	This GFPT1 antibody is un-conjugated
Application:	Western Blotting (WB), ELISA, Immunofluorescence (Cultured Cells) (IF (cc)), Immunofluorescence (Paraffin-embedded Sections) (IF (p)), Immunocytochemistry (ICC), Immunohistochemistry (Paraffin-embedded Sections) (IHC (p)), Immunohistochemistry (Frozen Sections) (IHC (fro))

Product Details

Immunogen:	KLH conjugated synthetic peptide derived from human GFPT1
Isotype:	IgG
Cross-Reactivity:	Human
Predicted Reactivity:	Mouse,Rat,Dog,Sheep,Pig,Horse,Chicken,Rabbit
Purification:	Purified by Protein A.

Target Details

Target:	GFPT1
---------	-------

Target Details

Alternative Name: [GFPT1 \(GFPT1 Products\)](#)

Background: Synonyms: GFA, GFAT, GFPT, MSLG, CMS12, GFAT1, CMSTA1, GFAT 1, GFAT1m, GFPT1L, Glutamine--fructose-6-phosphate aminotransferase [isomerizing] 1, D-fructose-6-phosphate amidotransferase 1, Glutamine:fructose-6-phosphate amidotransferase 1, Hexosephosphate aminotransferase 1, GFPT1

Background: Controls the flux of glucose into the hexosamine pathway. Most likely involved in regulating the availability of precursors for N- and O-linked glycosylation of proteins. Regulates the circadian expression of clock genes ARNTL/BMAL1 and CRY1.

Gene ID: 2673

UniProt: [Q06210](#)

Pathways: [ER-Nucleus Signaling, Regulation of Carbohydrate Metabolic Process](#)

Application Details

Application Notes: WB 1:300-5000
ELISA 1:500-1000
IHC-P 1:200-400
IHC-F 1:100-500
IF(IHC-P) 1:50-200
IF(IHC-F) 1:50-200
IF(ICC) 1:50-200
ICC 1:100-500

Restrictions: For Research Use only

Handling

Format: Liquid

Concentration: 1 µg/µL

Buffer: 0.01M TBS(pH 7.4) with 1 % BSA, 0.02 % Proclin300 and 50 % Glycerol.

Preservative: ProClin

Precaution of Use: This product contains ProClin: a POISONOUS AND HAZARDOUS SUBSTANCE, which should be handled by trained staff only.

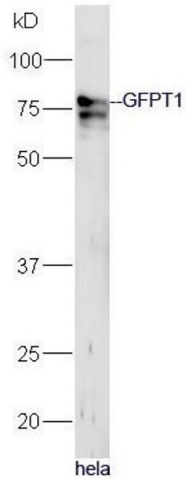
Storage: 4 °C, -20 °C

Handling

Storage Comment: Shipped at 4°C. Store at -20°C for one year. Avoid repeated freeze/thaw cycles.

Expiry Date: 12 months

Images



Western Blotting

Image 1. Human HeLa lysates probed with Rabbit Anti-GFPT1 Polyclonal Antibody, Unconjugated (ABIN1714093) at 1:300 overnight at 4°C. Followed by a conjugated secondary antibody at 1:5000 for 90 min at 37°C.