

Datasheet for ABIN1714103
anti-YWHAB antibody (AA 51-150)

2 Images

[Go to Product page](#)

Overview

Quantity:	100 µL
Target:	YWHAB
Binding Specificity:	AA 51-150
Reactivity:	Human, Mouse, Rat
Host:	Rabbit
Clonality:	Polyclonal
Conjugate:	This YWHAB antibody is un-conjugated
Application:	Western Blotting (WB), ELISA, Immunohistochemistry (Paraffin-embedded Sections) (IHC (p)), Immunofluorescence (Cultured Cells) (IF (cc)), Immunofluorescence (Paraffin-embedded Sections) (IF (p)), Immunocytochemistry (ICC), Immunohistochemistry (Frozen Sections) (IHC (fro))

Product Details

Immunogen:	KLH conjugated synthetic peptide derived from human 14-3-3 beta
Isotype:	IgG
Cross-Reactivity:	Human, Mouse, Rat
Predicted Reactivity:	Dog,Cow,Pig,Horse,Chicken
Purification:	Purified by Protein A.

Target Details

Target:	YWHAB
---------	-------

Target Details

Abstract:	YWHAB Products
Background:	<p>Synonyms: 14 3 3 protein beta/alpha, 14-3-3 protein beta/alpha, 1433B_HUMAN, Brain protein 14 3 3 beta isoform, GW 128, GW128, HS 1, HS1, KCIP 1, KCIP-1, KCIP1, N-terminally processed, Protein 1054, Protein kinase C inhibitor protein 1, Tyrosine 3 Monooxygenase/Tryptophan 5 Monooxygenase Activation Protein Beta Polypeptide, YWHAA, YWHAB.</p> <p>Background: 14-3-3 are activates tyrosine and tryptophan hydroxylases in the presence of Ca (2+)/calmodulin-dependent protein kinase II, and strongly activates protein kinase C. Is probably a multifunctional regulator of the cell signaling processes mediated by both kinases. Activates the ADP-ribosyltransferase (exoS) activity of bacterial origin. 14-3-3 proteins are localized in neurons, and are axonally transported to the nerve terminals. They may be also present, at lower levels, in various other eukaryotic tissues. It belongs to the 14-3-3 family. This antibody is reactive with 14-3-3 Alpha/Beta/Gamma/Delta/Epsilon.</p>
Gene ID:	7529
Pathways:	Fc-epsilon Receptor Signaling Pathway , EGFR Signaling Pathway , Neurotrophin Signaling Pathway , Myometrial Relaxation and Contraction , Maintenance of Protein Location

Application Details

Application Notes:	WB 1:300-5000 ELISA 1:500-1000 IHC-P 1:200-400 IHC-F 1:100-500 IF(IHC-P) 1:50-200 IF(IHC-F) 1:50-200 IF(ICC) 1:50-200 ICC 1:100-500
Restrictions:	For Research Use only

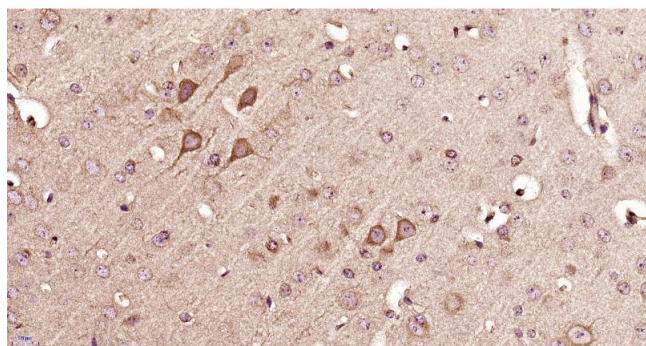
Handling

Format:	Liquid
Concentration:	1 µg/µL
Buffer:	0.01M TBS(pH 7.4) with 1 % BSA, 0.02 % Proclin300 and 50 % Glycerol.

Handling

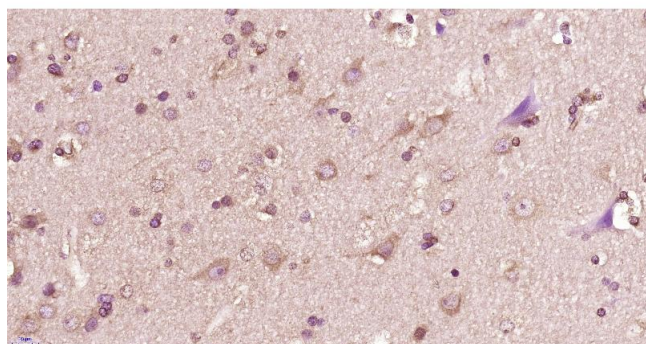
Preservative:	ProClin
Precaution of Use:	This product contains ProClin: a POISONOUS AND HAZARDOUS SUBSTANCE, which should be handled by trained staff only.
Storage:	4 °C,-20 °C
Storage Comment:	Shipped at 4°C. Store at -20°C for one year. Avoid repeated freeze/thaw cycles.
Expiry Date:	12 months

Images



Immunohistochemistry (Paraffin-embedded Sections)

Image 1. Paraformaldehyde-fixed, paraffin embedded mouse brain, Antigen retrieval by boiling in sodium citrate buffer (pH6) for 15min, Block endogenous peroxidase by 3% hydrogen peroxide for 30 minutes, Blocking buffer (normal goat serum) at 37°C for 20min, Antibody incubation with 14-3-3 beta Polyclonal Antibody, Unconjugated at 1:400 overnight at 4°C, followed by a conjugated secondary and DAB staining.



Immunohistochemistry (Paraffin-embedded Sections)

Image 2. Paraformaldehyde-fixed, paraffin embedded human glioma, Antigen retrieval by boiling in sodium citrate buffer (pH6) for 15min, Block endogenous peroxidase by 3% hydrogen peroxide for 30 minutes, Blocking buffer (normal goat serum) at 37°C for 20min, Antibody incubation with 14-3-3 beta Polyclonal Antibody, Unconjugated at 1:400 overnight at 4°C, followed by a conjugated secondary and DAB staining.