



[Go to Product page](#)

Datasheet for ABIN1714110

## anti-ASCL2 antibody

### 1 Image

#### Overview

Quantity:	100 µL
Target:	ASCL2
Reactivity:	Human, Mouse, Rat
Host:	Rabbit
Clonality:	Polyclonal
Conjugate:	This ASCL2 antibody is un-conjugated
Application:	Immunofluorescence (Paraffin-embedded Sections) (IF (p)), Immunohistochemistry (Paraffin-embedded Sections) (IHC (p))

#### Product Details

Immunogen:	KLH conjugated synthetic peptide derived from human ASCL2
Isotype:	IgG
Cross-Reactivity:	Human, Mouse, Rat
Purification:	Purified by Protein A.

#### Target Details

Target:	ASCL2
Alternative Name:	Ascl2 ( <a href="#">ASCL2 Products</a> )
Background:	Synonyms: ASH2, HASH2, MASH2, bHLHa45, Achaete-scute homolog 2, ASH-2, Class A basic helix-loop-helix protein 45, ASCL2 Background: AS-C proteins are involved in the determination of the neuronal precursors in the

## Target Details

---

peripheral nervous system and the central nervous system.

Gene ID: 430

UniProt: [Q99929](#)

Pathways: [Stem Cell Maintenance](#)

## Application Details

---

Application Notes: WB 1:100-1000  
IHC-P 1:100-500  
IF(IHC-P) 1:50-200

Restrictions: For Research Use only

## Handling

---

Format: Liquid

Concentration: 1 µg/µL

Buffer: Aqueous buffered solution containing 1 % BSA, 50 % glycerol and 0.09 % sodium azide.

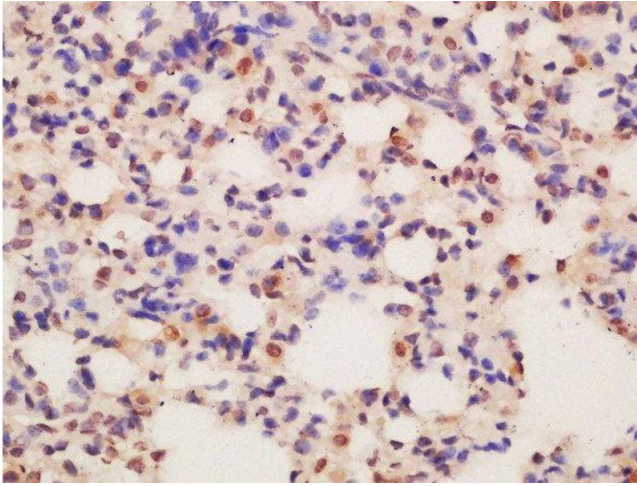
Preservative: Sodium azide

Precaution of Use: This product contains Sodium azide: a POISONOUS AND HAZARDOUS SUBSTANCE, which should be handled by trained staff only.

Storage: -20 °C

Storage Comment: Store at -20°C for 12 months.

Expiry Date: 12 months



#### Immunohistochemistry (Paraffin-embedded Sections)

**Image 1.** Formalin-fixed and paraffin embedded mouse lung labeled with Rabbit Anti-ASCL2 Polyclonal Antibody, Unconjugated at 1:200 followed by conjugation to the secondary antibody and DAB staining