

Datasheet for ABIN1714172  
**anti-FZR1 antibody (AA 141-240)**

## 3 Images

[Go to Product page](#)

## Overview

Quantity:	100 µL
Target:	FZR1
Binding Specificity:	AA 141-240
Reactivity:	Human, Mouse
Host:	Rabbit
Clonality:	Polyclonal
Conjugate:	This FZR1 antibody is un-conjugated
Application:	Western Blotting (WB), ELISA, Immunofluorescence (Cultured Cells) (IF (cc)), Immunofluorescence (Paraffin-embedded Sections) (IF (p)), Immunohistochemistry (Paraffin-embedded Sections) (IHC (p)), Immunocytochemistry (ICC), Immunohistochemistry (Frozen Sections) (IHC (fro))

## Product Details

Immunogen:	KLH conjugated synthetic peptide derived from human FZR1/CDC20C
Isotype:	IgG
Cross-Reactivity:	Human, Mouse
Predicted Reactivity:	Rat,Dog,Cow,Sheep,Pig,Horse,Chicken
Purification:	Purified by Protein A.

## Target Details

Target:	FZR1
---------	------

## Target Details

Alternative Name:	FZR1/CDC20C ( <a href="#">FZR1 Products</a> )
Background:	<p>Synonyms: FZR, FZR2, CDC20C, Fizzy-related protein homolog, CDC20-like protein 1, Cdh1/Hct1 homolog, FZR1, FYR, KIAA1242</p> <p>Background: Key regulator of ligase activity of the anaphase promoting complex/cyclosome (APC/C), which confers substrate specificity upon the complex. Associates with the APC/C in late mitosis, in replacement of CDC20, and activates the APC/C during anaphase and telophase. The APC/C remains active in degrading substrates to ensure that positive regulators of the cell cycle do not accumulate prematurely. At the G1/S transition FZR1 is phosphorylated, leading to its dissociation from the APC/C. Following DNA damage, it is required for the G2 DNA damage checkpoint: its dephosphorylation and reassociation with the APC/C leads to the ubiquitination of PLK1, preventing entry into mitosis.</p>
Gene ID:	51343
UniProt:	<a href="#">Q9UM11</a>
Pathways:	<a href="#">DNA Replication</a> , <a href="#">Synthesis of DNA</a>

## Application Details

Application Notes:	WB 1:300-5000 ELISA 1:500-1000 IHC-P 1:200-400 IHC-F 1:100-500 IF(IHC-P) 1:50-200 IF(IHC-F) 1:50-200 IF(ICC) 1:50-200 ICC 1:100-500
Restrictions:	For Research Use only

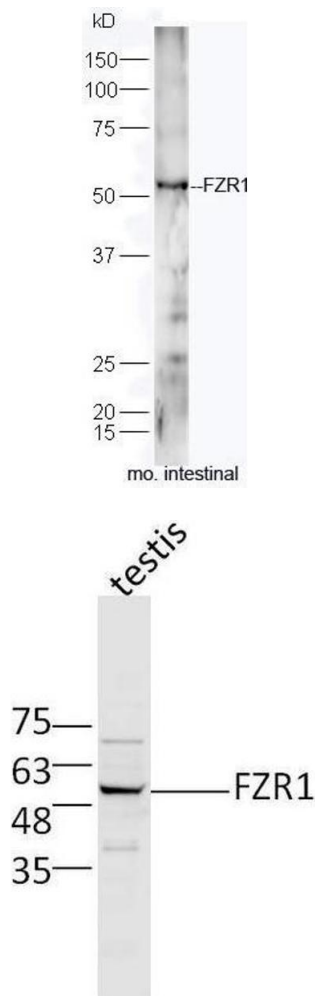
## Handling

Format:	Liquid
Concentration:	1 µg/µL
Buffer:	0.01M TBS( pH 7.4) with 1 % BSA, 0.02 % Proclin300 and 50 % Glycerol.
Preservative:	ProClin
Precaution of Use:	This product contains ProClin: a POISONOUS AND HAZARDOUS SUBSTANCE, which should be

Handling

	handled by trained staff only.
Storage:	4 °C,-20 °C
Storage Comment:	Shipped at 4°C. Store at -20°C for one year. Avoid repeated freeze/thaw cycles.
Expiry Date:	12 months

Images

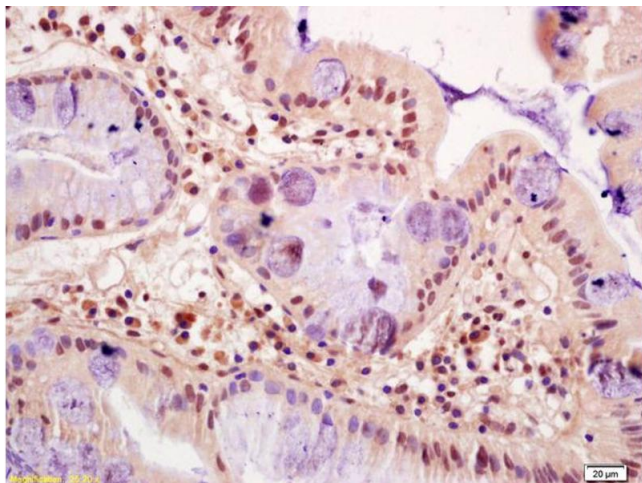


Western Blotting

**Image 1.** Mouse intestine lysates probed with Rabbit Anti-FZR1/CDC20C Polyclonal Antibody, Unconjugated at 1:5000 for 90 min at 37°C.

Western Blotting

**Image 2.** Mouse testis lysates probed with Rabbit Anti-FZR1/CDC20C Polyclonal Antibody, Unconjugated at 1:500 for 90 min at 37°C.



#### Immunohistochemistry

**Image 3.** Formalin-fixed and paraffin embedded human gastric cancer labeled with Anti-FZR1/CDC20C Polyclonal Antibody, Unconjugated (ABIN1714172) at 1:200 followed by conjugation to the secondary antibody and DAB staining