

Datasheet for ABIN1714235
anti-Supervillin antibody (AA 51-150)

1 Image

[Go to Product page](#)

Overview

Quantity:	100 µL
Target:	Supervillin (SVIL)
Binding Specificity:	AA 51-150
Reactivity:	Mouse
Host:	Rabbit
Clonality:	Polyclonal
Conjugate:	This Supervillin antibody is un-conjugated
Application:	Western Blotting (WB), Immunocytochemistry (ICC), Immunofluorescence (Cultured Cells) (IF (cc)), Immunofluorescence (Paraffin-embedded Sections) (IF (p)), ELISA, Immunohistochemistry (Frozen Sections) (IHC (fro)), Immunohistochemistry (Paraffin-embedded Sections) (IHC (p))

Product Details

Immunogen:	KLH conjugated synthetic peptide derived from human Supervillin
Isotype:	IgG
Cross-Reactivity:	Mouse
Predicted Reactivity:	Human,Rat,Dog,Cow,Sheep,Pig,Horse,Chicken
Purification:	Purified by Protein A.

Target Details

Target:	Supervillin (SVIL)
---------	--------------------

Target Details

Alternative Name:	Supervillin (SVIL Products)
Background:	<p>Synonyms: Supervillin, Archvillin, p205/p250, SVIL</p> <p>Background: Forms a high-affinity link between the actin cytoskeleton and the membrane.</p> <p>Isoform 1 (archvillin) is among the first costameric proteins to assemble during myogenesis and it contributes to myogenic membrane structure and differentiation. Appears to be involved in myosin II assembly. May modulate myosin II regulation through MLCK during cell spreading, an initial step in cell migration. May play a role in invadopodial function. Isoform 2 may be involved in modulation of focal adhesions. Supervillin-mediated down-regulation of focal adhesions involves binding to TRIP6. Plays a role in cytokinesis through KIF14 interaction (By similarity).</p>
Gene ID:	6840
UniProt:	O95425

Application Details

Application Notes:	<p>WB 1:300-5000</p> <p>ELISA 1:500-1000</p> <p>IHC-P 1:200-400</p> <p>IHC-F 1:100-500</p> <p>IF(IHC-P) 1:50-200</p> <p>IF(IHC-F) 1:50-200</p> <p>IF(ICC) 1:50-200</p> <p>ICC 1:100-500</p>
Restrictions:	For Research Use only

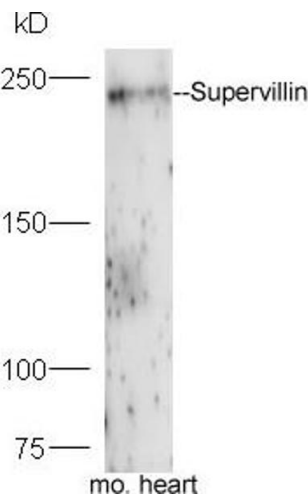
Handling

Format:	Liquid
Concentration:	1 µg/µL
Buffer:	0.01M TBS(pH 7.4) with 1 % BSA, 0.02 % Proclin300 and 50 % Glycerol.
Preservative:	ProClin
Precaution of Use:	This product contains ProClin: a POISONOUS AND HAZARDOUS SUBSTANCE, which should be handled by trained staff only.
Storage:	4 °C,-20 °C

Handling

Storage Comment:	Shipped at 4°C. Store at -20°C for one year. Avoid repeated freeze/thaw cycles.
Expiry Date:	12 months

Images



Western Blotting

Image 1. Mouse heart lysates probed with Rabbit Anti-Supervillin Polyclonal Antibody, Unconjugated (ABIN1714235) at 1:300 overnight at 4 °C. Followed by a conjugated secondary antibody at 1:5000 for 90 min at 37 °C.