

Datasheet for ABIN1714263
anti-MAP1LC3A antibody (AA 27-59)[2 Images](#)[2 Publications](#)[Go to Product page](#)

Overview

Quantity:	100 µL
Target:	MAP1LC3A
Binding Specificity:	AA 27-59
Reactivity:	Human, Mouse, Rat
Host:	Rabbit
Clonality:	Polyclonal
Conjugate:	This MAP1LC3A antibody is un-conjugated
Application:	Western Blotting (WB), Immunohistochemistry (Paraffin-embedded Sections) (IHC (p)), Immunofluorescence (Cultured Cells) (IF (cc)), Immunofluorescence (Paraffin-embedded Sections) (IF (p))

Product Details

Immunogen:	KLH conjugated synthetic peptide derived from human LC3
Isotype:	IgG
Cross-Reactivity:	Human, Mouse, Rat
Purification:	Purified by Protein A.

Target Details

Target:	MAP1LC3A
Alternative Name:	LC3 (MAP1LC3A Products)

Target Details

Background:	<p>Synonyms: LC3A: Microtubule-associated proteins 1A/1B light chain 3A, Autophagy-related protein LC3 A, Autophagy-related ubiquitin-like modifier LC3 A, MAP1 light chain 3-like protein 1, MAP1A/MAP1B light chain 3 A, MAP1A/MAP1B LC3 A, Microtubule-associated protein 1 light chain 3 alpha Microtubule-associated proteins 1A/1B light chain 3B LC3B: Autophagy-related protein LC3 B, Autophagy-related ubiquitin-like modifier LC3 B, MAP1 light chain 3-like protein 2, MAP1A/MAP1B light chain 3 B, MAP1A/MAP1B LC3 B, Microtubule-associated protein 1 light chain 3 beta</p> <p>Background: Ubiquitin-like modifier involved in formation of autophagosomal vacuoles (autophagosomes). Plays a role in mitophagy which contributes to regulate mitochondrial quantity and quality by eliminating the mitochondria to a basal level to fulfill cellular energy requirements and preventing excess ROS production. Whereas LC3s are involved in elongation of the phagophore membrane, the GABARAP/GATE-16 subfamily is essential for a later stage in autophagosome maturation. Promotes primary ciliogenesis by removing OFD1 from centriolar satellites via the autophagic pathway.</p>
Gene ID:	84557, 81631
UniProt:	Q9H492 , Q9GZQ8
Pathways:	Autophagy

Application Details

Application Notes:	WB 1:300-5000 IHC-P 1:200-400 IF(IHC-P) 1:50-200 IF(ICC) 1:50-200
Restrictions:	For Research Use only

Handling

Format:	Liquid
Concentration:	1 µg/µL
Buffer:	0.01M TBS(pH 7.4) with 1 % BSA, 0.02 % Proclin300 and 50 % Glycerol.
Preservative:	ProClin
Precaution of Use:	This product contains ProClin: a POISONOUS AND HAZARDOUS SUBSTANCE, which should be handled by trained staff only.

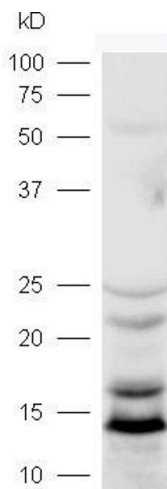
Handling

Storage:	4 °C,-20 °C
Storage Comment:	Shipped at 4°C. Store at -20°C for one year. Avoid repeated freeze/thaw cycles.
Expiry Date:	12 months

Publications

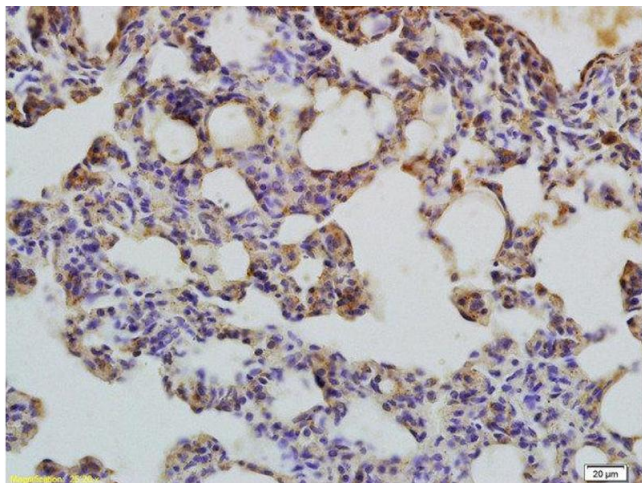
Product cited in:	<p>Li, Sharma, Yin, Tan, Xiao: "Metformin ameliorates hepatic steatosis and improves the induction of autophagy in HFD-induced obese mice." in: Molecular medicine reports, Vol. 16, Issue 1, pp. 680-686, (2017) (PubMed).</p> <p>Chen, Wei, Nie, Lin, Tian, Liu, Yu, Cheng, Yan, Wang, Liu, Deng, Lai, Zhou, Zhang, Lin, Chen: "β-Asarone prevents autophagy and synaptic loss by reducing ROCK expression in asenescence-accelerated prone 8 mice." in: Brain research, Vol. 1552, pp. 41-54, (2014) (PubMed).</p>
-------------------	---

Images



Western Blotting

Image 1. Lane 1: mouse brain lysates probed with Rabbit Anti-LC3 Polyclonal Antibody, Unconjugated (ABIN1714263) at 1:300 overnight at 4 °C. Followed by conjugation to secondary antibody at 1:5000 for 90 min at 37 °C.



Immunohistochemistry (Paraffin-embedded Sections)

Image 2. Formalin-fixed and paraffin embedded rat brain labeled with Rabbit Anti-LC3 Polyclonal Antibody, Unconjugated and DAB staining.