

Datasheet for ABIN1714264

## anti-Integrin beta 2 antibody (pThr758)



[Go to Product page](#)

### 2 Images

#### Overview

Quantity:	100 µL
Target:	Integrin beta 2 (ITGB2)
Binding Specificity:	pThr758
Reactivity:	Human
Host:	Rabbit
Clonality:	Polyclonal
Conjugate:	This Integrin beta 2 antibody is un-conjugated
Application:	Flow Cytometry (FACS), ELISA, Immunohistochemistry (Frozen Sections) (IHC (fro)), Immunohistochemistry (Paraffin-embedded Sections) (IHC (p)), Immunocytochemistry (ICC), Immunofluorescence (Cultured Cells) (IF (cc)), Immunofluorescence (Paraffin-embedded Sections) (IF (p))

#### Product Details

Immunogen:	KLH conjugated synstic phosphopeptide derived from human CD18 around the phosphorylation site of Thr758
Isotype:	IgG
Cross-Reactivity:	Human
Predicted Reactivity:	Mouse,Rat,Dog,Cow,Sheep,Pig,Horse,Chicken,Rabbit,Guinea Pig
Purification:	Purified by Protein A.

## Target Details

Target:	Integrin beta 2 (ITGB2)
Alternative Name:	CD18 ( <a href="#">ITGB2 Products</a> )
Background:	<p>Synonyms: LAD, CD18, MF17, MFI7, LCAMB, LFA-1, MAC-1, Integrin beta-2, Cell surface adhesion glycoproteins LFA-1/CR3/p150,95 subunit beta, Complement receptor C3 subunit beta, ITGB2</p> <p>Background: Integrin alpha-L/beta-2 is a receptor for ICAM1, ICAM2, ICAM3 and ICAM4. Integrins alpha-M/beta-2 and alpha-X/beta-2 are receptors for the iC3b fragment of the third complement component and for fibrinogen. Integrin alpha-X/beta-2 recognizes the sequence G-P-R in fibrinogen alpha-chain. Integrin alpha-M/beta-2 recognizes P1 and P2 peptides of fibrinogen gamma chain. Integrin alpha-M/beta-2 is also a receptor for factor X. Integrin alpha-D/beta-2 is a receptor for ICAM3 and VCAM1. Triggers neutrophil transmigration during lung injury through PTK2B/PYK2-mediated activation.</p>
Gene ID:	3689
UniProt:	<a href="#">P05107</a>
Pathways:	<a href="#">NF-kappaB Signaling</a> , <a href="#">Activation of Innate immune Response</a> , <a href="#">Toll-Like Receptors Cascades</a> , <a href="#">Activated T Cell Proliferation</a>

## Application Details

Application Notes:	ELISA 1:500-1000 FCM 1:20-100 IHC-P 1:200-400 IHC-F 1:100-500 IF(IHC-P) 1:50-200 IF(IHC-F) 1:50-200 IF(ICC) 1:50-200 ICC 1:100-500
Restrictions:	For Research Use only

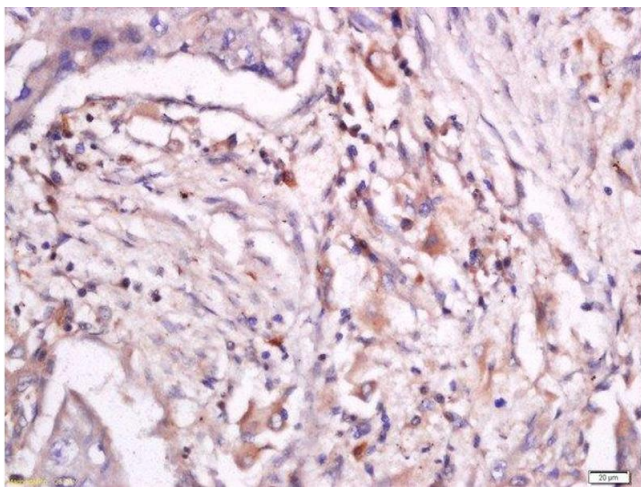
## Handling

Format:	Liquid
Concentration:	1 µg/µL
Buffer:	0.01M TBS( pH 7.4) with 1 % BSA, 0.02 % Proclin300 and 50 % Glycerol.

## Handling

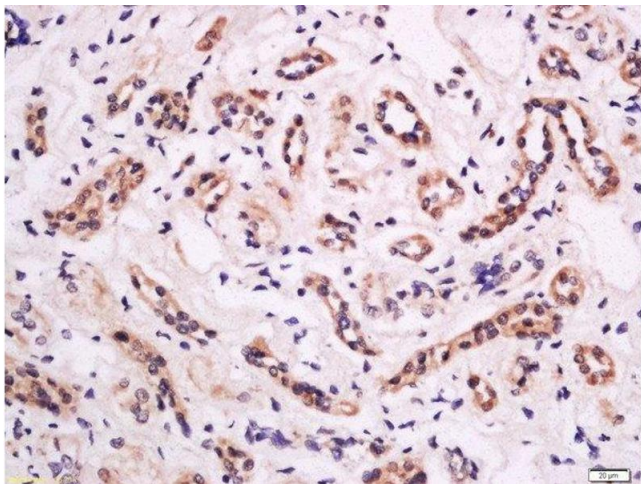
Preservative:	ProClin
Precaution of Use:	This product contains ProClin: a POISONOUS AND HAZARDOUS SUBSTANCE, which should be handled by trained staff only.
Storage:	4 °C,-20 °C
Storage Comment:	Shipped at 4°C. Store at -20°C for one year. Avoid repeated freeze/thaw cycles.
Expiry Date:	12 months

## Images



### Immunohistochemistry (Paraffin-embedded Sections)

**Image 1.** Formalin-fixed and paraffin embedded human lung carcinoma labeled with Anti-CD18 (Thr758) Polyclonal Antibody, Unconjugated at 1:200 followed by conjugation to the secondary antibody and DAB staining.



### Immunohistochemistry (Paraffin-embedded Sections)

**Image 2.** Formalin-fixed and paraffin embedded human kidney tissue labeled with Anti-CD18 (Thr758) Polyclonal Antibody, Unconjugated at 1:200 followed by conjugation to the secondary antibody and DAB staining.