

Datasheet for ABIN1714279
anti-CAPRIN2 antibody (AA 101-200)[Go to Product page](#)

1 Image

Overview

Quantity:	100 µL
Target:	CAPRIN2
Binding Specificity:	AA 101-200
Reactivity:	Human, Mouse, Rat
Host:	Rabbit
Clonality:	Polyclonal
Conjugate:	This CAPRIN2 antibody is un-conjugated
Application:	Western Blotting (WB), ELISA, Immunofluorescence (Cultured Cells) (IF (cc)), Immunofluorescence (Paraffin-embedded Sections) (IF (p)), Immunohistochemistry (Paraffin-embedded Sections) (IHC (p)), Immunohistochemistry (Frozen Sections) (IHC (fro)), Immunocytochemistry (ICC)

Product Details

Immunogen:	KLH conjugated synthetic peptide derived from human CAPRIN2
Isotype:	IgG
Cross-Reactivity:	Human, Mouse, Rat
Predicted Reactivity:	Sheep,Pig,Horse,Chicken
Purification:	Purified by Protein A.

Target Details

Target:	CAPRIN2
---------	---------

Target Details

Alternative Name:	CAPRIN2 (CAPRIN2 Products)
Background:	<p>Synonyms: C1q domain-containing protein 1, C1QDC1, CAPR2_HUMAN, Caprin family member 2, Caprin-2, caprin2, Cytoplasmic activation/proliferation-associated protein 2, EEG 1, EEG1, Gastric cancer multidrug resistance-associated protein, KIAA1873, Protein EEG-1, RNA granule protein 140, RNG140.</p> <p>Background: Caprin2 is 1127 amino acid highly conserved protein that is ubiquitously expressed with highest levels of expression in brain and spleen. Caprin2 stabilizes cytosolic β-catenin and enhances LEF-1 dependent reporter gene activity as well as the expression of Wnt target genes in mammalian cells. Caprin2 promotes LRP5/6 phosphorylation by GSK-3 and enhances the interaction between Axin and LRP5/6. It is suggested that Caprin2 functions as a proapoptotic inhibitor of the cell cycle. Nine isoforms of Caprin2 exist due to alternative splicing events.</p>
Gene ID:	65981
UniProt:	Q6IMN6

Application Details

Application Notes:	WB 1:300-5000 ELISA 1:500-1000 IHC-P 1:200-400 IHC-F 1:100-500 IF(IHC-P) 1:50-200 IF(IHC-F) 1:50-200 IF(ICC) 1:50-200 ICC 1:100-500
Restrictions:	For Research Use only

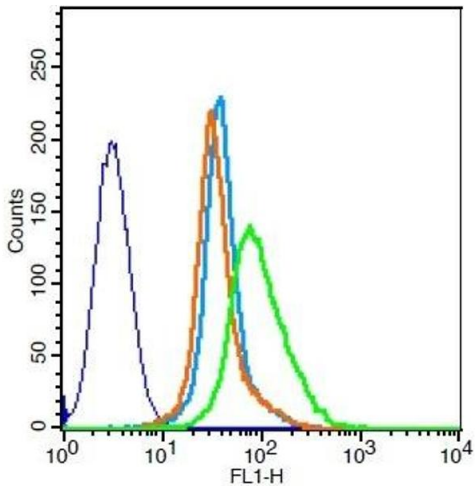
Handling

Format:	Liquid
Concentration:	1 μ g/ μ L
Buffer:	0.01M TBS(pH 7.4) with 1 % BSA, 0.02 % Proclin300 and 50 % Glycerol.
Preservative:	ProClin
Precaution of Use:	This product contains ProClin: a POISONOUS AND HAZARDOUS SUBSTANCE, which should be

Handling

	handled by trained staff only.
Storage:	4 °C,-20 °C
Storage Comment:	Shipped at 4°C. Store at -20°C for one year. Avoid repeated freeze/thaw cycles.
Expiry Date:	12 months

Images



Flow Cytometry

Image 1. Mouse splenocytes probed with CAPRIN2 Polyclonal Antibody at 1:100 for 30 minutes followed by incubation with a conjugated secondary -FITC) (green) for 30 minutes compared to control cells (blue), secondary only (light blue) and isotype control (orange).